



Artisan Technology Group is your source for quality new and certified-used/pre-owned equipment

- FAST SHIPPING AND DELIVERY
- TENS OF THOUSANDS OF IN-STOCK ITEMS
- EQUIPMENT DEMOS
- HUNDREDS OF MANUFACTURERS SUPPORTED
- LEASING/MONTHLY RENTALS
- ITAR CERTIFIED SECURE ASSET SOLUTIONS

SERVICE CENTER REPAIRS

Experienced engineers and technicians on staff at our full-service, in-house repair center

*InstraView*SM REMOTE INSPECTION

Remotely inspect equipment before purchasing with our interactive website at www.instraview.com ↗

WE BUY USED EQUIPMENT

Sell your excess, underutilized, and idle used equipment. We also offer credit for buy-backs and trade-ins. www.artisanng.com/WeBuyEquipment ↗

LOOKING FOR MORE INFORMATION?

Visit us on the web at www.artisanng.com ↗ for more information on price quotations, drivers, technical specifications, manuals, and documentation

Contact us: (888) 88-SOURCE | sales@artisanng.com | www.artisanng.com

Network-Ready Vision System Series

F210ETN / F500ETN

Ultimate Power - High Resolution (F500) Network-Ready Vision System

- Two digital camera ports, high resolution (1K x 1K) with F500ETN
- Advanced real time data logging and storage functions
- 10/100 Base TX Ethernet Port, USB, RS232/422, 33 digital I/O
- Optional VisionComposerNET for remote configuration/maintenance
- Security tools, audit trail creation in security sensitive environment



Ordering information

Name		Model	Remarks
Controller	Standard Resolution	F210-C10-ETN	NPN Input / Output
		F210-C15-ETN	PNP Input / Output
	High Resolution	F500-C10-ETN	NPN Input / Output
		F500-C15-ETN	PNP Input / Output
Camera	250 K Pixel	F210-S1	For F210ETN only
	1 M Pixel	F500-S1	For F500ETN only
Monitor		F150-M05L	5.5" color TFT LCD
		F500-M10L	10.4" color TFT LCD
Console		F150-KP	Standard Console
		F-160-KP	Console with additional function keys
Memory Cards		F160-N64S(S)	Memory capacity 64 MB
		F160-N256S	Memory capacity 256 MB
PC-Software		F500-CD3E	Optional remote configuration software (via ETN)
Application Software		F500-UM3ME	With macro function
		F500-UM3FE	Without macro function
High precision Lenses		F500-LE16	focal length 16 mm
		F500-LE25	focal length 25 mm
		F500-LE50	focal length 50 mm
Camera cable		F500-VS2	Available length 2 m, 5 m, 10 m
Monitor cable		F500-VM	Cable length 2 m
Parallel cable		F160-VP	Loose-wire cable for parallel I/O connectors. Cable length 2 m

Specifications

Controller

Model	F210-C10-ETN / F210-C15-ETN	F500-C10-ETN / F500-C15-ETN
Connected Camera	F210-S1	F500-S1
No. of connectable Cameras	2	2
Processing resolution	512x484 (HxV)	1024x1024 (HxV)
No. of scenes	32 (Can be increased using Memory Cards.)	32 (Can be increased using Memory Cards.)
Image memory function	35 images max.	35 images max.
Storage	64 MB non-volatile memory	256 MB non-volatile memory
Operation and settings	Measurement items installed using Applications Software. Menu operations used to combine measurement items. Vision Composer Net can be used for operation and settings.	Measurement items installed using Applications Software. Menu operations used to combine measurement items. Vision Composer Net can be used for operation and settings.
Menu language	Japanese or English (switchable)	Japanese or English (switchable)
Serial communications	USB series B: 1 channel RS-232C/422: 1 channel	USB series B: 1 channel RS-232C/422: 1 channel
Network communications	Ethernet 100Base-TX/10Base-T	Ethernet 100Base-TX/10Base-T
Parallel I/O	11 inputs, 22 outputs	11 inputs, 22 outputs
Monitor interface	Composite video output: 1 channel, S-VIDEO output: 1 channel	Composite video output: 1 channel, S-VIDEO output: 1 channel
Memory Card interface	Compact Flash card slot, 1 channel	Compact Flash card slot, 1 channel
Power supply voltage	20.4 to 26.4 VDC	20.4 to 26.4 VDC
Current consumption	2.1 A max. (with two F210-S1 Cameras connected)	2.1 A max. (with two F500-S1 Cameras connected)
Ambient temperature	Operating: 0 to +50 °C Storage: -25 to +65 °C with no icing or condensation	Operating: 0 to +50 °C Storage: -25 to +65 °C with no icing or condensation
Ambient humidity	Operating/storage: 35% to 85% with no condensation	Operating/storage: 35% to 85% with no condensation
Dimensions	100x198x134 mm (WxHxD) (without connectors and other protrusions)	100x198x134 mm (WxHxD) (without connectors and other protrusions)
Weight	Approx. 1.6 kg (Controller only)	Approx. 1.6 kg (Controller only)
Accessories	Ferrite core for Console (1) Setup Manual	Ferrite core for Console (1) Setup Manual

Digital Interface Cameras

Model	F210-S1	F500-S1
Imaging device	1/3-inch CCD	2/3-inch CCD
Pixel size	7.4x7.4 μm (HxW)	6.45x6.45μm (HxW)
Shutter	Electronic shutter, 8 shutter speeds (1/60 to 1/12,000 s), changed via menu	Electronic shutter, 10 shutter speeds (1/24 to 1/10,000 s), changed via menu
Partial function	Seven settings	Four settings
Communications interface	Conforms to Camera Link	Conforms to Camera Link
Ambient temperature	Operating: 0 to +50 °C Storage: -25 to +60 °C with no icing or condensation	Operating: 0 to +50 °C Storage: -25 to +60 °C with no icing or condensation
Ambient humidity	Operating/storage: 35% to 85% with no condensation	Operating /storage: 35% to 85% with no condensation
Dimensions	43x43x49 mm (WxHxD) (without connectors and other protrusions)	50x40x90 mm (WxHxD) (without connectors and other protrusions)
Weight	Approx. 110 g	Approx. 270 g
Accessories	Instruction Manual	Instruction Manual

Monitor

Model	F500-M10L
Size in inches	10.4 inches
Type	LCD TFT
Resolution	640 x 480
Brightness	350 cdm/m (typical)
Input signal	NTSC composite video (1.0 V / 75 Ω termination), S-VIDEO
Power supply voltage	20.4 to 26.4 VDC
Current consumption	1.0 A max.
Ambient temperature	Operating: 0 to +50 °C Storage: -20 to +65 °C with no icing or condensation
Ambient humidity	Operating/storage: 30% to 80% with no condensation
Dimensions	285x225x49 mm (WxHxD)
Weight	Approx. 1.8 kg
Accessories	Instruction Manual, 4 mounting brackets

System Requirements for F500-CD3E Vision Composer Net

CPU	Pentium III 600 MHz min. (Pentium III 1 GHz min. recommended)	
OS	Windows 2000 Professional, Service Pack 4 or higher Windows XP Home Edition, Service Pack 2 or higher Windows XP Professional, Service Pack 2 or higher	
Memory	192 MB min. (256 MB min. recommended)	
Hard disk	300 MB min. available space	
Monitor	Resolution: 1,024 x 768 min. Display colors: High Color (16-bit) min. (True Color (32-bit) min. recommended)	
Network	10BaseT-compliant network (100Base-TX recommended)	
Vison Sensor	Controller	F210-C10-ETN/F210-C15-ETN, F500-C10-ETN / F500-C15-ETN
	Application software	F500-UM Version 3.00 or later


System Configuration

CCTV Lenses*2



3Z4S-LE C1614A
3Z4S-LE B2514D
3Z4S-LE B5014A

Controllers



F210-C10-ETN (NPN)
F210-C15-ETN (PNP)
F500-C10-ETN (NPN)
F500-C15-ETN (PNP)

Application Software



F500-UM3ME/3FE

PC Support Software*1



F500-CD3E

High-precision Lenses




F500-LE16
F500-LE25
F500-LE50

Monitors



F500-M10L
F150-M05L

Consoles




F150-KP
F160-KP

Digital Interface Cameras




F210-S1
F500-S1

Camera Cables*3



F500-VS2 2M

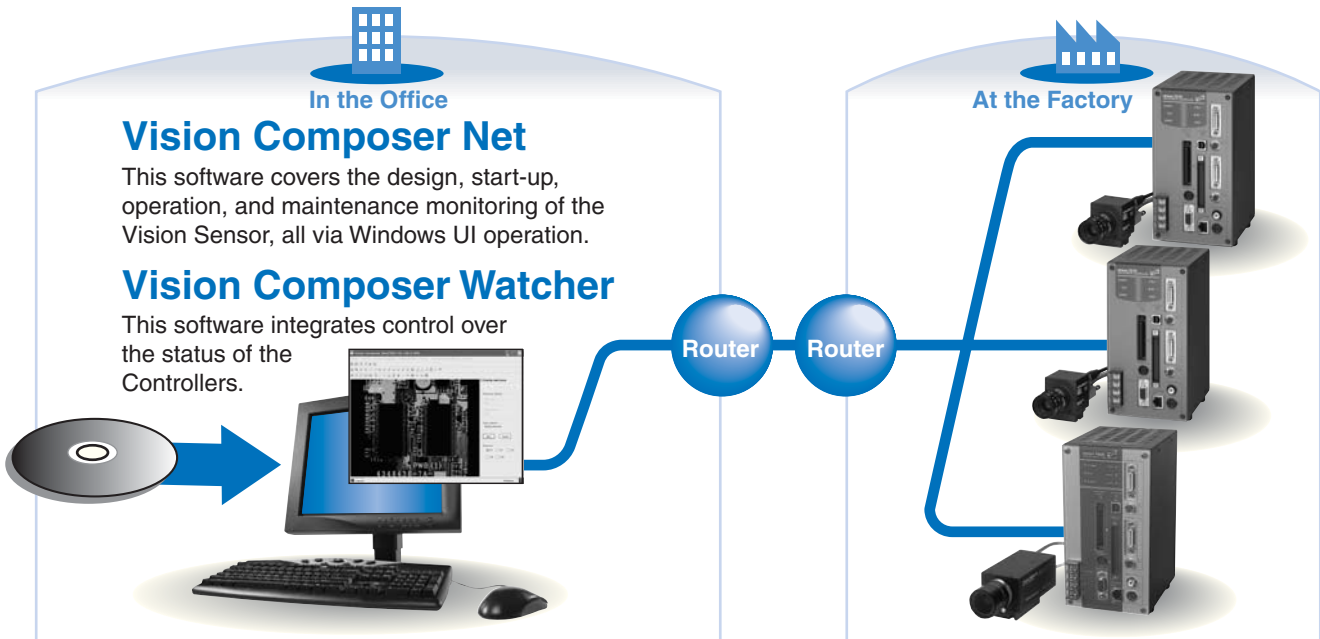
Monitor Cable



F150-VM 2M

*1 Vision Composer Net and Vision Composer Watcher are bundled with personal computer software.
*2 A variety of CCTV Lenses are available in addition to those shown above.
*3 In addition to the standard 2-meter cable length, 5- and 10-meter lengths are available.

Software



Vision Composer Net

Security Function

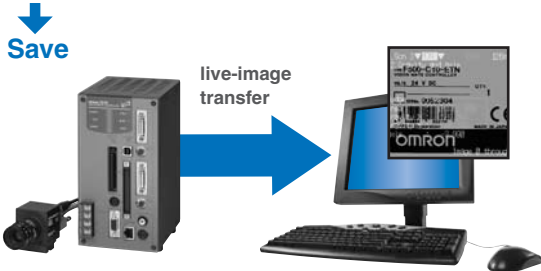
The security function allows you to classify the operations of registered users into three ranks (Administrator, Supervisor, or Operator) depending on their access privileges.

Administrator	Change system data Register users Add access privileges
Supervisor	Add model data Re-register models Change inspection items
Operator	Change criteria Change display screens Adjust inspection regions

Screen Captures

Previously, images were stored via a Compact Flash Card inserted into the Controller. It is now possible to capture network-transferred live images on a personal computer at any desired point in time.

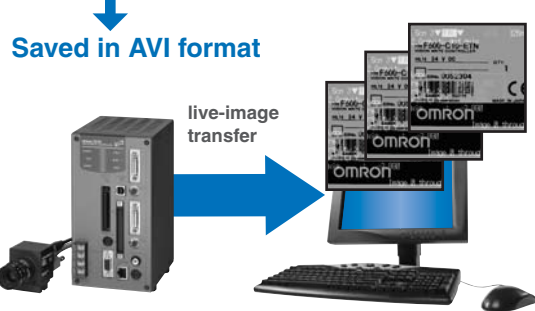
Capture on personal computer



Recording

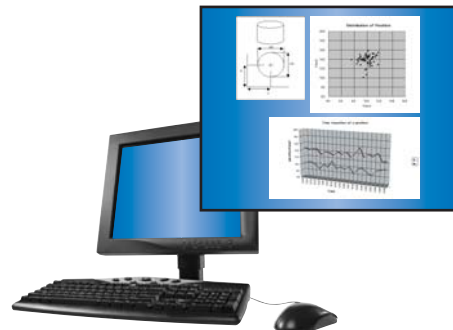
Live images sent by the Controller can be recorded by a personal computer using the AVI format. Effective for trend control.

Recorded by personal computer



Logging

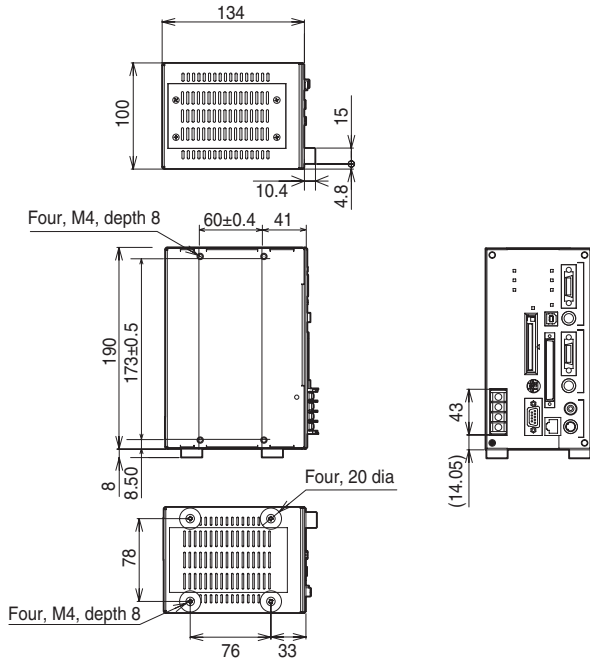
This function lets you accumulate a variety of production data, including images, measurement values, time stamps, production quantity, and defect rates. The macro function in the Controller then makes it possible to process this into the form of data that you need.



Dimensions

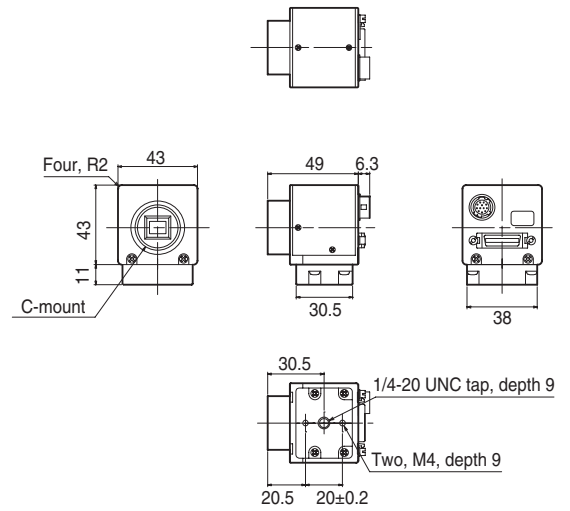
Controller

F210-C10-ETN / F210-C15-ETN
 F500-C10-ETN / F500-C15-ETN

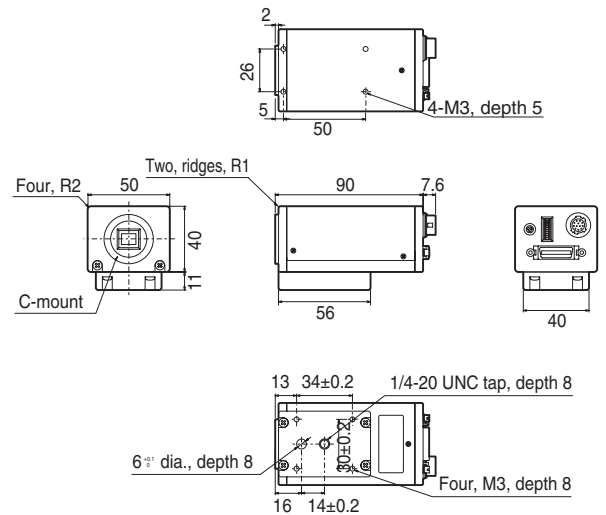


Cameras

F210-S1



F500-S1



Read and Understand This Catalog

Please read and understand this catalog before purchasing the products. Please consult your OMRON representative if you have any questions or comments.

Warranty and Limitations of Liability

WARRANTY

OMRON's exclusive warranty is that the products are free from defects in materials and workmanship for a period of one year (or other period if specified) from date of sale by OMRON.

OMRON MAKES NO WARRANTY OR REPRESENTATION, EXPRESS OR IMPLIED, REGARDING NON-INFRINGEMENT, MERCHANTABILITY, OR FITNESS FOR PARTICULAR PURPOSE OF THE PRODUCTS. ANY BUYER OR USER ACKNOWLEDGES THAT THE BUYER OR USER ALONE HAS DETERMINED THAT THE PRODUCTS WILL SUITABLY MEET THE REQUIREMENTS OF THEIR INTENDED USE. OMRON DISCLAIMS ALL OTHER WARRANTIES, EXPRESS OR IMPLIED.

LIMITATIONS OF LIABILITY

OMRON SHALL NOT BE RESPONSIBLE FOR SPECIAL, INDIRECT, OR CONSEQUENTIAL DAMAGES, LOSS OF PROFITS, OR COMMERCIAL LOSS IN ANY WAY CONNECTED WITH THE PRODUCTS, WHETHER SUCH CLAIM IS BASED ON CONTRACT, WARRANTY, NEGLIGENCE, OR STRICT LIABILITY.

In no event shall responsibility of OMRON for any act exceed the individual price of the product on which liability is asserted.

IN NO EVENT SHALL OMRON BE RESPONSIBLE FOR WARRANTY, REPAIR, OR OTHER CLAIMS REGARDING THE PRODUCTS UNLESS OMRON'S ANALYSIS CONFIRMS THAT THE PRODUCTS WERE PROPERLY HANDLED, STORED, INSTALLED, AND MAINTAINED AND NOT SUBJECT TO CONTAMINATION, ABUSE, MISUSE, OR INAPPROPRIATE MODIFICATION OR REPAIR.

Application Considerations

SUITABILITY FOR USE

OMRON shall not be responsible for conformity with any standards, codes, or regulations that apply to the combination of products in the customer's application or use of the product.

At the customer's request, OMRON will provide applicable third party certification documents identifying ratings and limitations of use that apply to the products. This information by itself is not sufficient for a complete determination of the suitability of the products in combination with the end product, machine, system, or other application or use.

The following are some examples of applications for which particular attention must be given. This is not intended to be an exhaustive list of all possible uses of the products, nor is it intended to imply that the uses listed may be suitable for the products:

- Outdoor use, uses involving potential chemical contamination or electrical interference, or conditions or uses not described in this catalog.
- Nuclear energy control systems, combustion systems, railroad systems, aviation systems, medical equipment, amusement machines, vehicles, safety equipment, and installations subject to separate industry or government regulations.
- Systems, machines, and equipment that could present a risk to life or property.

Please know and observe all prohibitions of use applicable to the products.

NEVER USE THE PRODUCTS FOR AN APPLICATION INVOLVING SERIOUS RISK TO LIFE OR PROPERTY WITHOUT ENSURING THAT THE SYSTEM AS A WHOLE HAS BEEN DESIGNED TO ADDRESS THE RISKS, AND THAT THE OMRON PRODUCT IS PROPERLY RATED AND INSTALLED FOR THE INTENDED USE WITHIN THE OVERALL EQUIPMENT OR SYSTEM.

Disclaimers

CHANGE IN SPECIFICATIONS

Product specifications and accessories may be changed at any time based on improvements and other reasons.

It is our practice to change model numbers when published ratings or features are changed, or when significant construction changes are made. However, some specifications of the product may be changed without any notice. When in doubt, special model numbers may be assigned to fix or establish key specifications for your application on your request. Please consult with your OMRON representative at any time to confirm actual specifications of purchased product.

DIMENSIONS AND WEIGHTS

Dimensions and weights are nominal and are not to be used for manufacturing purposes, even when tolerances are shown.

ERRORS AND OMISSIONS

The information in this catalog has been carefully checked and is believed to be accurate; however, no responsibility is assumed for clerical, typographical, or proofreading errors, or omissions.

PERFORMANCE DATA

Performance data given in this catalog is provided as a guide for the user in determining suitability and does not constitute a warranty. It may represent the result of OMRON's test conditions, and the users must correlate it to actual application requirements. Actual performance is subject to the OMRON Warranty and Limitations of Liability.

PROGRAMMABLE PRODUCTS

OMRON shall not be responsible for the user's programming of a programmable product, or any consequence thereof.

COPYRIGHT AND COPY PERMISSION

This catalog shall not be copied for sales or promotions without permission.

This catalog is protected by copyright and is intended solely for use in conjunction with the product. Please notify us before copying or reproducing this catalog in any manner, for any other purpose. If copying or transmitting this catalog to another, please copy or transmit it in its entirety.



Artisan Technology Group is your source for quality new and certified-used/pre-owned equipment

- FAST SHIPPING AND DELIVERY
- TENS OF THOUSANDS OF IN-STOCK ITEMS
- EQUIPMENT DEMOS
- HUNDREDS OF MANUFACTURERS SUPPORTED
- LEASING/MONTHLY RENTALS
- ITAR CERTIFIED SECURE ASSET SOLUTIONS

SERVICE CENTER REPAIRS

Experienced engineers and technicians on staff at our full-service, in-house repair center

*InstraView*SM REMOTE INSPECTION

Remotely inspect equipment before purchasing with our interactive website at www.instraview.com ↗

WE BUY USED EQUIPMENT

Sell your excess, underutilized, and idle used equipment. We also offer credit for buy-backs and trade-ins. www.artisanng.com/WeBuyEquipment ↗

LOOKING FOR MORE INFORMATION?

Visit us on the web at www.artisanng.com ↗ for more information on price quotations, drivers, technical specifications, manuals, and documentation

Contact us: (888) 88-SOURCE | sales@artisanng.com | www.artisanng.com