

# Type GUB Junction Boxes & Instrument Enclosures

## Use:

To pull or splice wires and/or to mount and enclose electrical devices in hazardous locations.

## Features:

- O-Ring gasket provided to seal out moisture, dust, oil, dirt, etc. for interior and exterior locations
- Mounting lugs provided on all enclosures.
- Tapered threads (NPT) on conduit entries and union hubs
- Large cover opening for easy access
- Ground kit available (See Page V28)

## GUBSW, NGUBSW-A:

- Meter-instrument housing.
- Large diameter site window cover permits maximum visibility of enclosed device.

## GUBDC, GUBDC-A:

- Provides significant increase in cubic inch capacity.
- Cast-in brackets for use with breaker bar tools.
- Adjustable 90° mounting plates are available.

## Materials:

- GUB series - Cast iron box with copper free aluminum cover; Buna-N Gasket
- NGUB-A series - Copper-free aluminum box and cover Neoprene O-Ring

## Finishes:

- Hot dip galvanized on cast iron.
- Gray epoxy powder coat on aluminum

## Dimensional Data:

See Page V26-27

## Ordering Numbers:

See Page V25-29


## May be ordered one of three ways:

- 1 Blank for field drilling — instructions provided with each box to maintain UL listing.
- 2 Factory drilled and tapped conduit entries or union hubs in standard conduit arrangements for easy ordering.
- 3 Custom conduit entries or union hub arrangements available. Contact your local Representative

## Applicable Third Party Standards:

UL Standard: 886  
Suitable for wet locations.  
ANSI C33.84 and C33.27  
ASTM A-153-73 Class A  
Fed. Spec: W-C 586C  
Mil. Spec: 100 and 130  
CSA Standard C22.2, No. 30

## Third Party Certification:

 **Series GUB, NGUB, GUBDC**  
UL Listed: E-30513, E-85310  
**Series GUBSW, NGUBSW**  
UL Listed: E-113735, E-103220



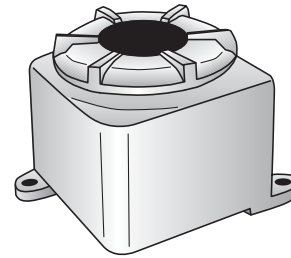
**Series GUB, NGUB, GUBDC**  
CSA Certified: 43437, LR20945  
**Series GUBSW, NGUBNWN**  
CSA Certified 43437

## Compliances:

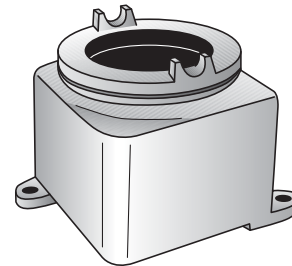
Class I, Div. 1, 2, Groups B $\diamond\diamond$ , C $\diamond\diamond$ , D  
Class I, Zone 1, 2, Groups IIA, IIB $\diamond\diamond$ +H2 $\diamond\diamond$   
Class II, Div. 1, 2, Groups E, F, G  
Class III  
NEMA 4, 4X $\dagger$ , 7B $\diamond\diamond$ C $\diamond\diamond$ D, 9EFG

$\dagger$  NEMA 4X applies to NGUB, NGUBSW aluminum boxes and covers.

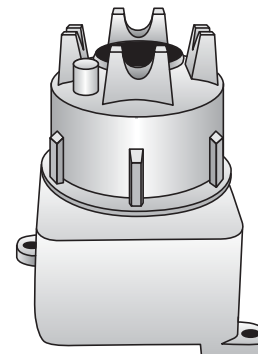
$\diamond\diamond$  For Class I, Groups B and C, Zone I, Groups IIB+H2 all conduits must be sealed within a specified distance of the enclosure. See catalog ordering information for details.



**Type GUB**  
**Cast Iron Box with Aluminum Cover**  
**Type NGUB-A**  
**Cast Aluminum Box and Cover**



**Type GUBSW**  
**Cast Iron Box with Copper-Free**  
**Cast Aluminum Site Cover**  
**Type NGUBSW-A**  
**Copper-Free Cast Aluminum Box**  
**and Site Window Cover**



**Type GUBDC**  
**Cast Iron Box with Copper-Free**  
**Aluminum Dome Cover**  
**Type NGUBDC-A**  
**Copper-Free Aluminum Box**  
**and Dome Cover**

# Type GUB Junction Boxes & Instrument Enclosures

**Ordering Information:**

Catalog Number				Inside Dimensions (inches)			Maximum Mounting		Seal Distance (In.)(1)	
Standard Cover		Site Window Cover		Width	Height	Depth	Conduit	Plate Size	Group B	Group C
Aluminum	Iron	Aluminum	Iron							
NGUB443A	GUB-443	NGUBSW443A	GUBSW-443	4¼	4¼	3¼	¾	3%	18	None
NGUB555A	--	NGUBSW555A	--	5%	5%	5	¾	4	3	None
NGUB664A	GUB-664	NGUBSW664A	GUBSW-664	6%	6%	4¼	2	5%	18	18
NGUB976A	--	NGUBSW976A	--	9¼	7½	6	2	6¼	18	18
NGUB984A	GUB-984	NGUBSW984A	GUBSW-984	9%	8%	4%	2	7¼	18	18
NGUB1093A	GUB-1093	NGUBSW1093A	GUBSW-1092	10	9	3 <sup>15</sup> / <sub>16</sub>	2	8	18	18
NGUB10105A	GUB-10105	NGUBSW10105A	GUBSW-10105	10%	10%	5½	4	9	18	18
NGUB10106A	--	NGUBSW10106A	--	10%	10%	6	4	8%	3	3
NGUB10108A	--	NGUBSW10108A	--	10%	10%	8	4	8%	3	3
NGUB12128A	--	NGUBSW12128A	--	12%	12%	8	4	10¼	3	3
NGUB121212A	--	NGUBSW121212A	--	12%	12%	12	4	10¼	3	3

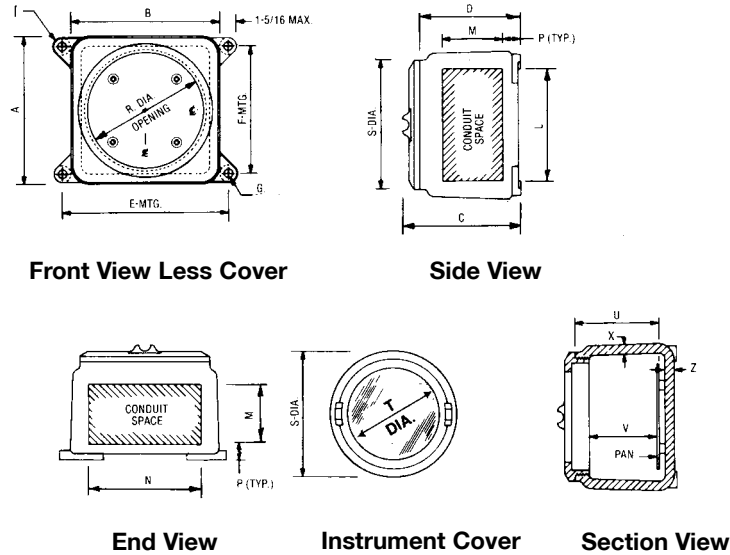
(1) For Groups B and C, all conduits must be sealed within specified distance of enclosure.

Catalog Number		Drilled and Tapped Conduit Entries - Trade Size of Conduit										Union Hubs - Trade Size of Conduit										
		Side	½"	¾"	1"	1¼"	1½"	2"	2½"	3"	3½"	4"	½"	¾"	1"	1¼"	1½"	2"	2½"	3"	3½"	
NGUB443A	Long	2	2	--	--	--	--	--	--	--	--	2	2	--	--	--	--	--	--	--	--	--
	Short	2	2	--	--	--	--	--	--	--	--	2	2	--	--	--	--	--	--	--	--	--
GUB-443	Long	2	2	--	--	--	--	--	--	--	--	2	2	--	--	--	--	--	--	--	--	--
	Short	2	2	--	--	--	--	--	--	--	--	2	2	--	--	--	--	--	--	--	--	--
NGUB555A	Long	3	2	--	--	--	--	--	--	--	--	2	2	1	1	1	1	--	--	--	--	--
	Short	3	2	--	--	--	--	--	--	--	--	2	2	1	1	1	1	--	--	--	--	--
NGUB664A GUB-664	Long	3	3	2	2	2	1	1▲	--	--	--	3	3	2	2	1	1	1▲	--	--	--	--
	Short	3	3	2	2	2	1	1▲	--	--	--	3	3	2	2	1	1	1▲	--	--	--	--
NGUB976A	Long	5	4	4	3	3	2	--	--	--	--	5	4	3	3	2	2	--	--	--	--	--
	Short	4	3	3	2	2	2	--	--	--	--	4	3	2	2	2	1	--	--	--	--	--
NGUB984A	Long	5	5	4	3	3	2	--	--	--	--	5	4	3	3	2	2	--	--	--	--	--
	Short	5	4	3	3	2	2	--	--	--	--	4	4	3	2	2	2	--	--	--	--	--
GUB-984	Long	5	5	4	3	3	2	2▲	--	--	--	5	4	3	3	2	2	2▲	--	--	--	--
	Short	5	4	3	3	2	2	2▲	--	--	--	4	4	3	2	2	2	1▲	--	--	--	--
NGUB1093A	Long	6◆	5◆	4	3	3	2	--	--	--	--	5◆	4◆	3	3	2	2	--	--	--	--	--
	Short	5◆	4◆	4	3	3	2	--	--	--	--	5◆	4◆	3	2	2	2	--	--	--	--	--
GUB-1093	Long	6◆	5◆	4	3	3	2	--	--	--	--	5◆	4◆	3	3	2	2	--	--	--	--	--
	Short	5◆	4◆	4	3	3	2	--	--	--	--	5◆	4◆	3	3	2	2	--	--	--	--	--
NGUB10105A GUB-10105	Long	6◆	5◆	5	4	3	3	2	2	1	--	6◆	5◆	3	3	3	2	2	2	1	--	--
	Short	6◆	5◆	5	4	3	3	2	2	1	--	6◆	5◆	3	3	3	2	2	2	1	--	--
NGUB1016A	Long	6◆	5◆	4	3	3	2	2	2	--	--	5◆	4◆	3	3	2	2	2	1	--	--	--
	Short	6◆	5◆	4	3	3	2	2	2	--	--	5◆	4◆	3	3	2	2	2	1	--	--	--
NGUB10108A	Long	6◆	5◆	4	3	2	2	2	2	1	1	5◆	4◆	3	3	2	2	2	1	1	1	1
	Short	6◆	5◆	4	3	3	2	2	2	1	1	5◆	4◆	3	3	3	2	2	1	1	1	1
NGUB12128A	Long	7◆	6◆	5	4	4	3	2	2	2	1	6◆	5◆	4	3	3	3	2	2	2	1	1
	Short	7◆	6◆	5	4	4	3	2	2	2	1	6◆	5◆	4	3	3	3	2	2	2	1	1
NGUB121212A	Long	7◆	6◆	5	4	4	3	2	2	2	1	6◆	5◆	4	3	3	2	2	2	2	1	1
	Short	7◆	6◆	5	4	4	3	2	2	2	1	6◆	5◆	4	3	3	2	2	2	2	1	1

◆ Boss required - contact factory for price and availability.  
▲ Mounting feet located in vertical position.

# Type GUB Junction Boxes & Instrument Enclosures

Dimensional Data (All dimensions are in Inches):



STANDARD COVER		Outside Dimensions				Mounting Mounting Lugs				Conduit Space				Cover Dia. Opening	Cover Dia. S	Depth		Wall Thickness		
Catalog Number Aluminum	Catalog Number Iron	A	B	C	D	E	F	G	I	L	M	N	P	R	S	U	V	X	Z	
NGUB443A	GUB-443	5 <sup>5</sup> / <sub>16</sub>	5 <sup>5</sup> / <sub>16</sub>	5 <sup>5</sup> / <sub>16</sub>	4 <sup>9</sup> / <sub>16</sub>	6 <sup>1</sup> / <sub>4</sub>	3 <sup>7</sup> / <sub>8</sub>	3 <sup>3</sup> / <sub>8</sub>	2	3 <sup>3</sup> / <sub>4</sub>	2 <sup>13</sup> / <sub>16</sub>	3 <sup>3</sup> / <sub>4</sub>	3 <sup>1</sup> / <sub>4</sub>	4	4 <sup>3</sup> / <sub>8</sub>	4	3	7 <sup>1</sup> / <sub>16</sub>	7 <sup>1</sup> / <sub>16</sub>	
NGUB555A	--	6 <sup>1</sup> / <sub>4</sub>	6 <sup>1</sup> / <sub>4</sub>	6 <sup>15</sup> / <sub>16</sub>	6 <sup>1</sup> / <sub>4</sub>	7 <sup>1</sup> / <sub>2</sub>	5	5	2	4 <sup>1</sup> / <sub>4</sub>	4 <sup>1</sup> / <sub>16</sub>	4 <sup>1</sup> / <sub>4</sub>	1 <sup>15</sup> / <sub>16</sub>	4 <sup>1</sup> / <sub>2</sub>	5 <sup>1</sup> / <sub>4</sub>	5 <sup>1</sup> / <sub>2</sub>	4 <sup>3</sup> / <sub>8</sub>	7 <sup>1</sup> / <sub>16</sub>	3 <sup>3</sup> / <sub>8</sub>	
NGUB664A	GUB-664	7	7	6 <sup>1</sup> / <sub>2</sub>	5 <sup>11</sup> / <sub>16</sub>	8 <sup>3</sup> / <sub>8</sub>	5 <sup>3</sup> / <sub>4</sub>	3 <sup>3</sup> / <sub>8</sub>	2	5 <sup>1</sup> / <sub>2</sub>	3 <sup>3</sup> / <sub>4</sub>	5 <sup>1</sup> / <sub>2</sub>	7 <sup>7</sup> / <sub>8</sub>	5 <sup>15</sup> / <sub>16</sub>	6 <sup>1</sup> / <sub>2</sub>	5	4	7 <sup>1</sup> / <sub>16</sub>	7 <sup>1</sup> / <sub>16</sub>	
NGUB976A	--	10 <sup>1</sup> / <sub>4</sub>	8 <sup>1</sup> / <sub>2</sub>	8 <sup>3</sup> / <sub>16</sub>	7 <sup>7</sup> / <sub>16</sub>	9 <sup>3</sup> / <sub>4</sub>	9	9	4	8 <sup>3</sup> / <sub>4</sub>	4 <sup>15</sup> / <sub>16</sub>	6 <sup>1</sup> / <sub>2</sub>	1 <sup>13</sup> / <sub>16</sub>	7	7 <sup>3</sup> / <sub>4</sub>	6 <sup>3</sup> / <sub>8</sub>	5 <sup>1</sup> / <sub>2</sub>	1 <sup>1</sup> / <sub>2</sub>	7 <sup>1</sup> / <sub>16</sub>	
NGUB984A	GUB-984	10	9	6 <sup>3</sup> / <sub>8</sub>	5 <sup>5</sup> / <sub>8</sub>	10 <sup>1</sup> / <sub>8</sub>	8 <sup>1</sup> / <sub>2</sub>	3 <sup>3</sup> / <sub>8</sub>	2	8 <sup>1</sup> / <sub>2</sub>	3 <sup>13</sup> / <sub>16</sub>	7 <sup>1</sup> / <sub>2</sub>	1 <sup>15</sup> / <sub>16</sub>	7 <sup>15</sup> / <sub>16</sub>	8 <sup>3</sup> / <sub>8</sub>	5 <sup>1</sup> / <sub>8</sub>	4 <sup>1</sup> / <sub>16</sub>	7 <sup>1</sup> / <sub>16</sub>	7 <sup>1</sup> / <sub>16</sub>	
NGUB1093A	GUB-1093	10	9	6 <sup>3</sup> / <sub>16</sub>	5 <sup>11</sup> / <sub>16</sub>	12	9 <sup>1</sup> / <sub>4</sub>	3 <sup>3</sup> / <sub>8</sub>	4	8 <sup>3</sup> / <sub>8</sub>	3 <sup>3</sup> / <sub>16</sub>	7 <sup>1</sup> / <sub>2</sub>	1 <sup>15</sup> / <sub>16</sub>	8 <sup>15</sup> / <sub>16</sub>	9 <sup>3</sup> / <sub>4</sub>	4 <sup>3</sup> / <sub>8</sub>	3 <sup>3</sup> / <sub>8</sub>	1 <sup>11</sup> / <sub>16</sub>	1 <sup>1</sup> / <sub>16</sub>	
NGUB10105A	GUB-10105	12	12	8 <sup>3</sup> / <sub>4</sub>	7 <sup>7</sup> / <sub>8</sub>	13 <sup>5</sup> / <sub>8</sub>	10	7	4	9 <sup>3</sup> / <sub>4</sub>	4 <sup>13</sup> / <sub>16</sub>	9 <sup>3</sup> / <sub>4</sub>	1 <sup>1</sup> / <sub>4</sub>	9 <sup>3</sup> / <sub>8</sub>	11	6 <sup>1</sup> / <sub>2</sub>	5 <sup>1</sup> / <sub>16</sub>	1 <sup>11</sup> / <sub>16</sub>	1 <sup>1</sup> / <sub>16</sub>	
NGUB10106A	--	11 <sup>5</sup> / <sub>8</sub>	11 <sup>5</sup> / <sub>8</sub>	9 <sup>3</sup> / <sub>8</sub>	7 <sup>7</sup> / <sub>8</sub>	13	10	7	4	8 <sup>3</sup> / <sub>8</sub>	4 <sup>11</sup> / <sub>16</sub>	8 <sup>3</sup> / <sub>8</sub>	1 <sup>1</sup> / <sub>8</sub>	9 <sup>1</sup> / <sub>4</sub>	10 <sup>1</sup> / <sub>4</sub>	6 <sup>3</sup> / <sub>16</sub>	5 <sup>1</sup> / <sub>2</sub>	3 <sup>1</sup> / <sub>4</sub>	1 <sup>1</sup> / <sub>16</sub>	
NGUB10108A	--	11 <sup>5</sup> / <sub>8</sub>	11 <sup>5</sup> / <sub>8</sub>	11 <sup>3</sup> / <sub>8</sub>	9 <sup>3</sup> / <sub>8</sub>	13	10	7	4	8 <sup>3</sup> / <sub>8</sub>	6 <sup>11</sup> / <sub>16</sub>	8 <sup>3</sup> / <sub>8</sub>	1 <sup>1</sup> / <sub>8</sub>	9 <sup>1</sup> / <sub>4</sub>	10 <sup>1</sup> / <sub>4</sub>	8 <sup>3</sup> / <sub>16</sub>	7 <sup>1</sup> / <sub>2</sub>	3 <sup>1</sup> / <sub>4</sub>	1 <sup>1</sup> / <sub>16</sub>	
NGUB12128A	--	13 <sup>5</sup> / <sub>8</sub>	13 <sup>5</sup> / <sub>8</sub>	11 <sup>3</sup> / <sub>4</sub>	9 <sup>3</sup> / <sub>8</sub>	15	10	7	4	10 <sup>7</sup> / <sub>8</sub>	6 <sup>11</sup> / <sub>16</sub>	10 <sup>7</sup> / <sub>8</sub>	1 <sup>1</sup> / <sub>8</sub>	11 <sup>1</sup> / <sub>4</sub>	12 <sup>1</sup> / <sub>4</sub>	8 <sup>3</sup> / <sub>16</sub>	7 <sup>1</sup> / <sub>2</sub>	3 <sup>1</sup> / <sub>4</sub>	1 <sup>1</sup> / <sub>16</sub>	
NGUB121212A	--	13 <sup>5</sup> / <sub>8</sub>	13 <sup>5</sup> / <sub>8</sub>	15 <sup>3</sup> / <sub>4</sub>	13 <sup>3</sup> / <sub>8</sub>	15	10	7	4	10 <sup>3</sup> / <sub>4</sub>	10 <sup>11</sup> / <sub>16</sub>	10 <sup>3</sup> / <sub>4</sub>	1 <sup>1</sup> / <sub>8</sub>	11 <sup>1</sup> / <sub>4</sub>	12 <sup>1</sup> / <sub>4</sub>	12 <sup>3</sup> / <sub>16</sub>	11 <sup>1</sup> / <sub>2</sub>	3 <sup>1</sup> / <sub>4</sub>	1 <sup>1</sup> / <sub>16</sub>	
SITE WINDOW COVER		Outside Dimensions				Mounting Mounting Lugs				Conduit Space				Cover Dia. Opening	Cover Dia. S	Site Window Dia. T	Depth		Side Wall Thickness	
Catalog Number Aluminum	Catalog Number Iron	A	B	C	D	E	F	G	I	L	M	N	P	R	S	T	U	V	X	Z
NGUBSW443A	GUBSW-443	5 <sup>5</sup> / <sub>16</sub>	5 <sup>5</sup> / <sub>16</sub>	5 <sup>5</sup> / <sub>16</sub>	4 <sup>9</sup> / <sub>16</sub>	6 <sup>1</sup> / <sub>4</sub>	3 <sup>7</sup> / <sub>8</sub>	3 <sup>3</sup> / <sub>8</sub>	2	3 <sup>3</sup> / <sub>4</sub>	2 <sup>13</sup> / <sub>16</sub>	3 <sup>3</sup> / <sub>4</sub>	3 <sup>1</sup> / <sub>4</sub>	4	4 <sup>3</sup> / <sub>8</sub>	2 <sup>1</sup> / <sub>8</sub>	4	3	7 <sup>1</sup> / <sub>16</sub>	7 <sup>1</sup> / <sub>16</sub>
NGUBSW555A	--	6 <sup>1</sup> / <sub>4</sub>	6 <sup>1</sup> / <sub>4</sub>	6 <sup>15</sup> / <sub>16</sub>	6 <sup>1</sup> / <sub>4</sub>	7 <sup>1</sup> / <sub>2</sub>	5	5	2	4 <sup>1</sup> / <sub>4</sub>	4 <sup>1</sup> / <sub>16</sub>	4 <sup>1</sup> / <sub>4</sub>	1 <sup>15</sup> / <sub>16</sub>	4 <sup>1</sup> / <sub>2</sub>	5 <sup>1</sup> / <sub>4</sub>	3 <sup>3</sup> / <sub>16</sub>	5 <sup>1</sup> / <sub>2</sub>	4 <sup>3</sup> / <sub>8</sub>	7 <sup>1</sup> / <sub>16</sub>	3 <sup>3</sup> / <sub>8</sub>
NGUBSW664A	GUBSW-664	7	7	6 <sup>1</sup> / <sub>2</sub>	5 <sup>11</sup> / <sub>16</sub>	8 <sup>3</sup> / <sub>8</sub>	5 <sup>3</sup> / <sub>4</sub>	3 <sup>3</sup> / <sub>8</sub>	2	5 <sup>1</sup> / <sub>2</sub>	3 <sup>3</sup> / <sub>4</sub>	5 <sup>1</sup> / <sub>2</sub>	7 <sup>7</sup> / <sub>8</sub>	5 <sup>15</sup> / <sub>16</sub>	6 <sup>1</sup> / <sub>2</sub>	4	5	4	7 <sup>1</sup> / <sub>16</sub>	7 <sup>1</sup> / <sub>16</sub>
NGUBSW976A	--	10 <sup>1</sup> / <sub>4</sub>	8 <sup>1</sup> / <sub>2</sub>	8 <sup>3</sup> / <sub>16</sub>	7 <sup>7</sup> / <sub>16</sub>	9 <sup>3</sup> / <sub>4</sub>	9	9	4	8 <sup>3</sup> / <sub>4</sub>	4 <sup>15</sup> / <sub>16</sub>	6 <sup>1</sup> / <sub>2</sub>	1 <sup>13</sup> / <sub>16</sub>	7	7 <sup>3</sup> / <sub>4</sub>	5 <sup>1</sup> / <sub>8</sub>	6 <sup>3</sup> / <sub>8</sub>	5 <sup>1</sup> / <sub>2</sub>	1 <sup>1</sup> / <sub>2</sub>	7 <sup>1</sup> / <sub>16</sub>
NGUBSW984A	GUBSW-984	10	9	6 <sup>3</sup> / <sub>8</sub>	5 <sup>5</sup> / <sub>8</sub>	10 <sup>1</sup> / <sub>8</sub>	8 <sup>1</sup> / <sub>2</sub>	3 <sup>3</sup> / <sub>8</sub>	2	8 <sup>1</sup> / <sub>2</sub>	3 <sup>13</sup> / <sub>16</sub>	7 <sup>1</sup> / <sub>2</sub>	1 <sup>15</sup> / <sub>16</sub>	7 <sup>15</sup> / <sub>16</sub>	8 <sup>3</sup> / <sub>8</sub>	5 <sup>1</sup> / <sub>8</sub>	5 <sup>1</sup> / <sub>8</sub>	4 <sup>1</sup> / <sub>16</sub>	7 <sup>1</sup> / <sub>16</sub>	7 <sup>1</sup> / <sub>16</sub>
NGUBSW1093A	GUBSW-1093	10	9	6 <sup>3</sup> / <sub>16</sub>	5 <sup>11</sup> / <sub>16</sub>	12	9 <sup>1</sup> / <sub>4</sub>	3 <sup>3</sup> / <sub>8</sub>	4	8 <sup>3</sup> / <sub>8</sub>	3 <sup>3</sup> / <sub>16</sub>	7 <sup>1</sup> / <sub>2</sub>	1 <sup>15</sup> / <sub>16</sub>	8 <sup>15</sup> / <sub>16</sub>	9 <sup>3</sup> / <sub>4</sub>	5 <sup>1</sup> / <sub>8</sub>	4 <sup>3</sup> / <sub>8</sub>	3 <sup>3</sup> / <sub>8</sub>	1 <sup>11</sup> / <sub>16</sub>	1 <sup>1</sup> / <sub>16</sub>
NGUBSW10105A	GUBSW-10105	12	12	8 <sup>3</sup> / <sub>4</sub>	7 <sup>7</sup> / <sub>8</sub>	13 <sup>5</sup> / <sub>8</sub>	10	7	4	9 <sup>3</sup> / <sub>4</sub>	4 <sup>13</sup> / <sub>16</sub>	9 <sup>3</sup> / <sub>4</sub>	1 <sup>1</sup> / <sub>4</sub>	9 <sup>3</sup> / <sub>8</sub>	11	7 <sup>1</sup> / <sub>2</sub>	6 <sup>1</sup> / <sub>2</sub>	5 <sup>1</sup> / <sub>16</sub>	1 <sup>11</sup> / <sub>16</sub>	1 <sup>1</sup> / <sub>16</sub>
NGUBSW10106A	--	11 <sup>5</sup> / <sub>8</sub>	11 <sup>5</sup> / <sub>8</sub>	9 <sup>3</sup> / <sub>8</sub>	7 <sup>7</sup> / <sub>8</sub>	13	10	7	4	8 <sup>3</sup> / <sub>8</sub>	4 <sup>11</sup> / <sub>16</sub>	8 <sup>3</sup> / <sub>8</sub>	1 <sup>1</sup> / <sub>8</sub>	9 <sup>1</sup> / <sub>4</sub>	10 <sup>1</sup> / <sub>4</sub>	7 <sup>3</sup> / <sub>8</sub>	6 <sup>3</sup> / <sub>16</sub>	5 <sup>1</sup> / <sub>2</sub>	3 <sup>1</sup> / <sub>4</sub>	1 <sup>1</sup> / <sub>16</sub>
NGUBSW10108A	--	11 <sup>5</sup> / <sub>8</sub>	11 <sup>5</sup> / <sub>8</sub>	11 <sup>3</sup> / <sub>8</sub>	9 <sup>3</sup> / <sub>8</sub>	13	10	7	4	8 <sup>3</sup> / <sub>8</sub>	6 <sup>11</sup> / <sub>16</sub>	8 <sup>3</sup> / <sub>8</sub>	1 <sup>1</sup> / <sub>8</sub>	9 <sup>1</sup> / <sub>4</sub>	10 <sup>1</sup> / <sub>4</sub>	7 <sup>3</sup> / <sub>8</sub>	8 <sup>3</sup> / <sub>16</sub>	7 <sup>1</sup> / <sub>2</sub>	3 <sup>1</sup> / <sub>4</sub>	1 <sup>1</sup> / <sub>16</sub>
NGUBSW12128A	--	13 <sup>5</sup> / <sub>8</sub>	13 <sup>5</sup> / <sub>8</sub>	11 <sup>3</sup> / <sub>4</sub>	9 <sup>3</sup> / <sub>8</sub>	15	10	7	4	10 <sup>7</sup> / <sub>8</sub>	6 <sup>11</sup> / <sub>16</sub>	10 <sup>7</sup> / <sub>8</sub>	1 <sup>1</sup> / <sub>8</sub>	11 <sup>1</sup> / <sub>4</sub>	12 <sup>1</sup> / <sub>4</sub>	9 <sup>3</sup> / <sub>16</sub>	8 <sup>3</sup> / <sub>16</sub>	7 <sup>1</sup> / <sub>2</sub>	3 <sup>1</sup> / <sub>4</sub>	1 <sup>1</sup> / <sub>16</sub>
NGUBSW121212A	--	13 <sup>5</sup> / <sub>8</sub>	13 <sup>5</sup> / <sub>8</sub>	15 <sup>3</sup> / <sub>4</sub>	13 <sup>3</sup> / <sub>8</sub>	15	10	7	4	10 <sup>3</sup> / <sub>4</sub>	10 <sup>11</sup> / <sub>16</sub>	10 <sup>3</sup> / <sub>4</sub>	1 <sup>1</sup> / <sub>8</sub>	11 <sup>1</sup> / <sub>4</sub>	12 <sup>1</sup> / <sub>4</sub>	9 <sup>3</sup> / <sub>16</sub>	12 <sup>3</sup> / <sub>16</sub>	11 <sup>1</sup> / <sub>2</sub>	3 <sup>1</sup> / <sub>4</sub>	1 <sup>1</sup> / <sub>16</sub>

# Type GUB Junction Boxes & Instrument Enclosures

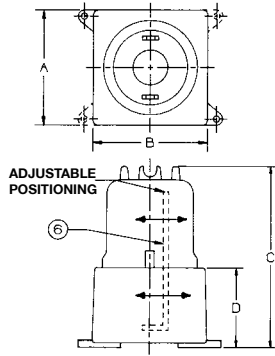
**Ordering Information:**

**Type GUBDC**

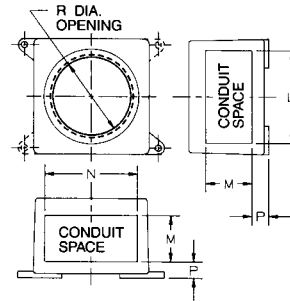
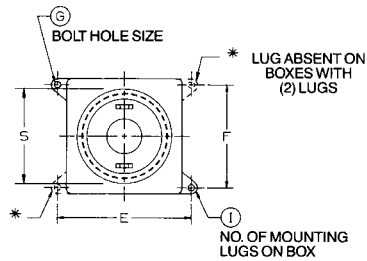
**Cast Iron Box with Copper Free Aluminum Dome Cover**

**Type GUBDC-A**

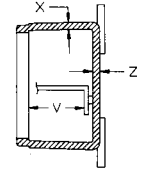
**Copper Free Aluminum Box & Dome Cover**



DOME COVER STYLE



CONDUIT SPACE (DOME NOT SHOWN FOR CLARITY)



SECTION VIEW

Catalog Number		Refer to Catalog No. on Page V93 for Dimensions	Dimensions in Inches			Seal Distance (In) <sup>(1)</sup>		Mounting Plate Adjustment*
Aluminum	Iron		Overall Height C	Maximum Conduit Size	Mounting Plate Size	Group B	Group C	
GUBDC-4-664A	GUBDC-4-664	GUB-664	10 <sup>7</sup> / <sub>8</sub>	2	4 x 7 <sup>1</sup> / <sub>2</sub>	18	18	1 <sup>1</sup> / <sub>16</sub>
GUBDC-10-664A	GUBDC-10-664	GUB-664	16 <sup>7</sup> / <sub>8</sub>	2	4 x 13 <sup>1</sup> / <sub>2</sub>	18	18	1 <sup>1</sup> / <sub>16</sub>
GUBDC-6-984A	GUBDC-6-984	GUB-984	13 <sup>3</sup> / <sub>8</sub>	2	5 <sup>3</sup> / <sub>4</sub> x 9 <sup>1</sup> / <sub>2</sub>	18	18	2
GUBDC-10-10105A	GUBDC-10-10105	GUB-10105	18 <sup>7</sup> / <sub>8</sub>	4	6 <sup>7</sup> / <sub>8</sub> x 14 <sup>1</sup> / <sub>4</sub>	18	18	2 <sup>3</sup> / <sub>4</sub>

\*Optional mounting plate is adjustable. It may be located in center of cover or toward either side of dome cover.

(1) For Groups B and C, all conduits must be sealed within specified distance of enclosures.

# Type GUB Junction Boxes & Instrument Enclosures

**Options:**

GROUNDING KITS	
Catalog Number	Wire Capacity Al-Cu Tinned Copper
NGK-04	#14-4 AWG
NGK-10	8-1/0 AWG
NGK-25	6 AWG-250MCM

MOUNTING PLATE GALVANIZED STEEL	
Catalog Number	Box Size
NMPG-443	GUB-443
NMPG-555	GUB-555
NMPG-664	GUB-664
NMPG-976	GUB-976
NMPG-984	GUB-984
NMPG-1093	GUB-1093
NMPG-10105	GUB-10105
NMPG-10106	GUB-10106
NMPG-10106	GUB-10108
NMPG-12128	GUB-12128
NMPG-121212	GUB-121212

90° MOUNTING PLATE GALVANIZED STEEL	
Catalog Number	Box Size
NMD-4-664G	GUB-664
NMD-10-664G	GUB-664
NMD-6-984G	GUB-984
NMD-8-1093G	GUB-1093
NMD-10-10105G	GUB-10105

FACTORY INSTALLED CONDUIT ENTRIES DRILLED AND TAPPED	
Trade Size (Inches)	Catalog No. (Symbol)
1/2	1
3/4	2
1	3
1 1/4	4
1 1/2	5
2	6
2 1/2	7
3	8
3 1/2	9
4	10
None	0

MOUNTING PLATE ALUMINUM	
Catalog Number	Box Size
NMPA-443	GUB-443
NMPA-555	GUB-555
NMPA-664	GUB-664
NMPA-976	GUB-976
NMPA-984	GUB-984
NMPA-1093	GUB-1093
NMPA-10105	GUB-10105
NMPA-10106	GUB-10106
NMPA-10106	GUB-10108
NMPA-12128	GUB-12128
NMPA-121212	GUB-121212

90° MOUNTING PLATE ALUMINUM	
Catalog Number	Box Size
NMD-4-664A	GUB-664
NMD-10-664A	GUB-664
NMD-6-984A	GUB-984
NMD-8-1093A	GUB-1093
NMD-10-10105A	GUB-10105

FACTORY INSTALLED CONDUIT ENTRIES UNION HUB	
Trade Size (Inches)	Catalog No. (Symbol)
1/2	W
3/4	X
1	Y
1 1/4	R
1 1/2	S
2	T
2 1/2	U
3	V
3 1/2	WD
4	XD
None	0

O-Z/Gedney Type UNY

REPLACEMENT SITE WINDOW COVERS FOR GUBSW SERIES	
Catalog Number	Box Size
NSW-443A	GUBSW-443A
NSW-555A	GUBSW-555A
NSW-664A	GUBSW-664A
NSW-976A	GUBSW-976A
NSW-984A	GUBSW-984A
NSW-1093A	GUBSW-1093A
NSW-10105A	GUBSW-10105A
NSW-10106A	GUBSW-10106/8A
NSW-12128A	GUBSW-12128/12A

REPLACEMENT DOME COVERS	
Catalog Number	Box Size
DC-4-664A	GUB-664
DC-10-664A	GUB-664
DC-6-984A	GUB-984
DC-8-1093A	GUB-1093
DC-10-10105A	GUB-10105

REPLACEMENT FLAT COVERS ALUMINUM	
Catalog Number	Box Size
NFC-443A	GUB-443A
NFC-555A	GUB-555A
NFC-664A	GUB-664A
FC-664A1	GUB-664
NFC-976A	GUB-976A
NFC-984A	GUB-984A
NFC-1093A	GUB-1093A
NFC-10105A	GUB-10105A
NFC-1010A	GUB-10106A
NFC-1010A	GUB-10108A
NFC-1212A	GUB-12128A
NFC-1212A	GUB-121212A
NFC-1917A	GUB-191710A

DRAIN BREATHER	
Description	Factory Installed Suffix
Drain Fitting	DN
Breather Fitting	BR

Drilled and tapped installation included.

# Type GUB Junction Boxes & Instrument Enclosures

### Drill and Tap Boxes Ordering Information:

GUB boxes can be ordered with drilled and tapped conduit entries or union hubs subject to the parameters of Table 3.

#### To Order:

- 1 Select box from appropriate catalog page.
- 2 Determine standard conduit arrangement from Table 1 or use the custom GUB drilling template on the following page.
- 3 Verify the size of GUB selected using Table 3 for conduit entries or union hubs required.
- 4 Select the corresponding symbol from Table 2 for the conduit entries or union hubs needed.
- 5 Mounting lugs (when provided) are on the left & right side of box, relative to illustrations in Table 1.
- 6 All threaded entries will be centered and evenly spaced on the box wall(s).

#### Examples Standard or Custom:

##### STANDARD

- 1 Box: GUB-984
- 2 Arrangement: 12
- 3 Required: One ½" drilled and tapped entry at "a"; no entry at "b"; one 1" union hub at "c"; two ¾" drilled and tapped entries at "d" and "e".
- 4 Symbols: Substitute symbols for entry sizes in clockwise order around box starting with location "a".

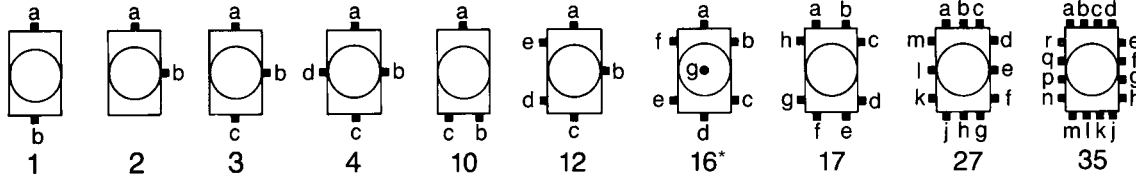
Completed Example: GUB-984-12-10Y22

##### CUSTOM

- 1 Box: GUB-10105
- 2 Arrangement: Photocopy template on page V31 and mark-up with all dimensions for conduit entries.
- 3 Required: All conduit entries and options located on templates.
- 4 Symbols: Label the template with appropriate symbols conduit entry locations.

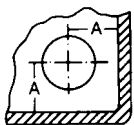
TABLE 2	Drilled and Tapped Conduit Entry Symbol	Union Hub Symbol
Trade Size (Inches)		
½	1	W
¾	2	X
1	3	Y
1¼	4	R
1½	5	S
2	6	T
2½	7	U
3	8	V
3½	9	WD
4	10	XE
None	0	O

TABLE 1 STANDARD CONDUIT ARRANGEMENT



\* For conduit entry or hub on centered rear of enclosure (figure 16) use letter "g" to locate

Drilled and Tapped Conduit Entries	Minimum Space Between Centers of Conduits (Inches)										Union Hubs*
	4	3½	3	2½	2	1½	1¼	1	¾	½	
½	3/8	3/8	3	2½	2½	2	1½	1¼	1½	1½	
¾	3/4	3/2	3½	2¾	2½	2½	2	1½	1¼		
1	4	3½	3¾	3	2½	2½	2¼	2			
1¼	4½	3½	3½	3½	2½	2½	2				
1½	4¼	4	3¾	3¼	3	2½					6¾ 4
2	4¾	4¼	3¾	3¾	3¼						6 3½
2½	4¾	4¾	4¼	3¾							5¾ 3
3	5	5	4¾					5½	5¼	5½	5¾ 2½
								4¾	5¾	5¾	5¾ 2
3½	5	5¼						4½	4¼	4¼	5 1½
4	5½				¾	¾	¾	4½	4½	4½	4¾ 1¼
				¾	¾	¾	¾	4	4½	4½	4¾ 1
			¾	¾	¾	¾	¾	3¾	4½	4½	4¾ ¾
			¾	¾	¾	¾	¾	3¾	4½	4½	4¾ ½
			¾	¾	¾	¾	¾	3¾	4½	4½	4¾ ½
			¾	¾	¾	¾	¾	3¾	4½	4½	4¾ ½
			¾	¾	¾	¾	¾	3¾	4½	4½	4¾ ½



Minimum spacing from sides and back. For drilled and tapped conduit entries and union hubs.

Conduit Trade Size	Minimum Space from Sides and Back (Inches)									
	½	¾	1	1¼	1½	2	2½	3	3½	4
Dimension A*	1	1	1½	1¾	1½	1¾	2½	2½	2½	3½

\* If seals are used, additional clearance may be required. Check dimensions of fittings used

# Hazardous Locations Junction Boxes & Instrument Enclosures

Type GUB, IF, IG, YE, YG Boxes

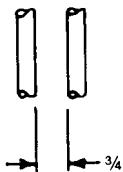
## Drilling and Tapping Guidelines for Spacing Adjacent Conduits

Conduit Dimensions and Enclosure Threading Requirements (All dimensions are in Inches):

Conduit Size	1/2	3/4	1	1 1/4	1 1/2	2	2 1/2	3	3 1/2	4	5	6
No. threads/in. (NPT)	14	14	11 1/2	11 1/2	11 1/2	11 1/2	8	8	8	8	8	8
Actual O.D.	0.840	1.050	1.315	1.660	1.900	2.375	2.875	3.500	4.000	4.500	5.563	6.625
Nominal O.D.	27/32	1 1/16	1 1/32	1 1/16	1 29/32	2 3/8	2 7/8	3 1/2	4	4 1/2	5 9/16	6 5/8
Actual I.D.	0.622	0.824	1.049	1.380	1.610	2.067	2.469	3.068	3.548	4.026	5.047	6.065
Nominal I.D.	5/8	27/32	1 1/16	1 3/8	1 5/8	2 1/16	2 13/32	3 1/16	3 3/16	4 1/32	5 1/16	6 1/16
Min. wall thk. req'd. for 5 full threads (NEMA 7)	3/8	3/8	7/16	7/16	7/16	7/16	5/8	5/8	5/8	5/8	5/8	5/8
Min wall thk. req'd for 3 1/2 full threads (NEMA 4)	1/4	1/4	5/16	5/16	5/16	5/16	7/16	7/16	7/16	7/16	7/16	7/16

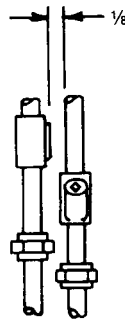
### Conduit Spacing Tables:

Conduit to Conduit



Conduit Size	Conduit Size											
	1/2	3/4	1	1 1/4	1 1/2	2	2 1/2	3	3 1/2	4	5	6
1/2	1 1/8	1 3/4	1 7/8	2	2 1/8	2 3/8	2 7/8	3	3 1/4	3 3/8	4	4 1/4
3/4	--	1 7/8	2	2 1/8	2 3/8	2 7/8	3	3 1/4	3 3/8	4	4 1/4	4 3/8
1	--	--	2 1/8	2 3/8	2 7/8	3	3 1/4	3 3/8	4	4 1/4	4 3/8	4 7/8
1 1/4	--	--	--	2 3/8	2 7/8	3	3 1/4	3 3/8	4	4 1/4	4 3/8	4 7/8
1 1/2	--	--	--	--	2 7/8	3	3 1/4	3 3/8	4	4 1/4	4 3/8	4 7/8
2	--	--	--	--	--	3	3 1/4	3 3/8	4	4 1/4	4 3/8	4 7/8
2 1/2	--	--	--	--	--	--	3 3/8	4	4 1/4	4 3/8	4 7/8	5
3	--	--	--	--	--	--	--	4 1/4	4 3/8	4 7/8	5	5 1/4
3 1/2	--	--	--	--	--	--	--	--	4 3/4	5	5 1/4	5 1/2
4	--	--	--	--	--	--	--	--	--	5 1/4	5 1/2	5 3/4

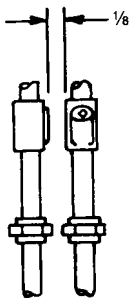
Staggered Seals/Unions



Conduit Size	Conduit Size											
	1/2	3/4	1	1 1/4	1 1/2	2	2 1/2	3	3 1/2	4	5	6
1/2	1 1/8	2	2 1/4	2 1/2	2 5/8	2 7/8	3 1/4	3 3/8	4	4 1/4	4 3/8	4 7/8
3/4	--	2 1/8	2 3/8	2 1/2	2 3/4	3	3 3/8	4	4 1/8	4 3/8	4 7/8	5
1	--	--	2 1/2	2 5/8	2 7/8	3 3/8	3 3/4	4 1/8	4 1/4	4 3/8	4 7/8	5
1 1/4	--	--	--	2 7/8	3 1/4	3 3/8	3 3/4	4 1/8	4 1/4	4 3/8	4 7/8	5
1 1/2	--	--	--	--	3 3/8	3 3/4	3 7/8	4 1/8	4 1/4	4 3/8	4 7/8	5
2	--	--	--	--	--	4	4 1/8	4 1/4	4 3/8	4 7/8	5	5 1/4
2 1/2	--	--	--	--	--	--	4 1/4	4 3/8	4 7/8	5	5 1/4	5 1/2
3	--	--	--	--	--	--	--	5 1/4	5 1/2	5 3/4	6	6 1/4
3 1/2	--	--	--	--	--	--	--	--	5 3/4	6	6 1/4	6 1/2
4	--	--	--	--	--	--	--	--	--	6	6 1/4	6 1/2

Note: Seals will swing

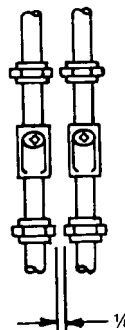
Seal to Seal



Conduit Size	Conduit Size											
	1/2	3/4	1	1 1/4	1 1/2	2	2 1/2	3	3 1/2	4	5	6
1/2	2	2 1/4	2 3/8	2 3/4	3	3 3/8	4	4 1/8	4 3/8	4 7/8	5	5 1/4
3/4	--	2 3/8	2 3/4	3	3 3/4	3 3/8	4 1/4	4 3/8	4 7/8	5	5 1/4	5 1/2
1	--	--	2 3/8	2 3/4	3 3/8	3 3/4	4 1/8	4 3/8	4 7/8	5	5 1/4	5 1/2
1 1/4	--	--	--	3 3/8	3 3/4	3 3/8	4 1/8	4 3/8	4 7/8	5	5 1/4	5 1/2
1 1/2	--	--	--	--	3 3/4	3 3/4	4 1/8	4 3/8	4 7/8	5	5 1/4	5 1/2
2	--	--	--	--	--	4	4 3/8	4 7/8	5	5 1/4	5 1/2	5 3/4
2 1/2	--	--	--	--	--	--	4 3/8	4 7/8	5	5 1/4	5 1/2	5 3/4
3	--	--	--	--	--	--	--	5 1/8	5 1/4	5 1/2	5 3/4	6
3 1/2	--	--	--	--	--	--	--	--	6	6 1/4	6 1/2	6 3/4
4	--	--	--	--	--	--	--	--	--	6 1/4	6 1/2	6 3/4

Note: Seals will swing

Union to Union



Conduit Size	Conduit Size											
	1/2	3/4	1	1 1/4	1 1/2	2	2 1/2	3	3 1/2	4	5	6
1/2	1 1/8	1 3/4	1 7/8	2 1/4	2 1/2	2 3/4	3 1/8	3 3/8	3 3/4	4	4 1/4	4 3/8
3/4	--	1 7/8	2	2 3/8	2 1/2	2 7/8	3 1/8	3 3/8	3 3/4	4	4 1/4	4 3/8
1	--	--	2 1/8	2 1/2	2 3/4	3 1/8	3 3/8	3 3/4	4	4 1/4	4 3/8	4 7/8
1 1/4	--	--	--	2 3/8	2 3/4	3 1/8	3 3/8	3 3/4	4	4 1/4	4 3/8	4 7/8
1 1/2	--	--	--	--	3 1/4	3 3/8	3 3/8	3 3/4	4 1/4	4 1/2	4 3/8	4 7/8
2	--	--	--	--	--	4	4 1/8	4 3/8	4 3/8	4 7/8	5	5 1/4
2 1/2	--	--	--	--	--	--	4 1/4	4 3/8	4 7/8	5	5 1/4	5 1/2
3	--	--	--	--	--	--	--	5 1/4	5 1/2	5 3/4	6	6 1/4
3 1/2	--	--	--	--	--	--	--	--	5 3/4	6	6 1/4	6 1/2
4	--	--	--	--	--	--	--	--	--	6	6 1/4	6 1/2

Note: Seals will not swing

Note: All dimensions are minimum.

Effective May, 2014  
Copyright 2014

# Hazardous Locations Junction Boxes & Instrument Enclosures

Type GUB, IF, IG, YE, YG Boxes

Custom Drill and Tap Schedule

<p>USE FIGURE NO. _____</p> <p>CHECK ONLY IF SHOP IS TO LOCATE</p> <p><input type="checkbox"/> DRAIN ONLY, SIDE</p> <p><input type="checkbox"/> BREATHER &amp; DRAIN SIDES &amp;</p>	<p>* = B&amp;D LOC.</p>	<p>VIEW LOOKING INTO BOX WITH SIDES LAID DOWN</p>	<p>CHECK LIST</p> <p><input type="checkbox"/> ASSIGN DRAWING NO.</p> <p><input type="checkbox"/> SELECT CORRECT FIG. NUMBER.</p> <p><input type="checkbox"/> IF BREATHER &amp; DRAIN ARE REQ'D ARE THEY CLEARLY MARKED AT DESIRED POSITIONS OR IS BOX CHECKED?</p> <p><input type="checkbox"/> ARE INDICATED COND. SIZES WITHIN THE CAT. PUBLISHED MAXIMUM?</p> <p><input type="checkbox"/> CHECK FOR MINIMUM SPACING BETWEEN COND. TO COND. PER COND. SPACING TABLE.</p> <p><input type="checkbox"/> SIGN NAME TO DWG.</p> <p>NAME _____</p> <p>DATE _____</p>																																																																																																																											
<table border="1" style="width: 100%; border-collapse: collapse;"> <thead> <tr> <th style="writing-mode: vertical-rl; transform: rotate(180deg);">POSITION</th> <th style="writing-mode: vertical-rl; transform: rotate(180deg);">CONDUIT SIZE</th> <th style="writing-mode: vertical-rl; transform: rotate(180deg);">X DIM.</th> <th style="writing-mode: vertical-rl; transform: rotate(180deg);">D DIM.</th> <th style="writing-mode: vertical-rl; transform: rotate(180deg);">METAL PLUGS</th> </tr> </thead> <tbody> <tr><td>1</td><td></td><td></td><td></td><td></td></tr> <tr><td>2</td><td></td><td></td><td></td><td></td></tr> <tr><td>3</td><td></td><td></td><td></td><td></td></tr> <tr><td>4</td><td></td><td></td><td></td><td></td></tr> <tr><td>5</td><td></td><td></td><td></td><td></td></tr> <tr><td>6</td><td></td><td></td><td></td><td></td></tr> <tr><td>7</td><td></td><td></td><td></td><td></td></tr> <tr><td>8</td><td></td><td></td><td></td><td></td></tr> <tr><td>9</td><td></td><td></td><td></td><td></td></tr> <tr><td>10</td><td></td><td></td><td></td><td></td></tr> <tr><td>11</td><td></td><td></td><td></td><td></td></tr> <tr><td>12</td><td></td><td></td><td></td><td></td></tr> <tr><td>13</td><td></td><td></td><td></td><td></td></tr> <tr><td>14</td><td></td><td></td><td></td><td></td></tr> <tr><td>15</td><td></td><td></td><td></td><td></td></tr> <tr><td>16</td><td></td><td></td><td></td><td></td></tr> <tr><td>17</td><td></td><td></td><td></td><td></td></tr> <tr><td>18</td><td></td><td></td><td></td><td></td></tr> <tr><td>19</td><td></td><td></td><td></td><td></td></tr> <tr><td>20</td><td></td><td></td><td></td><td></td></tr> <tr><td>21</td><td></td><td></td><td></td><td></td></tr> <tr><td>22</td><td></td><td></td><td></td><td></td></tr> <tr><td>23</td><td></td><td></td><td></td><td></td></tr> <tr><td>24</td><td></td><td></td><td></td><td></td></tr> </tbody> </table>	POSITION	CONDUIT SIZE	X DIM.	D DIM.	METAL PLUGS	1					2					3					4					5					6					7					8					9					10					11					12					13					14					15					16					17					18					19					20					21					22					23					24					<p>* = BREATHER/DRAIN LOC. 1/2" NPT REQUIRED. LOCATION MAY BE SPECIFIED ON THE CHART OR IF BOX IS CHECKED, SHOP WILL LOCATE.</p> <p>DIM. X = DISTANCE FROM CENTERLINE TO CENTER OF CONDUIT OPENING.</p> <p>DIM. D = DISTANCE FROM MTG. SURFACE TO CENTER OF CONDUIT OPENING.</p> <p>HINGED ENCLOSURES WILL BE HINGED ON SIDE "D" AS STANDARD. SPECIAL HINGING ON SIDES A, B, OR C MUST BE SPECIFIED AND MARKED.</p> <p>CAUTION: IN PLANNING CONDUIT ARRANGEMENTS, REFER TO "USABLE CONDUIT AREA", SHOWN ON THE APPROPRIATE PRODUCT OUTLINE DRAWINGS AND TO THE CONDUIT SPACING CHARTS. ON PAGE V30.</p>
POSITION	CONDUIT SIZE	X DIM.	D DIM.	METAL PLUGS																																																																																																																										
1																																																																																																																														
2																																																																																																																														
3																																																																																																																														
4																																																																																																																														
5																																																																																																																														
6																																																																																																																														
7																																																																																																																														
8																																																																																																																														
9																																																																																																																														
10																																																																																																																														
11																																																																																																																														
12																																																																																																																														
13																																																																																																																														
14																																																																																																																														
15																																																																																																																														
16																																																																																																																														
17																																																																																																																														
18																																																																																																																														
19																																																																																																																														
20																																																																																																																														
21																																																																																																																														
22																																																																																																																														
23																																																																																																																														
24																																																																																																																														
<p>ENCLOSURE FIGURES</p> <div style="display: flex; justify-content: space-around;"> <div style="text-align: center;"> <p>FIG. 1</p> </div> <div style="text-align: center;"> <p>FIG. 2</p> </div> <div style="text-align: center;"> <p>FIG. 3</p> </div> <div style="text-align: center;"> <p>FIG. 4</p> </div> <div style="text-align: center;"> <p>FIG. 5</p> </div> </div>		<table style="width: 100%; border-collapse: collapse;"> <tr> <td style="width: 25%;"> <p>TF/TFW443 GUB/GUBSW-443 TF/TFW555 GUB/GUBSW-555 TF/TFW664 GUB/GUBSW-664 GUB/GUBSW-984</p> </td> <td style="width: 25%;"> <p>TF/TFW796 GUB/GUBSW-976 GUB/GUBSW-1093 GUB/GUBSW-10105 TF/TFW10106/8 GUB/GUBSW-10106/B TF/TFW12128/12 GUB/GUBSW-12128/12</p> </td> <td style="width: 25%;"> <p>IF886 IF8128 IF12126 IF12156 IF12186/B/10 IF18186/10 IF18246/10 IF242412</p> </td> <td style="width: 25%;"> <p>YG-040403 THRU YG-363618</p> <p>IF384 IF4103 IF674 IF15145 IF15205</p> <p>IG464 THRU IG303012</p> </td> </tr> </table>	<p>TF/TFW443 GUB/GUBSW-443 TF/TFW555 GUB/GUBSW-555 TF/TFW664 GUB/GUBSW-664 GUB/GUBSW-984</p>	<p>TF/TFW796 GUB/GUBSW-976 GUB/GUBSW-1093 GUB/GUBSW-10105 TF/TFW10106/8 GUB/GUBSW-10106/B TF/TFW12128/12 GUB/GUBSW-12128/12</p>	<p>IF886 IF8128 IF12126 IF12156 IF12186/B/10 IF18186/10 IF18246/10 IF242412</p>	<p>YG-040403 THRU YG-363618</p> <p>IF384 IF4103 IF674 IF15145 IF15205</p> <p>IG464 THRU IG303012</p>																																																																																																																								
<p>TF/TFW443 GUB/GUBSW-443 TF/TFW555 GUB/GUBSW-555 TF/TFW664 GUB/GUBSW-664 GUB/GUBSW-984</p>	<p>TF/TFW796 GUB/GUBSW-976 GUB/GUBSW-1093 GUB/GUBSW-10105 TF/TFW10106/8 GUB/GUBSW-10106/B TF/TFW12128/12 GUB/GUBSW-12128/12</p>	<p>IF886 IF8128 IF12126 IF12156 IF12186/B/10 IF18186/10 IF18246/10 IF242412</p>	<p>YG-040403 THRU YG-363618</p> <p>IF384 IF4103 IF674 IF15145 IF15205</p> <p>IG464 THRU IG303012</p>																																																																																																																											
<p>CONDUIT D&amp;T SCHEDULE</p> <p>CAT. NO. _____</p>		<p>A</p> <p>REV</p>																																																																																																																												