

# USER MANUAL



## PXI RF MULTIPLEXER MODULE (MODEL Nos. 40-740/745/746)



Issue 2, Sep 2005

**© COPYRIGHT (2005) PICKERING INTERFACES. ALL RIGHTS RESERVED.**

No part of this publication may be reproduced, transmitted, transcribed, translated or stored in any form, or by any means without the written permission of Pickering Interfaces.

Technical details contained within this publication are subject to change without notice.

## TECHNICAL SUPPORT

For Technical Support please contact Pickering Interfaces either by phone, fax, the website or via e-mail.

## WARRANTY

All products manufactured by Pickering Interfaces are warranted against defective materials and workmanship for a period of two years, excluding PXI chassis, from the date of delivery to the original purchaser. Any product found to be defective within this period will, at the discretion of Pickering Interfaces be repaired or replaced.

Products serviced and repaired outside of the warranty period are warranted for ninety days.

Extended warranty and service are available. Please contact Pickering Interfaces by phone, fax, the website or via e-mail.

## ENVIRONMENTAL POLICY

Pickering Interfaces operates under an environmental management system similar to ISO 14001.

Pickering Interfaces strives to fulfil all relevant environmental laws and regulations and reduce wastes and releases to the environment. Pickering Interfaces aims to design and operate products in a way that protects the environment and the health and safety of its employees, customers and the public. Pickering Interfaces endeavours to develop and manufacture products that can be produced, distributed, used and recycled, or disposed of, in a safe and environmentally friendly manner.



Observe the Electrical Hazard Warning detailed in Section 9.



Observe the Electrostatic Sensitive Device Caution detailed in Section 9.

## Worldwide Technical Support and Product Information

<http://www.pickeringtest.com>

### Pickering Interfaces Headquarters

Stephenson Road Clacton-on-Sea CO15 4NL United Kingdom

Tel: +44 (0)1255-687900

Fax: +44 (0)1255-425349

E-Mail: [sales@pickeringtest.com](mailto:sales@pickeringtest.com)

Pickering Interfaces Inc.  
2900 Northwest Vine Street  
Grants Pass  
Oregon 97526  
USA

Tel: +1 541 471 0700  
Fax: +1 541 471 8828  
E-Mail: [ussales@pickeringtest.com](mailto:ussales@pickeringtest.com)

Pickering Interfaces Inc.  
(East Coast Regional Office)  
12 Alfred Street Suite 300  
Woburn Massachusetts 01801  
USA

Tel: +1 781 897 1710  
Fax: +1 781 897 1701  
E-mail: [useastsales@pickeringtest.com](mailto:useastsales@pickeringtest.com)

Pickering Interfaces Sarl  
6 Rue de la Mare Blanche  
77186 Noisiel  
Marne La Vallée  
France

Tel +33 1 60 53 55 50  
Fax +33 1 60 53 55 99  
[email frsales@pickeringtest.com](mailto:email frsales@pickeringtest.com)

Pickering Interfaces GmbH  
Buchenstrasse 15  
D-77880  
Sasbach  
Germany

Tel: +49 7841 66 49 10  
Fax: +49 7841 66 49 12  
E-Mail: [desales@pickeringtest.com](mailto:desales@pickeringtest.com)

Pickering Interfaces GmbH  
(Office Munich)  
Am Mitterfeld 33  
D-85622 Weissenfeld  
Germany

Tel: +49 (0) 89 / 235 49 294  
Fax: +49 (0) 89 / 235 49 292  
E-mail: [desales@pickeringtest.com](mailto:desales@pickeringtest.com)

Pickering Interfaces AB  
Karl Nordströmsväg 31  
432 53  
Varberg  
Sweden

Tel: +46 340-69 06 69  
Fax: +46 340-69 06 68  
E-Mail: [ndsales@pickeringtest.com](mailto:ndsales@pickeringtest.com)

Pickering Interfaces s.r.o.  
Smetanova 525  
Třinec  
739 61  
Czech Republic

Tel: +42 0558 339 168  
Fax: +42 0558 340 888  
E-mail: [cesales@pickeringtest.com](mailto:cesales@pickeringtest.com)

THIS PAGE INTENTIONALLY BLANK

# CONTENTS

Copyright Statement .....	ii
Technical Support and Warranty.....	iii
Contents (this page).....	v
<b>Section 1</b>	
Introduction.....	1.1
<b>Section 2</b>	
Technical Specification.....	2.1
<b>Section 3</b>	
Installation.....	3.1
<b>Section 4</b>	
Programming .....	4.1
<b>Section 5</b>	
Connector Pin Outs.....	5.1
<b>Section 6</b>	
Troubleshooting .....	6.1
<b>Section 7</b>	
Functional Description.....	7.1
<b>Section 8</b>	
Parts List.....	8.1
<b>Section 9</b>	
Warnings and Cautions .....	9.1

THIS PAGE INTENTIONALLY BLANK

## SECTION 1 - INTRODUCTION

### GENERAL

The 40-740/745/746 2GHz RF Multiplexer Modules, which form part of the System 40 PXI Programmable Switching system, are a range of Bi-Directional Multiplexers with bandwidths to beyond 2000MHz.

They are arranged as Single 8 to 1, Dual 4 to 1 or Single 4 to 1 configurations and are provided in 50Ω or 75Ω versions with a wide choice of connectors.

Applications for the 40-740/75/46 include routing high frequency signals to and from oscilloscopes, analysers, signal generators and synthesizers, telecoms tributary switching (from 2MBit/s to 155MBit/S), video/audio switching and switching high frequency logic signals.

The modules are provided in the following configurations:

- 4 to 1 RF Multiplexer with automatic termination, 50 Ω BNC Coaxial Connector (40-740-501)
- 4 to 1 RF Multiplexer with automatic termination, 50 Ω SMB Coaxial Connector (40-740-511)
- 4 to 1 RF Multiplexer with automatic termination, 75 Ω BNC Coaxial Connector (40-740-701)
- 4 to 1 RF Multiplexer with automatic termination, 75 Ω SMZ/Type 43 Coaxial Connector (40-740-711)
- 4 to 1 RF Multiplexer with automatic termination, 75 Ω Siemens 1.0/2.3 Version Connector (40-740-731)
- 8 to 1 RF Multiplexer, 50 Ω SMB Coaxial Connector (40-745-511)
- 4 to 1 RF Multiplexer, 75 Ω BNC Coaxial Connector (40-745-701)
- 8 to 1 RF Multiplexer, 75 Ω SMZ/Type 43 Coaxial Connector (40-745-711)
- 8 to 1 RF Multiplexer, 75 Ω Siemens 1.0/2.3 Version Connector (40-745-731)
- Dual 4 to 1 RF Multiplexer, 50 Ω SMB Coaxial Connector (40-746-511)
- Dual 4 to 1 RF Multiplexer, 75 Ω SMZ/Type 43 Coaxial Connector (40-746-711)
- Dual 4 to 1 RF Multiplexer, 75 Ω Siemens 1.0/2.3 Version Connector (40-746-731)



**40-745-701**



**40-746-711**

THIS PAGE INTENTIONALLY BLANK



## SECTION 2 - SPECIFICATION

### RF Relay Type

The 40-740/745/746 is fitted with high reliability RF Relays, these offer long life with good low level switching performance.

**Spare RF Relays** are built onto the circuit board to facilitate easy maintenance with minimum downtime.

### Programming

All PXI cards are supplied with complete Windows 98/2000/NT/XP drivers, these perform the following functions:-

- Write word/s to card (to set relay pattern)
- Write bit to card (to operate an individual relay)
- Full relay status reporting
- Card identification and location information

Up to date driver software is available from our web site at [www.pickeringtest.com](http://www.pickeringtest.com)

### Power Requirements

+3.3V	+5V	+12V	-12V
0	320mA (typ 240mA)	0	0

### Width and Dimensions

Single slot 3U PXI (CompactPCI card).

### PXI & CompactPCI Compliance

All Pickering Interfaces PXI cards comply with the PXI Specification 2.1. Local Bus, Interrupts, Trigger Bus and Star Trigger are not implemented.

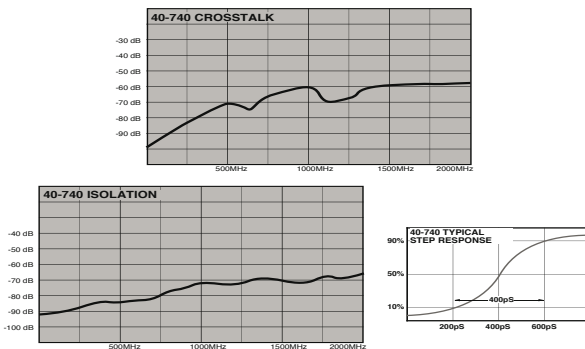
Supplied soft front panels and driver software are fully Windows 98/2000/NT/XP compatible.

### Safety & CE Compliance

All modules meet applicable EU directives. Low-voltage safety EN 61010-1:1993. EMC Immunity EN 50082-1:1992, Emissions EN 55011:1991. For full safety, compliance and environmental specifications refer to Operating Manual.

### Connectors

PXI bus via 32 bit P1/J1 backplane connector. Signals via front panel mounted coaxial connectors.



Additional RF Performance Plots for 40-740/45/46 (50Ω version)



### General Specification (All Versions)

Maximum Voltage:	50V d.c.
Maximum Power:	10W
Maximum Carry Power (900MHz):	15W
Maximum Switch Current:	0.1A
On Path Resistance:	<500mΩ
Off Path Resistance:	>10 <sup>8</sup> Ω
Differential Thermal Offset:	<20μV
Expected Life (Low Power):	>2x10 <sup>7</sup> operations
Expected Life (Max Power):	>3x10 <sup>5</sup> operations
Switching Time:	5ms

### Isolation and Crosstalk Specification

Isolation (0 to 2000MHz):	>40dB
Crosstalk (0 to 2000MHz):	>50dB

### 50Ω Specification (except BNC versions)

Maximum Frequency:	2000MHz
Rise Time:	<0.2ns
Insertion Loss:	<3dB
VSWR (0 to 2000MHz):	<1:1.7

### 75Ω Specification (except BNC versions)

Maximum Frequency:	2000MHz
Rise Time:	<0.3ns
Insertion Loss:	<3dB
VSWR (0 to 1000MHz):	<1:1.8

### 75Ω Specification (50Ω & 75Ω BNC versions)

Maximum Frequency:	1000MHz
--------------------	---------

### Product Order Codes

#### 4 to 1 RF Multiplexer With Automatic Termination

50Ω, SMB Connector, 2GHz	<b>40-740-511</b>
50Ω, SMA Connector, 2GHz	<b>40-740-521</b>
75Ω, SMZ/Type 43 Connector, 2GHz	<b>40-740-711</b>
75Ω, Siemens 1.0/2.3 Connector, 2GHz	<b>40-740-731</b>
75Ω, Mini SMB Connector, 2GHz	<b>40-740-751</b>

#### 4 to 1 RF Multiplexer

50Ω, BNC Connector, 1GHz	<b>40-745-501</b>
50Ω, SMB Connector, 2GHz	<b>40-745-591</b>
75Ω, BNC Connector, 1GHz	<b>40-745-701</b>

#### 8 to 1 RF Multiplexer

50Ω, SMB Connector, 2GHz	<b>40-745-511</b>
50Ω, SMA Connector, 2GHz	<b>40-745-521</b>
75Ω, SMZ/Type 43 Connector, 2GHz	<b>40-745-711</b>
75Ω, Siemens 1.0/2.3 Connector, 2GHz	<b>40-745-731</b>
75Ω, Mini SMB Connector, 2GHz	<b>40-745-751</b>

#### Dual 4 to 1 RF Multiplexer

50Ω, SMB Connector, 2GHz	<b>40-746-511</b>
50Ω, SMA Connector, 2GHz	<b>40-746-521</b>
75Ω, SMZ/Type 43 Connector, 2GHz	<b>40-746-711</b>
75Ω, Siemens 1.0/2.3 Connector, 2GHz	<b>40-746-731</b>
75Ω, Mini SMB Connector, 2GHz	<b>40-746-751</b>

-C Alternative connectors may be available, please consult factory.

### Mating Connectors & Cabling

Please refer to the Pickering Interfaces "Interconnection Solutions" catalog for a full list of connector/cabling options, including drawings, photos and specifications. This is available in either print or as a download.

Alternatively our web site has dynamically linked connector/cabling options, including pricing, for all Pickering PXI modules.

### Latest Details

Please refer to our Web Site for Latest Product Details. [www.pickeringtest.com](http://www.pickeringtest.com)

THIS PAGE INTENTIONALLY BLANK

## SECTION 3 - INSTALLATION

### SOFTWARE INSTALLATION

First install the appropriate Pickering PXI switch card drivers by running the installer program Setup.exe, either from the CD-ROM supplied, or by downloading the latest version from our website <http://www.pickeringtest.com> - the recommended method. There are different versions of the Setup program to suit different Windows versions and software environments. Setup is accompanied by a ReadMe file containing additional installation information. A single installation covers all cards in the System 40, System 45 and System 50 ranges.

When installation completes, the installed drivers' ReadMe file is offered for display. It can also be displayed later using a shortcut on the Programs>>Pickering menu.

If you are not a LabVIEW user you should choose the "full" version, and once that has been installed run the LabVIEW Runtime Engine installer via the shortcut on the Programs>>Pickering menu. In the absence of LabVIEW the Runtime Engine is required to support the Pickering Test Panels application.

### HARDWARE INSTALLATION

#### CAUTION

Electrostatic discharge can damage the components on the module. To avoid such damage in handling the board, touch the anti-static bag to a metal part of the chassis before removing the board from the bag.

Ensure that there is adequate ventilation in accordance with the PXI Specification.

The module should be installed in accordance with the following procedure:

1. Ensure that the system is turned OFF but still connected to mains so that it remains grounded.
2. Choose an appropriate slot in the rack.
3. Remove the blanking plate for the chosen slot.
4. Ensure that the injector/ejector handle is in its downward position. Align the module with the card guides on the top and bottom of the slot.

#### CAUTION

Do not raise the injector/ejector handle whilst inserting the module. The module will not insert properly unless the handle is in its downward position.

5. Hold the handle whilst slowly sliding the module into the card guides until the handle catches on the injector/ejector rail (refer to Figure 3.1).
6. Raise the injector/ejector handle until the module firmly seats into the backplane. The front panel of the module should be flush with the front panel of the chassis.
7. Screw the front panel of the module to the front panel mounting rail.
8. In a system employing MXI-3 to connect a desktop PC to a PXI chassis or to link multiple chassis, power-up the system as follows:
  - a. For a system comprising a PC and one chassis, power up the chassis before powering up the PC.
  - b. For a system comprising more than one chassis, turn ON the last chassis in the system followed by the penultimate, etc, and finally turn ON the PC or chassis containing the system controller.

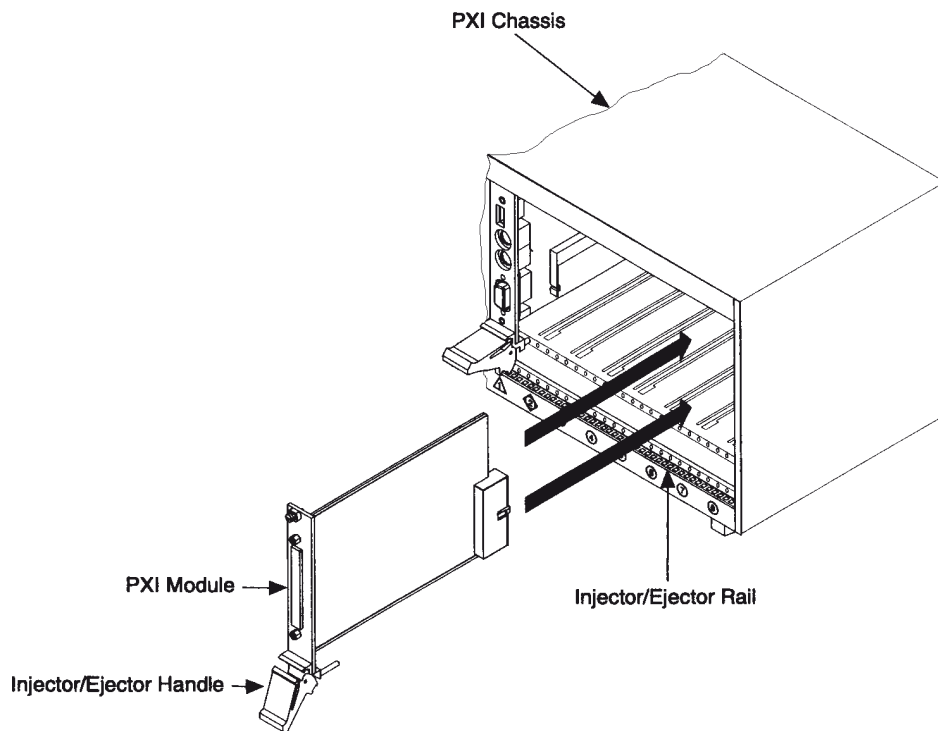


Figure 3.1 - Installing the module into a PXI/Compact PCI Chassis

## TESTING OPERATION

Start the Test Panels application from the Programs>>Pickering>>PXI Utilities menu. If you are a LabVIEW user, run "Test Panels (LabVIEW VI)"; if not, run "Test Panels (EXE)". A selector panel will appear, listing all installed Pickering PXI switch cards. Click on the card you wish to control, and a graphical control panel is presented allowing operation of the card. Panels can be opened simultaneously for all the installed cards.

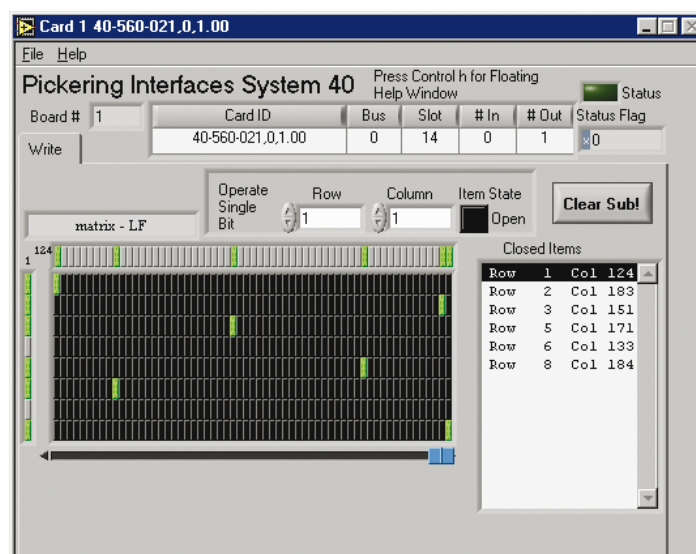


Figure 3.2 - Typical Test Panel Display

As an alternative to the Test Panels, the simple Terminal Monitor program PILMon (again on the Programs>>Pickering>>PXI Utilities menu) allows access to all functions of Pickering switch cards through a command-line interface. In PILMon, enter "HE" for help on it's commands.

Please note that both the Test Panels and Terminal Monitor gain exclusive access to the cards, and so only one of them can be operational at any time.

THIS PAGE INTENTIONALLY BLANK

## SECTION 4 - PROGRAMMING

System 40, System 45 and System 50 cards are supported by comprehensive Windows software drivers and can also be programmed at register-level.

There are two separate Windows drivers, one accessing cards by Direct I/O and the other through VISA (Virtual Instrument Software Architecture). Both are fully documented by ReadMe and HTML help files, accessible through shortcuts on the Programs>>Pickering menu.

The following programming environments are supported for both drivers:

- Microsoft Visual Basic
- Microsoft Visual C++
- Borland C++
- National Instruments LabWindows/CVI
- National Instruments LabVIEW

Support for all these environments is included in the standard installation.

Please refer to the PXI Switching Programming Manual for complete programming information. This manual is available on the Pickering Interfaces website at <http://www.pickeringtest.com>.

THIS PAGE INTENTIONALLY BLANK



## SECTION 5 - CONNECTOR PIN OUTS

Figure 5.1 provides pin outs for the RF Multiplexer Modules in the 40-740/745/746 model range.

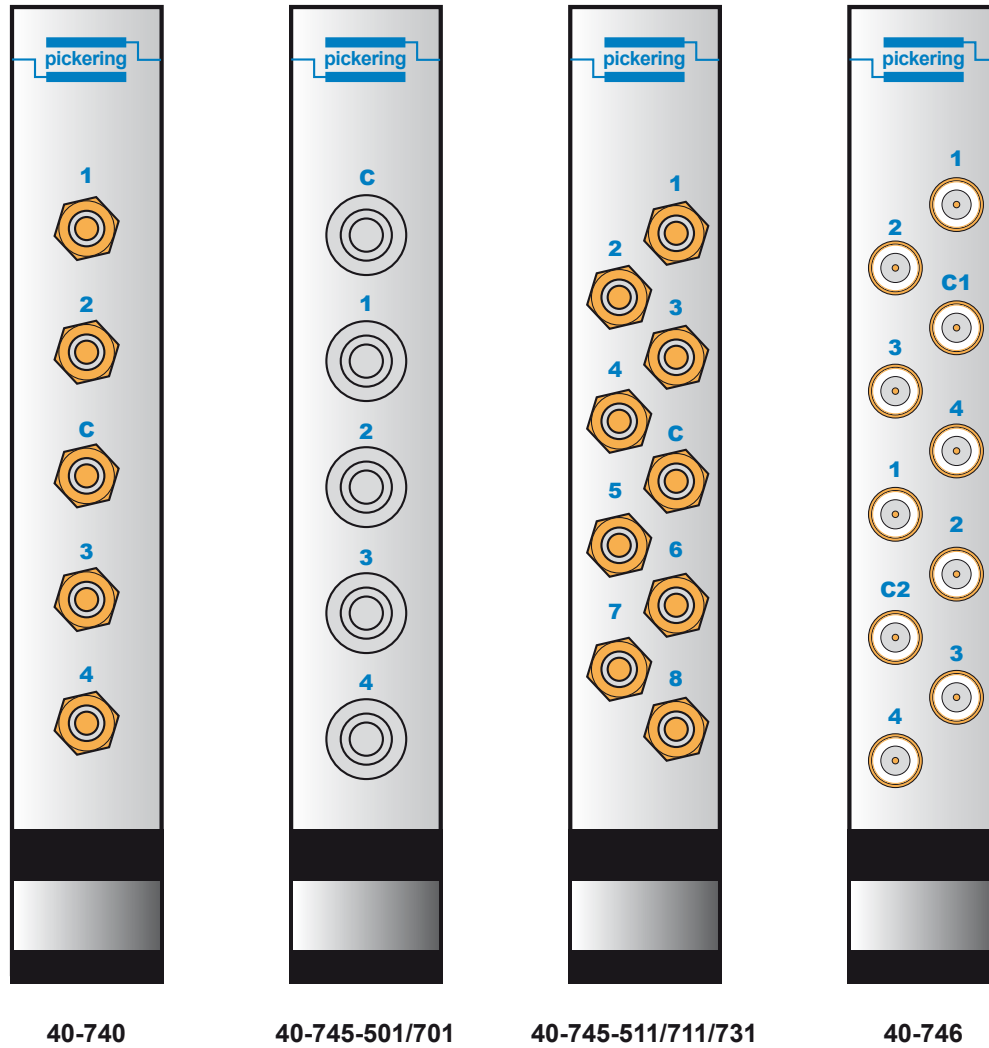


Figure 5.1 - RF Multiplexer Modules 40-740/745/746: Pin Outs

THIS PAGE INTENTIONALLY BLANK

## SECTION 6 - TROUBLESHOOTING

### INSTALLATION PROBLEMS

The Plug & Play functionality of Pickering switch cards generally ensures trouble-free installation.

If you do experience any installation problems you should first ensure that all cards are properly seated in their slots. Improperly mated cards may go undetected by the operating system, or may be detected as a card of an unknown type. They can also cause the computer to freeze at various stages in the boot sequence.

If your system employs MXI-3 you should check the integrity of all MXI-3 links. When the system is powered up, and during Windows start-up, you should expect to see periodic activity on the MXI-3 RX/TX (yellow) indicators, clearing to leave only the PWR/LNK (green) LEDs illuminated. The RX/TX indicators should show activity when you attempt to access a card.

### DIAGNOSTIC UTILITY

The Pickering Diagnostic Utility (accessible through the Programs>>Pickering>>PXI Utilities menu) generates a diagnostic report of the system's PCI configuration, highlighting any potential configuration problems. Specific details of all installed Pickering switch cards are included. All the installed Pickering switch cards should be listed in the "Pilpxi information" section - if one or more cards is missing it may be possible to determine the reason by referring to the PCI configuration dump contained in the report, but interpretation of this information is far from straightforward, and the best course is to contact Pickering support: [support@pickeringtest.com](mailto:support@pickeringtest.com), if possible including a copy of the diagnostic report.

In the "VISA information" section, if VISA is not installed it's absence will be reported. This does not affect operation using the Direct I/O driver, and is not a problem unless you wish to use VISA. VISA is a component of National Instruments LabWindows/CVI and LabVIEW, or is available as a standalone environment.

If VISA is present and is of a sufficiently recent version, the section "Pipx40 information" should present a listing similar to "Pilpxi information".

Please note that the Diagnostic Utility cannot access cards if they are currently opened by some other application, such as the Test Panels or Terminal Monitor.

THIS PAGE INTENTIONALLY BLANK

## SECTION 7 - FUNCTIONAL DESCRIPTION

### MECHANICAL DESCRIPTION

The RF Multiplexer Module conforms to the 3U height (128mm) Eurocard standard and comprises the following:

- CPCI Ejector Handle
- Front Panel mounted 50Ω SMA or SMB connectors, 75Ω SMZ/Type 43 connectors or Siemens 1.0/2.3 connectors
- Seven (40-740), eight (40-745), or six (40-746) RF Relays
- One spare RF Relay
- Compact PCI backplane connector
- PCI Bridge (U1)
- Control Logic

The front panel is secured to the PCB by two M2.5 x 6mm pan-head posi-drive screws.



**40-745-701**



**40-746-711**

FUNCTIONAL DESCRIPTION

A functional block diagram is provided in Figure 7.1. The RF Multiplexer Module is powered by +12V and +5V inputs via Compact PCI connector J1. The interface to the user test equipment is via the front panel mounted SMB, SMZ/Type 43, or Siemens 1.0/2.3 Version connectors. The module comprises a PCB populated with changeover RF relays. The relays are energised via control signals from relay driver U10. The relay driver is addressed by PCI bridge U1, via output register U8, to output the required signal. PCI Bridge U1 is configured by EEPROM U2.

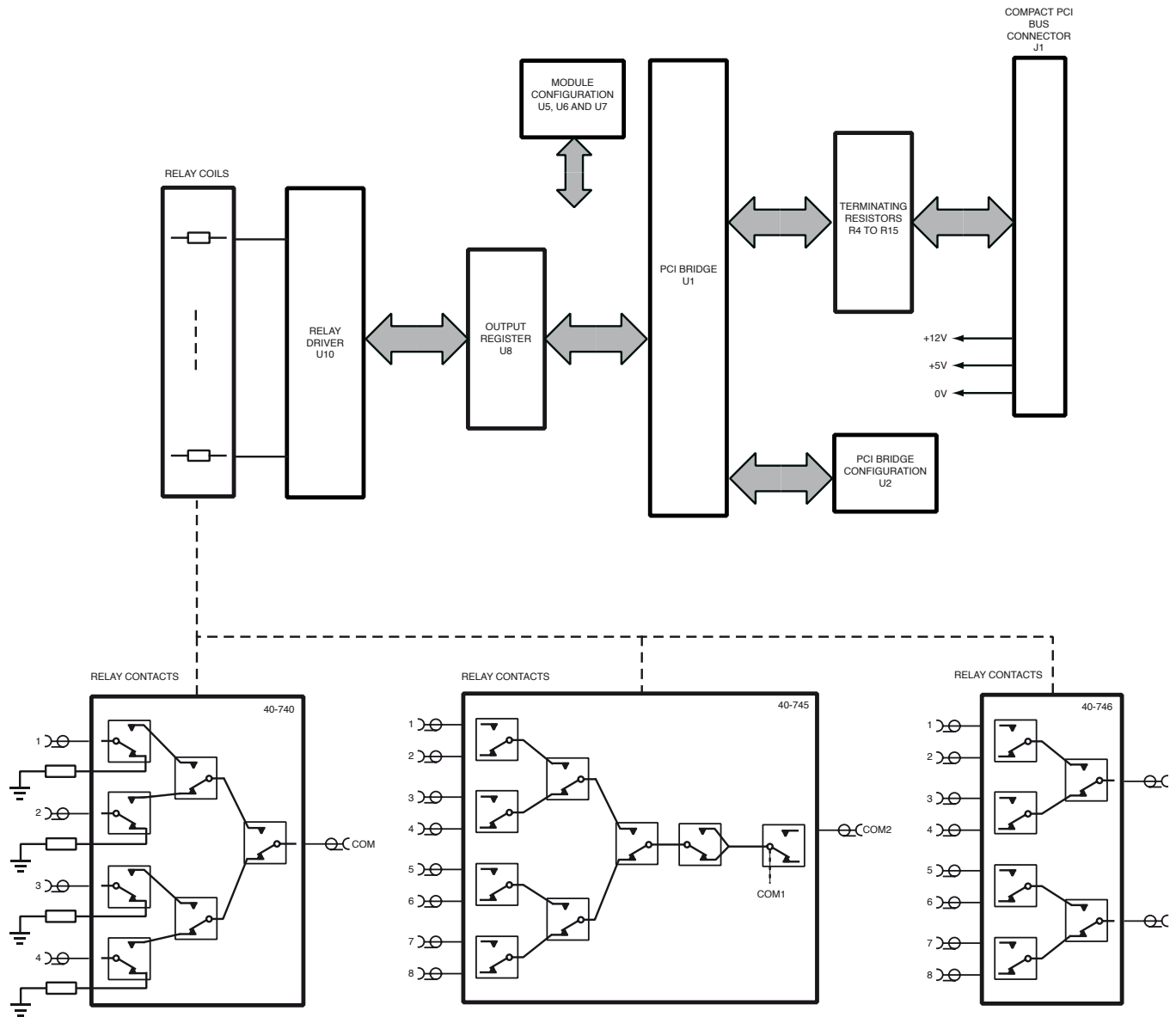


Figure 7.1 - RF Multiplexer Module: Functional Block Diagram

## SECTION 8 - PARTS LIST

The following pages provide parts lists and component layout diagrams for the RF Multiplexer Modules.

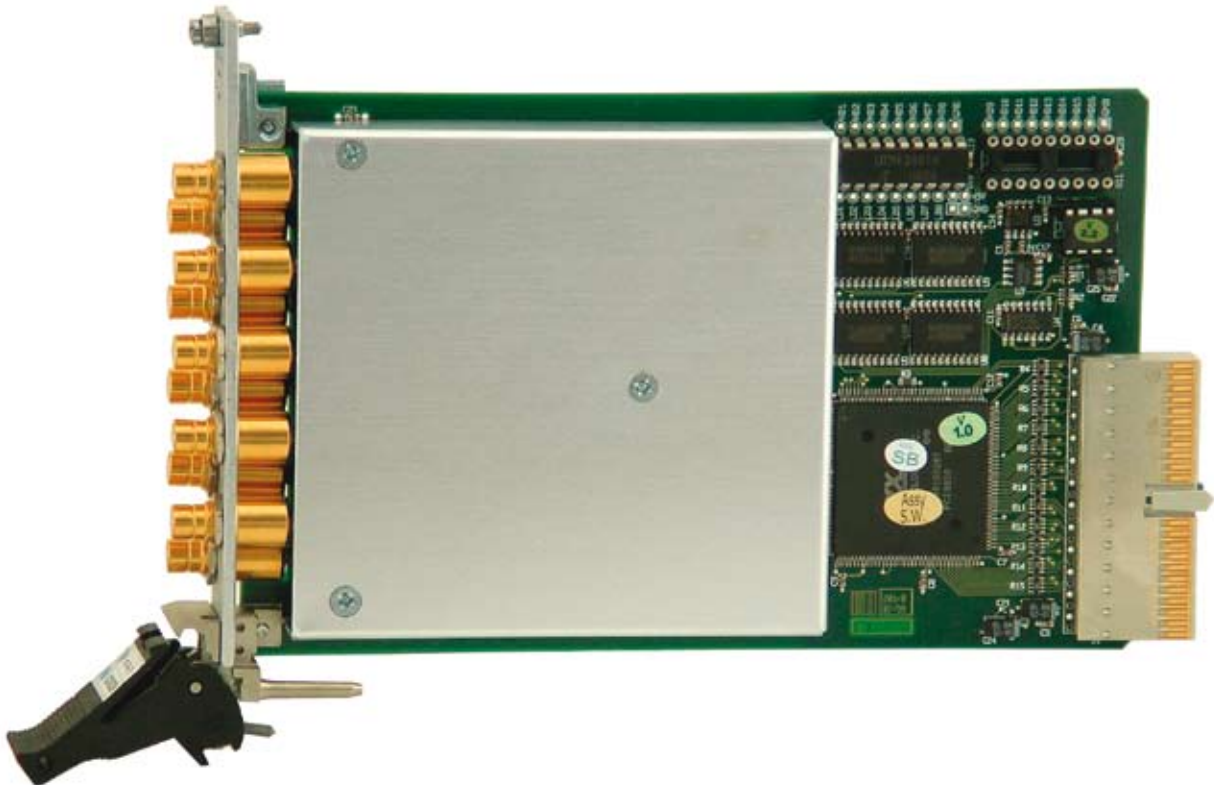


Table 8.1 provides a parts list and Figure 8.1 a component layout diagram for the 40-740 Multiplexer Module.

**TABLE 8.1 - RF Multiplexer Modules 40-740 Parts List**

PCB Location	Pickering Interfaces Part Number	Part Description	Quantity
R1, R2	C/RS/079	RESISTOR N/W 4 x 10k 1206	2
R3	C/RS/085	RESISTOR 10k 0805	1
R4 to R15	C/RS/102	RESISTOR N/W 4 x 10R 1206	12
RL5 to RL11, RL20 (Spare)	C/RL/094	RF RELAY	8
C1, C2, C5 to C23	C/CP/034	CAPACITOR 100nF 0603	21
C3, C4, C24, C25	C/CP/024	CAPACITOR 10uF TANT SMD	4
J1	C/CN/355	cPCI J1 CONNECTOR	1
U1	C/IC/098	PCI9050 PQFP	1
U2	C/IC/099	93CS46 DIP	1
	C/IC/035	8 PIN DIP SKT	1
U3	C/IC/056	7705 SOP	1
U4	C/IC/087	74HCT32 SOP	1
U5, U8, U9	C/IC/100	74HCT273 SOP	3
U6	C/IC/101	74HCT244 SOP	1
U7	C/IC/090	93C56 SOP	1
U10	C/IC/038	UDN2981A	1



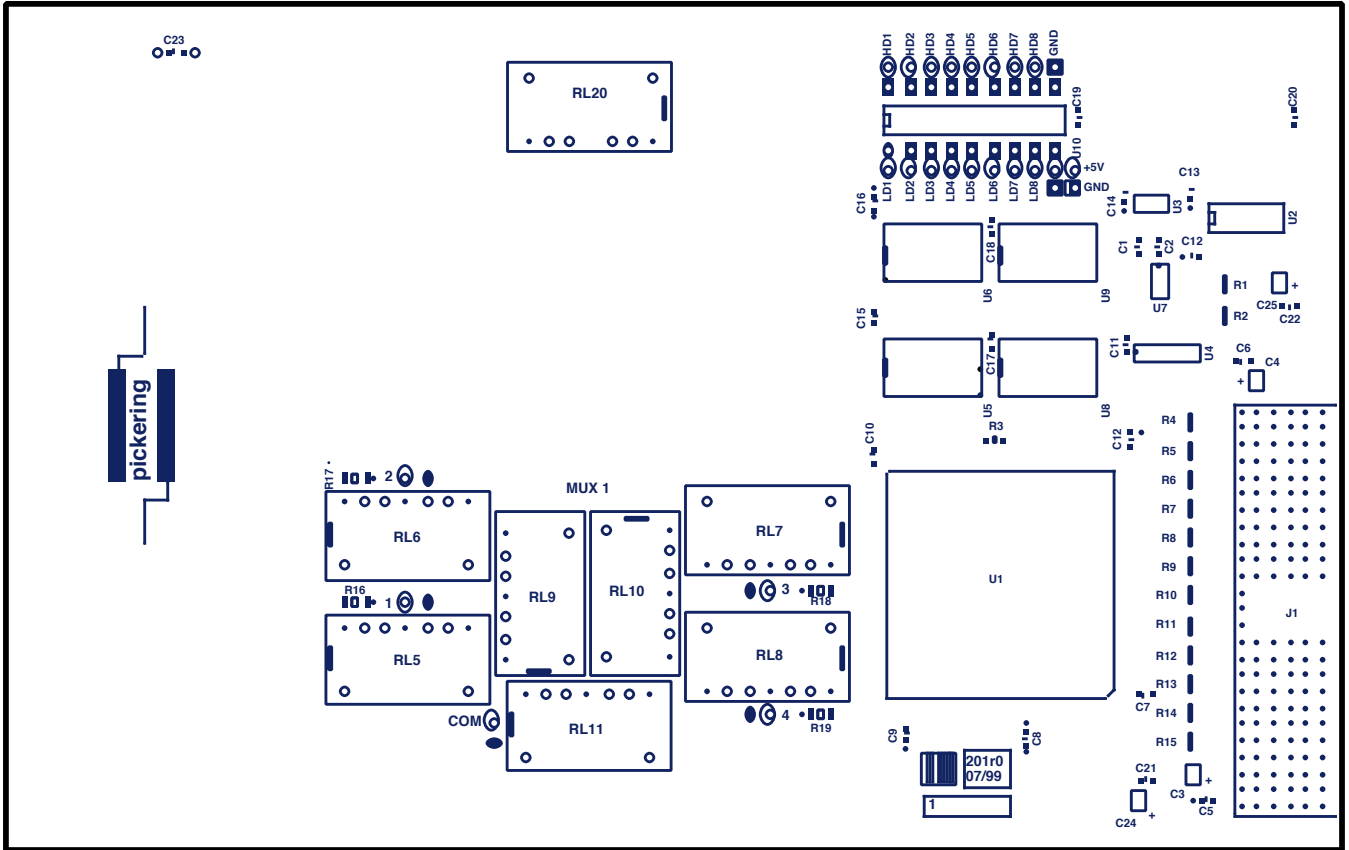


Figure 8.1 - RF Multiplexer Module 40-740: Component Layout

THIS PAGE INTENTIONALLY BLANK

**SECTION 9 - WARNINGS AND CAUTIONS****WARNING - DANGER OF ELECTRIC SHOCK**

**THIS MODULE MAY CONTAIN HAZARDOUS VOLTAGES. BEFORE REMOVING THE MODULE FROM THE RACK REMOVE ALL SUPPLIES.**

**CAUTION****Handling of Electrostatic-Sensitive Semiconductor Devices**

Certain semiconductor devices used in the equipment are liable to damage due to static voltage. Observe the following precautions when handling these devices in their unterminated state, or sub-units containing these devices:

- (1) Persons removing sub-units from an equipment using these devices must be earthed by a wrist strap and a resistor at the point provided on the equipment.
- (2) Soldering irons used during the repair operations must be low voltage types with earthed tips and isolated from the mains voltage by a double insulated transformer.
- (3) Outer clothing worn must be unable to generate static charges.
- (4) Printed Circuit Boards (PCBs) fitted with these devices must be stored and transported in anti-static bags.

THIS PAGE INTENTIONALLY BLANK