



## Artisan Technology Group is your source for quality new and certified-used/pre-owned equipment

- FAST SHIPPING AND DELIVERY
- TENS OF THOUSANDS OF IN-STOCK ITEMS
- EQUIPMENT DEMOS
- HUNDREDS OF MANUFACTURERS SUPPORTED
- LEASING/MONTHLY RENTALS
- ITAR CERTIFIED SECURE ASSET SOLUTIONS

### SERVICE CENTER REPAIRS

Experienced engineers and technicians on staff at our full-service, in-house repair center

### *InstraView*<sup>SM</sup> REMOTE INSPECTION

Remotely inspect equipment before purchasing with our interactive website at [www.instraview.com](http://www.instraview.com) ↗

### WE BUY USED EQUIPMENT

Sell your excess, underutilized, and idle used equipment. We also offer credit for buy-backs and trade-ins. [www.artisanng.com/WeBuyEquipment](http://www.artisanng.com/WeBuyEquipment) ↗

### LOOKING FOR MORE INFORMATION?

Visit us on the web at [www.artisanng.com](http://www.artisanng.com) ↗ for more information on price quotations, drivers, technical specifications, manuals, and documentation

**Contact us:** (888) 88-SOURCE | [sales@artisanng.com](mailto:sales@artisanng.com) | [www.artisanng.com](http://www.artisanng.com)

# FeliX32™ Software & BryteBox™ Interface

With its own Central Processing Unit and memory, the **BryteBox™** can control virtually every PTI fluorescence acquisition product, including monochromators, photomultipliers, choppers, shutters and our NEW computer controlled slit assemblies. It also has the capability to control selected non-PTI products such as titrators, water baths and cryostats. In addition, alternate non-PTI monochromators can be controlled with the **BryteBox™**.

The **BryteBox™** interfaces to your PC based computer through a dedicated 10 MHz ethernet connection. With a special adaptor it also has the capability to communicate through a USB port. It can be controlled with a laptop computer through USB or PCMCIA, allowing data acquisition in areas where space is limited.



Since this new system concept separates the "speed critical data acquisition electronics" from the host PC, there is NO need for an interface card to be plugged into the host computer bus. The host computer runs a controlling program and communicates instructions to the **BryteBox**. This process off loads the critical data acquisition tasks and frees up the host PC's processor. Since no data capture boards are on the host PC bus, hardware conflicts have essentially been eliminated, thus stabilizing the remote data capture system. [Technical Specifications](#)

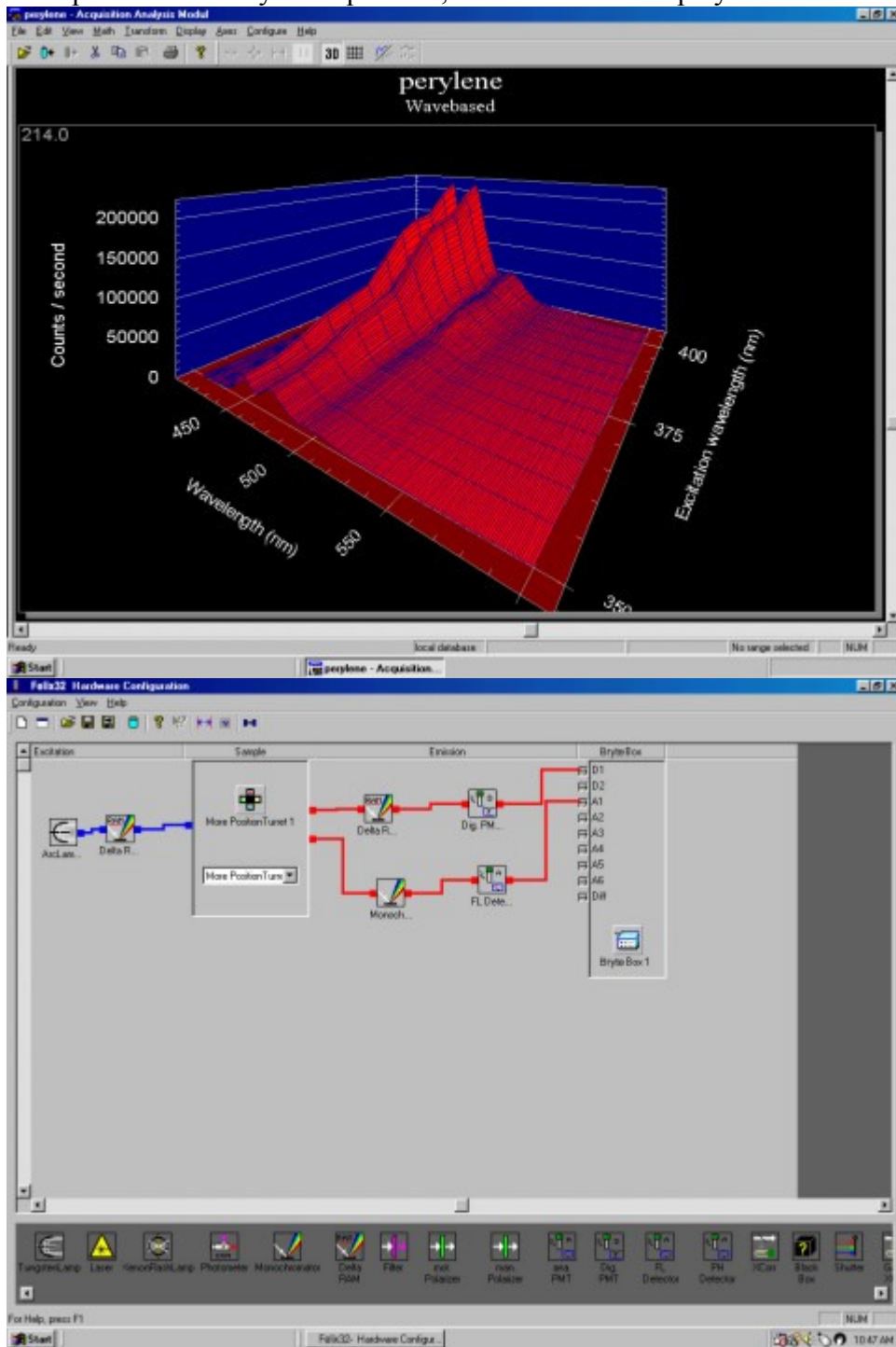
Major improvements have been made to the original **FeliX** software, a standard which is being used by thousands of researchers worldwide. Considering the vast number of improvements which have been incorporated, we are now releasing this software package as FeliX32.

**FeliX32** is compatible with Windows 98, Windows 2000, Windows NT-4 and Windows XP operating systems. The database structure has been greatly improved, allowing for multi user instrument environments. **FeliX32** is also the controlling software for the **BryteBox** interface.

**FeliX32** uses full 32-bit implementation with improved graphics capabilities, including

sophisticated 3-dimensional plotting and full motion rotation. All major data handling packages are included: multi-exponential fits, global analysis, non-exponential analysis, anisotropy decay as well as maximum entropy methods.

**Felix32** also uses script controlled data acquisition, so specialized experimental routines can be easily created by the end user **Felix32** macro commands. This allows for unsurpassed flexibility in acquisition, calculation and display of data.



**3 Dimensional Viewing Capabilities**

**Easy-to-use Hardware Configuration**

### BryteBox™ Technical Specifications

<b>Operating Voltage</b>	85-264VAC (47-440 Hz) 120-70VDC
<b>Operating temperature</b>	0 to 40 C

<b>Weight</b>	5.9 kg
<b>Dimensions</b>	360 (W) x 160 (H) x 315 mm (D)
<b>Analog Inputs</b>	
Differential Analog In (Input range)	$\pm 50\text{mV}$ ; $\pm 500\text{mV}$ ; $\pm 100\text{mV}$ ; $\pm 1\text{V}$ (selectable)
Signal In; A1-A6 (Input Range)	$\pm 5\text{V}$ ; $\pm 10\text{V}$ ; (selectable)
<b>ADC Parameters</b>	
Resolution	12Bit
Relative Accuracy	$\pm 1/2 \pm \text{LSB}$ (max.)
Gain Error	$\pm 3\text{LSB}$ (max.)
Bipolar Zero Error	$\pm 4\text{LSB}$ (max.)
Conversion Time	1.65 $\mu\text{s}$ per Channel
Throughput Time	130 kSPS For 4 Channels
<b>Analog Outputs</b>	
Resolution	12Bit
Output range	-5V to +5V; 0 to +5V; 0 to .5V (selectable)
Relative Accuracy	$\pm 1\text{SB}$ (max.)
Gain Error	$\pm 2\text{LSB}$ (max.)
Offset Error	$\pm 5\text{LSB}$ (max.)
<b>Data Acquisition Rate</b>	1500 Data points per second
<b>Communication</b>	
Rs232	Standard: supporting RTS/CTS Handshake
Ethernet	10 Mbps Ethernet (10 Base-T)
<b>TTL Inputs</b>	
D1, D2	
Input Level	Standard LS-TTL /w 0.4 V Hysteresis 50 Ohm Line Termination (selectable)
Counter Width	32 Bit
Hold Off	0 - 5100 ns (software setting)
Detector Saturation	0 - 5100 ns (software setting)
Max. Frequency	1/HoIdOff to 25MHz (= 1/2 Fs)
TTL In 1; TTL In 2; MD5020 Calibration Flag; Chopper Trigger; Extern Trigger ADC1; Extern Trigger ADC2	
Input Level	Standard LS-TTL /w 0.4 V Hysteresis > 10KHz (Software polling)
Max. Frequency	
<b>High Speed TTL IN</b>	
Input Level	Standard LS-TTL /w 0.4 V Hysteresis Programmable Interrupt driven
Special support	Pos./neg. edge or level

**TTL Outputs**

TTL Out 1; TTL Out 2; Shutter 1-4

Standard LS-TTL Output

Output Level

Strobe Detector Pulse  
Generator Signals

Standard LS-TTL Output

20ns

Output Level

32 Bit

Timing Resolution

86 sec.

Counter Width

Max. Pulse Width



## Artisan Technology Group is your source for quality new and certified-used/pre-owned equipment

- FAST SHIPPING AND DELIVERY
- TENS OF THOUSANDS OF IN-STOCK ITEMS
- EQUIPMENT DEMOS
- HUNDREDS OF MANUFACTURERS SUPPORTED
- LEASING/MONTHLY RENTALS
- ITAR CERTIFIED SECURE ASSET SOLUTIONS

### SERVICE CENTER REPAIRS

Experienced engineers and technicians on staff at our full-service, in-house repair center

### *InstraView*<sup>SM</sup> REMOTE INSPECTION

Remotely inspect equipment before purchasing with our interactive website at [www.instraview.com](http://www.instraview.com) ↗

### WE BUY USED EQUIPMENT

Sell your excess, underutilized, and idle used equipment. We also offer credit for buy-backs and trade-ins. [www.artisanng.com/WeBuyEquipment](http://www.artisanng.com/WeBuyEquipment) ↗

### LOOKING FOR MORE INFORMATION?

Visit us on the web at [www.artisanng.com](http://www.artisanng.com) ↗ for more information on price quotations, drivers, technical specifications, manuals, and documentation

**Contact us:** (888) 88-SOURCE | [sales@artisanng.com](mailto:sales@artisanng.com) | [www.artisanng.com](http://www.artisanng.com)