



## Artisan Technology Group is your source for quality new and certified-used/pre-owned equipment

- FAST SHIPPING AND DELIVERY
- TENS OF THOUSANDS OF IN-STOCK ITEMS
- EQUIPMENT DEMOS
- HUNDREDS OF MANUFACTURERS SUPPORTED
- LEASING/MONTHLY RENTALS
- ITAR CERTIFIED SECURE ASSET SOLUTIONS

### SERVICE CENTER REPAIRS

Experienced engineers and technicians on staff at our full-service, in-house repair center

### *InstraView*<sup>SM</sup> REMOTE INSPECTION

Remotely inspect equipment before purchasing with our interactive website at [www.instraview.com](http://www.instraview.com) ↗

### WE BUY USED EQUIPMENT

Sell your excess, underutilized, and idle used equipment. We also offer credit for buy-backs and trade-ins. [www.artisanng.com/WeBuyEquipment](http://www.artisanng.com/WeBuyEquipment) ↗

### LOOKING FOR MORE INFORMATION?

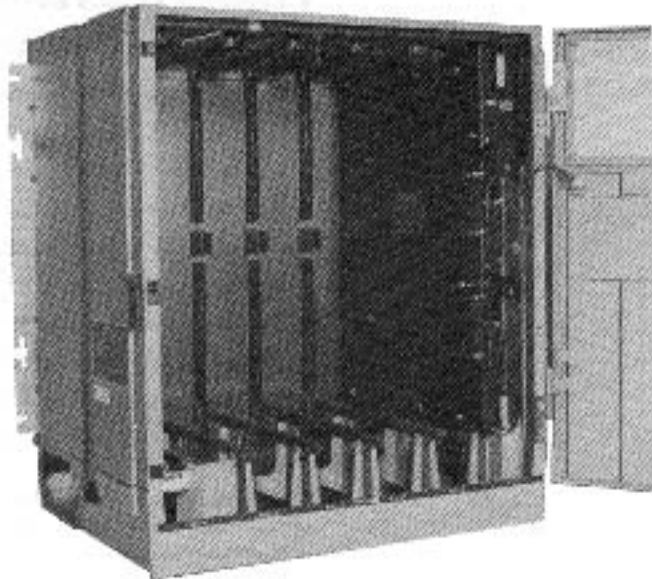
Visit us on the web at [www.artisanng.com](http://www.artisanng.com) ↗ for more information on price quotations, drivers, technical specifications, manuals, and documentation

**Contact us:** (888) 88-SOURCE | [sales@artisanng.com](mailto:sales@artisanng.com) | [www.artisanng.com](http://www.artisanng.com)



## **Allen-Bradley PLC-3 Expansion System**

### Product Data



### **System Hardware**

PLC-3 programmable controllers can be expanded to include as many as four processor chassis. Expansion increases the number of available module slots, allowing a PLC-3 system to be economically configured to meet many application needs, while leaving open the option for future expansion. The PLC-3 expansion system includes the following available hardware:

- PLC-3 Expansion Chassis (cat. no. 1775-A2)
- PLC-3 Expansion Modules (cat. no. 1775-LX): one per processor chassis
- PLC-3 Expansion Terminators (cat. no. 1775-CXT): only required in a three processor chassis system.
- PLC-3 Expansion Distribution panel (cat. no. 1775-CXD): only required in three and four processor chassis systems.

- PLC-3 Expansion Cable Set (cat. no. 1775-CX): one for a two processor chassis system, three for a three processor chassis system, and four for a four processor chassis system.

## **System Benefits**

Expansion adds many benefits to a PLC-3 system:

- Added module slots
- Economically configured
- Four chassis expansion at anytime
- Minimal limitations on module placement
- Expansion modules are transparent to the system
- No additional I/O wiring or programming

## **PLC-3 Expansion Chassis**

The PLC-3 expansion chassis consists of the following parts:

- Chassis (cat. no. 1775-AC)
- Expansion Chassis Door (cat. no. 1775-AD2)
- Chassis Power Cable (cat. no. 1775-CAP)

Features of the expansion chassis include:

- Heavy duty aluminum construction
- Six module slots
- Virtually slot independent module placement
- Free flow convection cooling
- Electro-mechanical interlock to guard against removal or insertion of modules while power is applied to the chassis

The expansion chassis is identical to the PLC-3 main chassis, except that the main chassis has a front panel that contains an alphanumeric display and keypad.

## Chassis Identification for Communication

In a multi-chassis PLC-3 programmable controller system, a chassis identification number is necessary for communication. This is accomplished by setting three switches on the backplane of each main and expansion chassis. Table A shows the proper switch settings for each chassis. Chassis are numbered sequentially starting with zero, with higher priority chassis being assigned lower numbers. Therefore, the main processor module (cat. no. 1775-L1, -L2) is always located in chassis 0, the highest priority chassis.

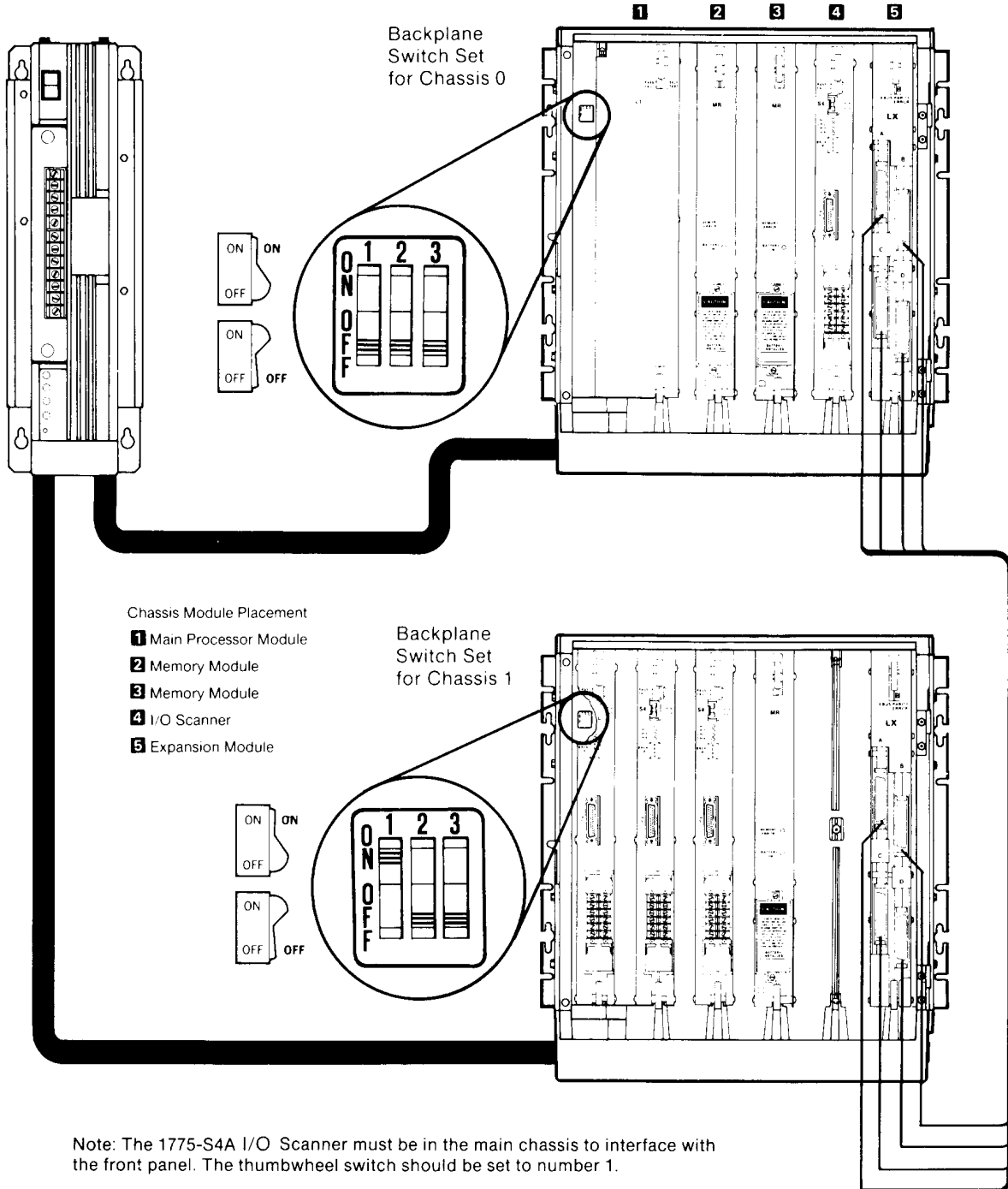
**Table A**  
**Backplane Switch Settings**

Chassis Number	Comments	Switch Settings
0	Highest Priority - Must contain main processor module	<b>1</b> <b>2</b> <b>3</b> OFF   OFF   OFF
1	Second highest priority	ON   OFF   OFF
2	Available with expansion distribution panel only	OFF   ON   OFF
3	Available with expansion distribution panel only	ON   ON   OFF

## Multiple Chassis Systems

A two chassis PLC-3 system requires two expansion modules, one installed in each chassis, connected by an expansion cable set. Connectors on the ends of the expansion cable set (labeled A, B, C, and D) attach to connectors on the expansion modules (also labeled A, B, C, and D). Match the letter of the cable to the same letter of the connector. Figure 1 shows a typical two chassis PLC-3 system.

**Figure 1**  
**Two Chassis PLC-3 System**



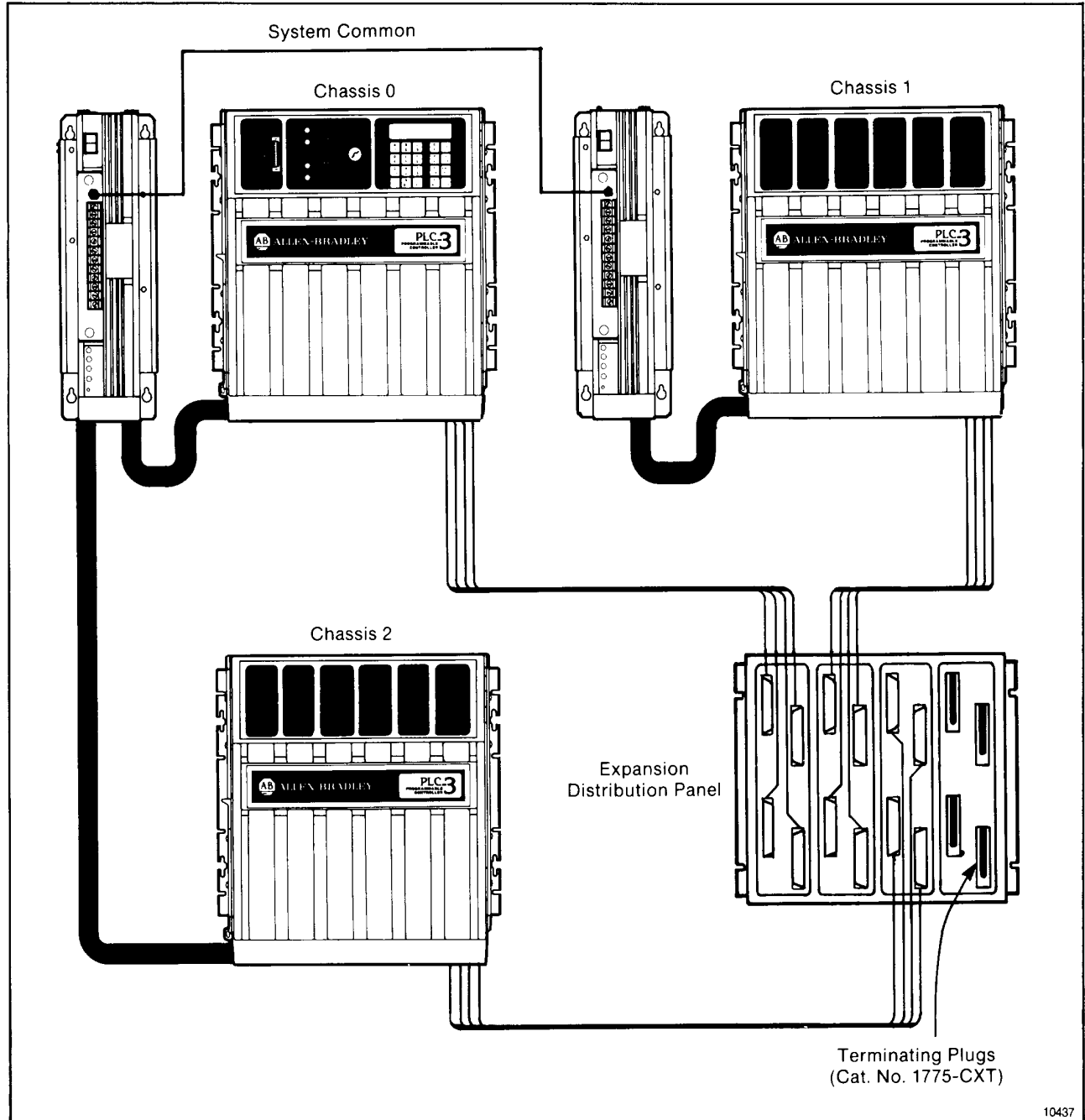
Note: The 1775-S4A I/O Scanner must be in the main chassis to interface with the front panel. The thumbwheel switch should be set to number 1.

Expansion Cable Set  
 (Cat. No. 1775-CX)

10436

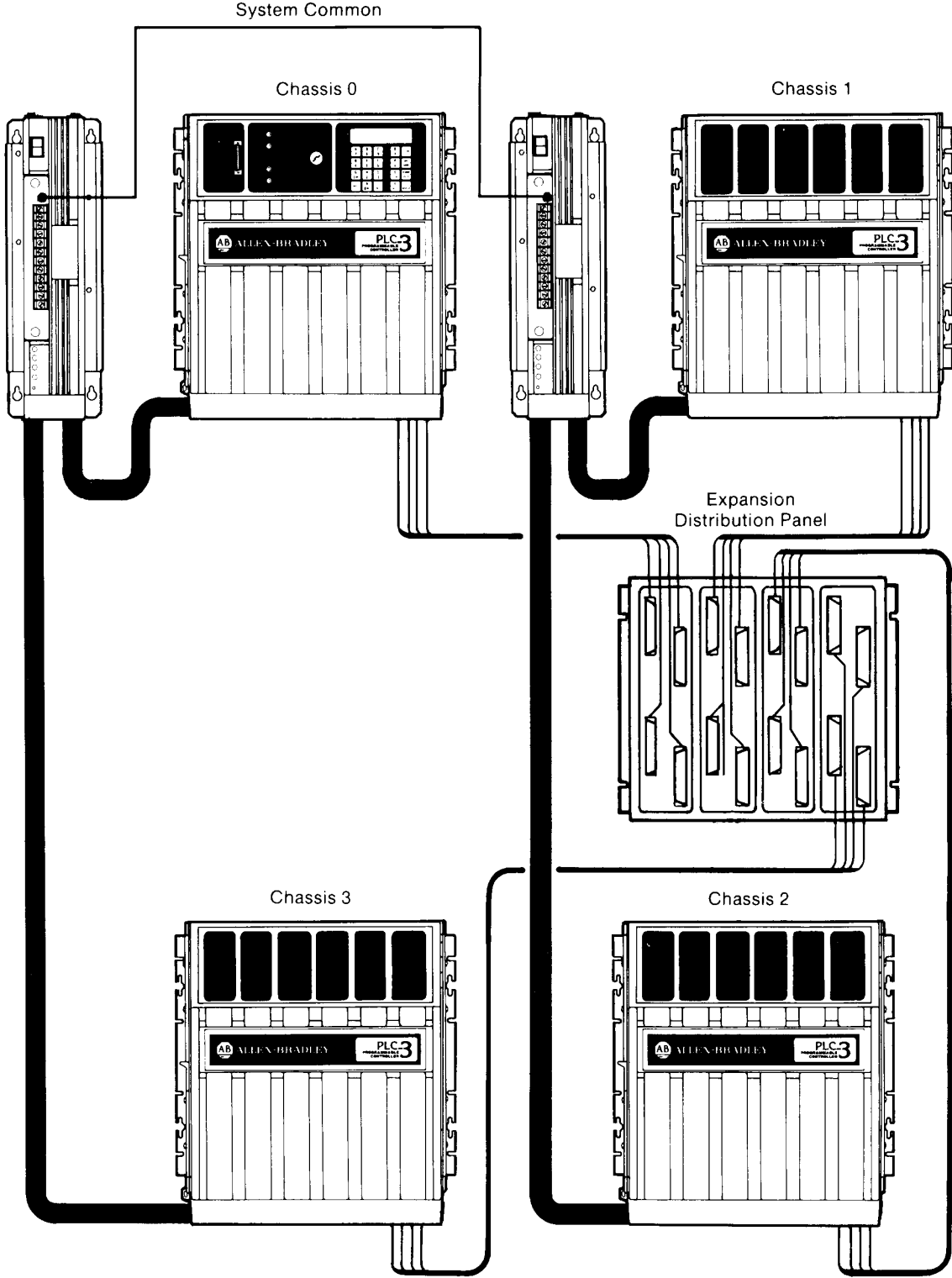
Three and four chassis PLC-3 systems require an expansion module installed in each chassis, an expansion distribution panel, and one expansion cable set per chassis. One end of each expansion cable set is connected to an expansion module in the same manner as in a two chassis system. The other end is connected to the expansion distribution panel. Figure 2 shows a three chassis system, figure 3 shows a four chassis system.

Figure 2  
Three Chassis PLC-3 System



10437

Figure 3  
Four Chassis PLC-3 System





Since the 1775-P1 power supply can deliver only enough current for two full chassis, three and four chassis systems require two 1775-P1 power supplies. Connect the “system common” studs on the two power supplies together with either 1 inch metal braid wire or 8 AWG wire.



**WARNING:** In three chassis systems, chassis 0 and chassis 2 must use the same power supply. In four chassis systems, chassis 0 and chassis 3 must use the same power supply. Failure to connect the power supplies in this manner could result in unpredictable operation, causing equipment damage and/or injury to personnel.

---

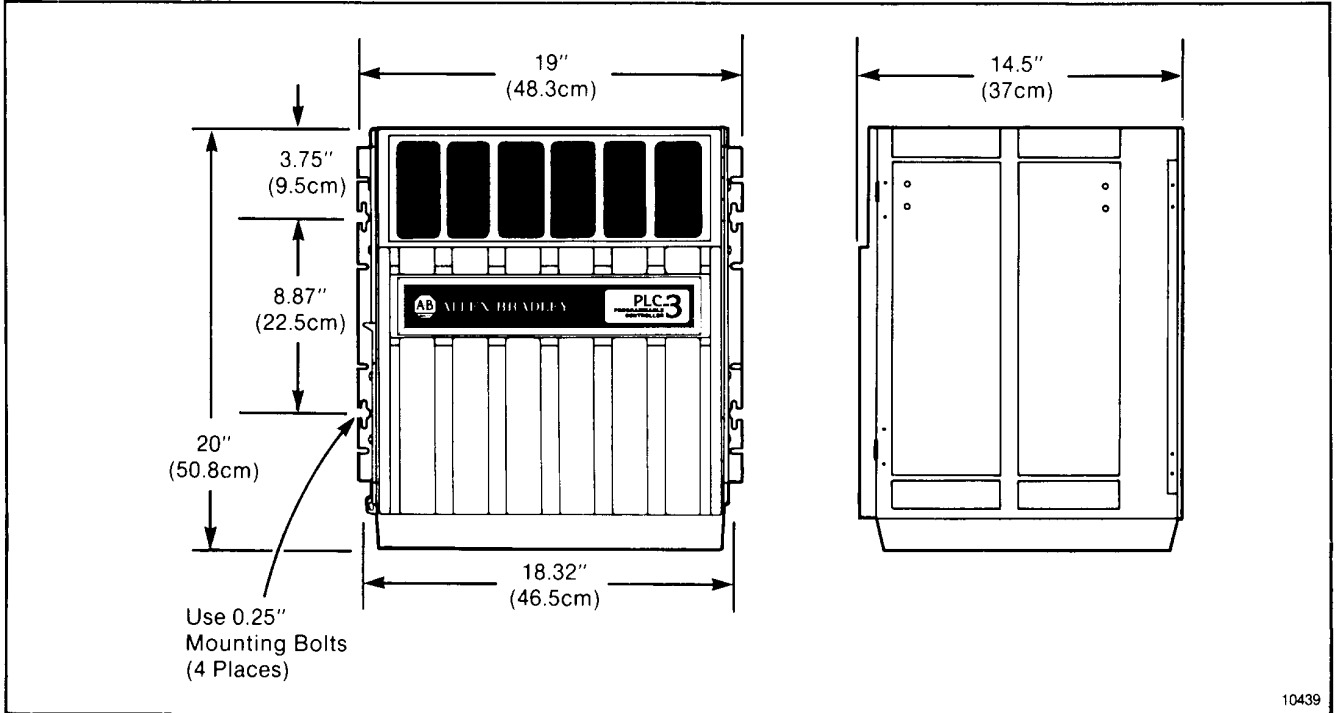
## Chassis Mounting Kit

Expansion chassis mounting dimensions are shown in figure 4, and expansion distribution panel mounting dimensions are shown in figure 5. For rack mounting of the chassis, order chassis 19-inch Rack Mounting Kit (cat. no. 1775-XA). The rack mounting kit includes:

- Mounting brackets
- Hardware for mounting the brackets to the chassis
- Hardware for mounting the brackets to the mounting rails

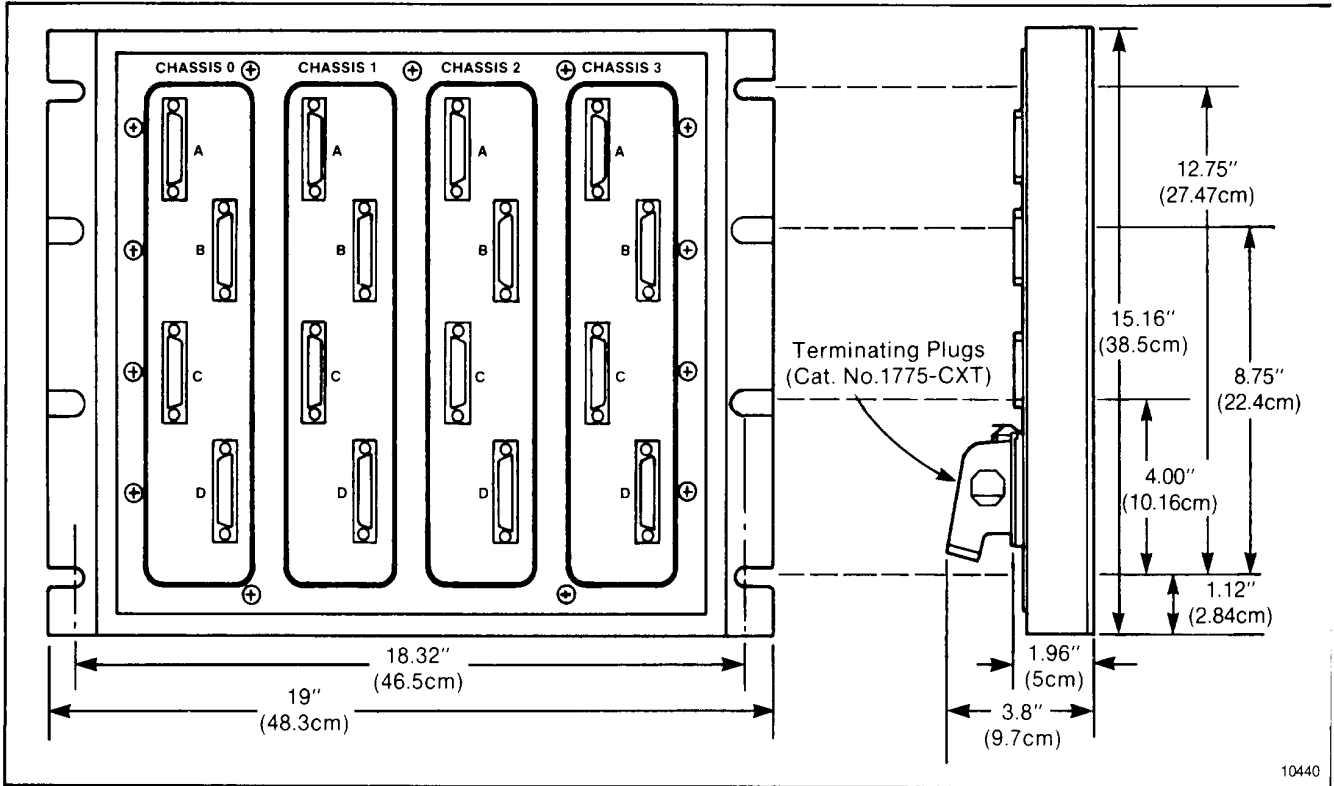
Figure 6 shows the location of the mounting brackets.

Figure 4  
Expansion Chassis Mounting Dimensions

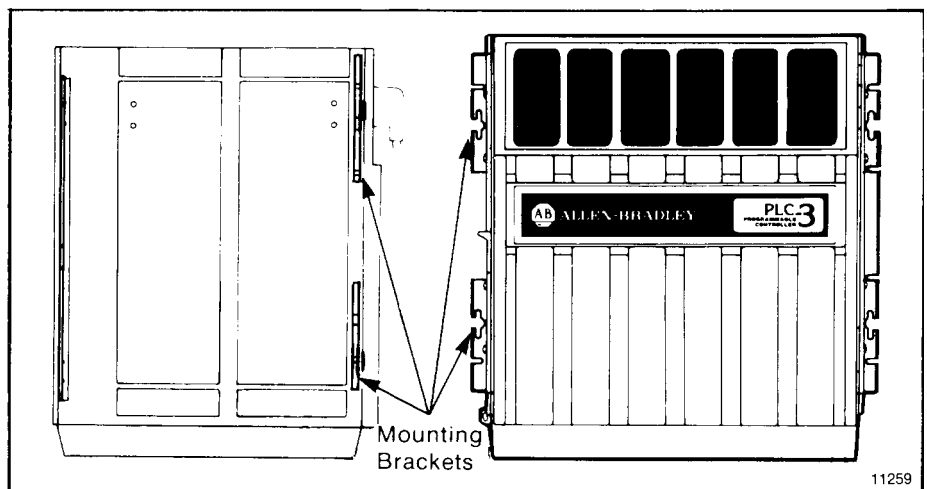


10439

**Figure 5**  
**Expansion Distribution Panel Mounting Dimensions**



**Figure 6**  
**Location of Mounting Brackets**

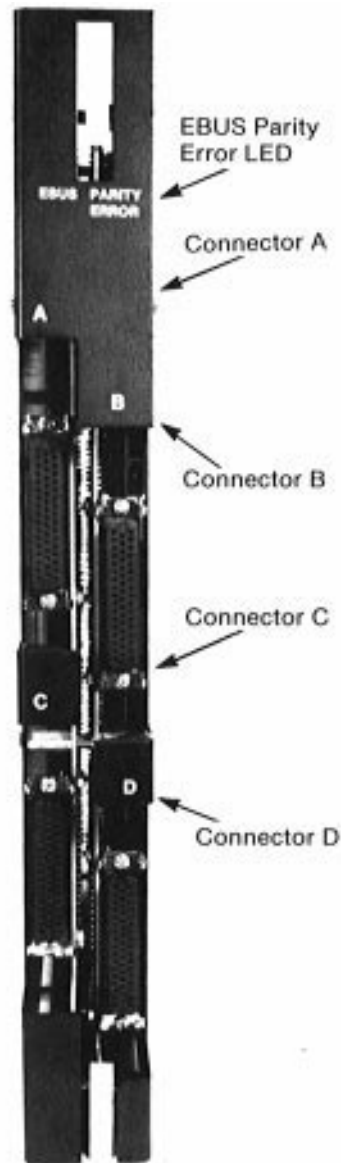


## PLC-3 Expansion Module

Figure 7 shows a front view of this expansion module.

The PLC-3 expansion module occupies one slot in a PLC-3 main chassis or expansion chassis. Four 50-pin connectors, located on the front edge of the expansion module, provide access to the expansion bus (EBUS). The expansion bus is a set of cables which form the communication link between different chassis in a PLC-3 system.

**Figure 7**  
**PLC-3 Expansion Module**



On the front of this module there is a red LED indicator labeled EBUS PARITY ERROR. This indicator, when illuminated, tells you that a parity error has occurred during a transmission between any 1775-LX expansion modules. The module will continue to operate when the LED is on. Cycling power to the processor should clear the EBUS PARITY ERROR indicator.

## **Module Placement**

The PLC-3 expansion chassis provides six module slots with free flow convection cooling. Figure 1 illustrates typical module placement for optimum performance in a two chassis system. However, virtually any module will operate in any slot.

## **PLC-3 Expansion Distribution Panel**

The expansion distribution panel is used for three and four chassis PLC-3 systems. It can be mounted in a 19 inch rack. Sixteen 50-pin connectors on the distribution panel connect to the expansion cable set, and in three chassis systems, to the terminators. There are no terminators needed for a two or four chassis system.

## **PLC-3 Expansion Cable Set**

A PLC-3 expansion cable set consists of four 10-foot cables. Each cable has a 50-pin connector on each end which connects to either the expansion module or the expansion distribution panel.

## **PLC-3 Expansion System Terminators**

These terminators are used in three chassis PLC-3 systems and are connected to Channel 3 of the 1775-CXD expansion distribution panel.

## **Related Publications**

For additional information concerning the multi-chassis PLC-3 system, refer to the PLC-3 Programmable Controller Assembly and Installation Manual, publication 1775-800.

## Specifications

### Expansion Chassis

#### Six Module Slots

#### Power Supply

(from 1775-P1 power supply)

- +5,+15,-15VDC, and control signals

#### Dimensions (W x H x D)

- 19x 20x14.5 inches (48.3 x 50.8 x 37cm)

#### Weight (without modules)

- 40 lbs (18kg)

#### Mounting

- Panel
- Rack

### Expansion Module

#### Single Slot

#### Power Supply

(from 1775-P1 power supply via chassis backplane)

- +5V and -15V DC

### Backplane Current

(includes current to drive the expansion distribution panel)

- 5A from 5V DC circuit
- 80mA from -15V DC circuit

### Weight

- 5.5 lbs (2.5 kg)

### Expansion Distribution Panel

#### Dimensions (W x H x D)

- 19x15x1.5 inches (48.3 x 38.1x 3.81 cm)

### Weight

- 8.5 lbs (3.8 kg)

### System Environmental Conditions

- Operational Temperature:  
32° to 140°F (0° to 60°C)
- Storage Temperature:  
-40° to 185°F (-40° to 85°C)
- Humidity:  
5% to 95% (without condensation)



**ALLEN-BRADLEY**  
A ROCKWELL INTERNATIONAL COMPANY

As a subsidiary of Rockwell International, one of the world's largest technology companies — Allen-Bradley meets today's challenges of industrial automation with over 85 years of practical plant-floor experience. More than 11,000 employees throughout the world design, manufacture and apply a wide range of control and automation products and supporting services to help our customers continuously improve quality, productivity and time to market. These products and services not only control individual machines but integrate the manufacturing process, while providing access to vital plant floor data that can be used to support decision-making throughout the enterprise.

With offices in major cities worldwide

**WORLD  
HEADQUARTERS**  
Allen-Bradley  
1201 South Second Street  
Milwaukee, WI 53204 USA  
Tel: (1) 414 382-2000  
Telex: 43 11 016  
FAX: (1) 414 382-4444

**EUROPE/MIDDLE  
EAST/AFRICA  
HEADQUARTERS**  
Allen-Bradley Europe B.V.  
Amsterdamseweg 15  
1422 AC Uithoorn  
The Netherlands  
Tel: (31) 2975/43500  
Telex: (844) 18042  
FAX: (31) 2975/60222

**ASIA/PACIFIC  
HEADQUARTERS**  
Allen-Bradley (Hong Kong)  
Limited  
Room 1006, Block B, Sea  
View Estate  
28 Watson Road  
Hong Kong  
Tel: (852) 887-4788  
Telex: (780) 64347  
FAX: (852) 510-9436

**CANADA  
HEADQUARTERS**  
Allen-Bradley Canada  
Limited  
135 Dundas Street  
Cambridge, Ontario N1R  
5X1  
Canada  
Tel: (1) 519 623-1810  
FAX: (1) 519 623-8930

**LATIN AMERICA  
HEADQUARTERS**  
Allen-Bradley  
1201 South Second Street  
Milwaukee, WI 53204 USA  
Tel: (1) 414 382-2000  
Telex: 43 11 016  
FAX: (1) 414 382-2400



## Artisan Technology Group is your source for quality new and certified-used/pre-owned equipment

- FAST SHIPPING AND DELIVERY
- TENS OF THOUSANDS OF IN-STOCK ITEMS
- EQUIPMENT DEMOS
- HUNDREDS OF MANUFACTURERS SUPPORTED
- LEASING/MONTHLY RENTALS
- ITAR CERTIFIED SECURE ASSET SOLUTIONS

### SERVICE CENTER REPAIRS

Experienced engineers and technicians on staff at our full-service, in-house repair center

### *InstraView*<sup>SM</sup> REMOTE INSPECTION

Remotely inspect equipment before purchasing with our interactive website at [www.instraview.com](http://www.instraview.com) ↗

### WE BUY USED EQUIPMENT

Sell your excess, underutilized, and idle used equipment. We also offer credit for buy-backs and trade-ins. [www.artisanng.com/WeBuyEquipment](http://www.artisanng.com/WeBuyEquipment) ↗

### LOOKING FOR MORE INFORMATION?

Visit us on the web at [www.artisanng.com](http://www.artisanng.com) ↗ for more information on price quotations, drivers, technical specifications, manuals, and documentation

**Contact us:** (888) 88-SOURCE | [sales@artisanng.com](mailto:sales@artisanng.com) | [www.artisanng.com](http://www.artisanng.com)