



Artisan Technology Group is your source for quality new and certified-used/pre-owned equipment

- FAST SHIPPING AND DELIVERY
- TENS OF THOUSANDS OF IN-STOCK ITEMS
- EQUIPMENT DEMOS
- HUNDREDS OF MANUFACTURERS SUPPORTED
- LEASING/MONTHLY RENTALS
- ITAR CERTIFIED SECURE ASSET SOLUTIONS

SERVICE CENTER REPAIRS

Experienced engineers and technicians on staff at our full-service, in-house repair center

*InstraView*SM REMOTE INSPECTION

Remotely inspect equipment before purchasing with our interactive website at www.instraview.com ↗

WE BUY USED EQUIPMENT

Sell your excess, underutilized, and idle used equipment. We also offer credit for buy-backs and trade-ins. www.artisanng.com/WeBuyEquipment ↗

LOOKING FOR MORE INFORMATION?

Visit us on the web at www.artisanng.com ↗ for more information on price quotations, drivers, technical specifications, manuals, and documentation

Contact us: (888) 88-SOURCE | sales@artisanng.com | www.artisanng.com

Secure Digital Scan Card Series 3

User's Guide



COPYRIGHT NOTICE

Copyright © 2009 Socket Mobile, Inc. All rights reserved.

Socket, the Socket logo, Battery Friendly, SocketScan, SoMo and Business Mobility Now! are registered trademarks or trademarks of Socket Mobile, Inc. All other brand and product names are trademarks of their respective holders.

The Secure Digital Scan Card includes technology licensed under United States Patent No. 5,902,991.

Reproduction of the contents of this manual without the permission of Socket Mobile is expressly prohibited. Please be aware that the products described in this manual may change without notice.

Feel free to contact Socket Mobile at:

Socket Mobile, Inc.
39700 Eureka Drive
Newark, CA 94560-4808
USA

Other than the above, Socket Mobile can assume no responsibility for anything resulting from the application of information contained in this manual.

Socket Mobile requests that you refrain from any applications of the Secure Digital Scan Card that are not described in this manual. Please refrain from disassembling the card. Disassembly of this device will void the product warranty.

You can track new product releases, software updates and technical bulletins by visiting the Socket Mobile website at: <http://www.socketmobile.com>

TABLE OF CONTENTS

| | |
|--|-----------|
| COPYRIGHT NOTICE | 2 |
| 1 INTRODUCTION | 4 |
| PRODUCT VERSIONS | 4 |
| ABOUT THE SOFTWARE | 4 |
| SYSTEM COMPATIBILITY REQUIREMENTS | 4 |
| PACKAGE CONTENTS | 5 |
| PRODUCT REGISTRATION | 5 |
| ACCESSORY | 5 |
| 2 SETUP FOR THE SOMO 650 | 6 |
| STEP 1: ASSIGN A TRIGGER BUTTON | 7 |
| STEP 2: START SOCKETSCAN | 10 |
| STEP 3: INSERT THE CARD | 10 |
| STEP 4: OPEN YOUR APPLICATION | 11 |
| STEP 5: SCAN DATA INTO YOUR APPLICATION | 11 |
| 3 SOCKETSCAN FOR WINDOWS MOBILE | 12 |
| SYMBOLOLOGY SELECTOR | 12 |
| SCANNER SETTINGS | 13 |
| FLOATING TRIGGER | 15 |
| DUAL DEVICE SUPPORT | 17 |
| APPENDICES | |
| A PRODUCT SPECIFICATIONS | 18 |
| B BARCODE LABEL SPECIFICATIONS | 22 |
| C USAGE TIPS | 23 |
| D SETUP FOR WINDOWS MOBILE (NON SOMO) | 24 |
| E SETUP FOR PALM OS | 27 |
| F TROUBLESHOOTING | 31 |
| G TECHNICAL SUPPORT | 33 |
| LIMITED WARRANTY | 34 |
| DISCLAIMER | 34 |
| LIMITED SOFTWARE WARRANTY | 35 |
| REGULATORY COMPLIANCE | 36 |

1 | INTRODUCTION

The Socket Secure Digital Scan Card (SD Scan Card) Series 3 gives you the freedom of scanning barcodes anytime anywhere into a Socket SoMo 650 handheld computer or other PDA running Windows Mobile or Palm OS.

The SD Scan Card is a small and sleek device with no cables or batteries. You can scan barcodes with only one hand, letting you collect data with maximum ease and efficiency.



PRODUCT VERSIONS

The SD Scan Card is available in two versions:

| Version | Performance Level | Scanner Type | Types of Barcodes Read |
|---------|-------------------|---------------|------------------------|
| 3E2 | Entry-Level | Class 1 Laser | 1D |
| 3P | Performance | Class 2 Laser | 1D |

ABOUT THE SOFTWARE



SocketScan™ keyboard wedge software enters scanned data directly into any Windows Mobile or Palm OS program as if it were manually typed. No custom programming is required to use the scanner.



SocketScan Trigger for Windows Mobile gives you an alternative method of triggering the scanner in case you don't want to or can't use a hardware button on your Pocket PC. SocketScan Trigger puts an icon on your screen that you can tap to trigger the scanner.

For software updates, please visit: <http://www.socketmobile.com/support/downloads>

SYSTEM COMPATIBILITY REQUIREMENTS

Windows Mobile:

- Any of the following Windows Mobile versions:
 - Windows Mobile 6 Classic/Professional
 - Windows Mobile 2003, 2003SE or 5.0 for Pocket PC/Pocket PC Phone Edition
- SDIO slot
- Installation requires a host computer with ActiveSync or the Windows Mobile Device Center, available free from the Microsoft website
- Windows Mobile 2003/SE devices require bSQUARE SDIO Now! software in ROM

Palm OS:

- Palm OS 5.2 or greater
- SDIO slot

PACKAGE CONTENTS

- Secure Digital Scan Card
- Installation CD containing software and user documentation
- Booklets containing warranty and copyright information

PRODUCT REGISTRATION

Socket highly recommends that all customers register their products. Registered users receive priority for technical support and can choose to receive special offers for future products and updates and the latest new product information. Register your product online at <http://support.socketmobile.com/>

ACCESSORY

Socket has a FlexGuard silicone cover for the SD Scan Card for use with the Motorola/Symbol MC35 (sold separately). It protects both the scanner and the device. <http://www.socketmobile.com/products/accessories/flexguard-mc35/>



2 | SETUP FOR THE SoMo 650

This chapter explains how to install and use the SD Scan Card with any version of the Socket SoMo 650 handheld computer.

SETUP SUMMARY

STEP 1: Assign a trigger button.

STEP 2: Start SocketScan.

STEP 3: Insert the card.

STEP 4: Open your application.

STEP 5: Scan data into your application.



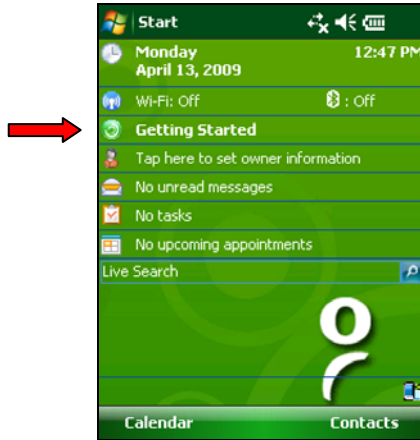
Note: SocketScan software comes pre-loaded on the SoMo 650, thus installation is not required. However, if you wish to install a more recent version of SocketScan, you can download it free from: <http://www.socketmobile.com/support/downloads>

STEP 1: ASSIGN A TRIGGER BUTTON

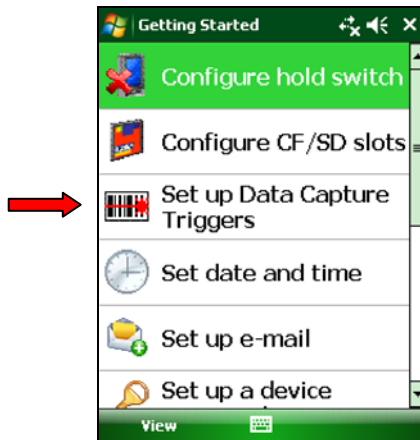
Note: Alternatively, you can use the SocketScan Trigger software to set up a soft trigger on the SoMo screen. See Chapter 3.

Windows Mobile 6 Service Pack 4 or later

1. In the Today screen, tap **Getting Started**.



2. In the list, tap **Set up Data Capture Triggers**.

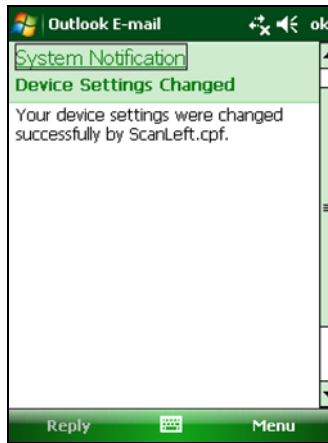


3. In the next screen, tap **LEFT** or **RIGHT** in the "Barcode to..." line to assign the button on the left or right side of the SoMo as the barcode scanner trigger.



Note: The "RFID to..." options do not apply to the CompactFlash Scan Card..

4. The SoMo will configure the trigger button and send a confirmation message to your inbox.

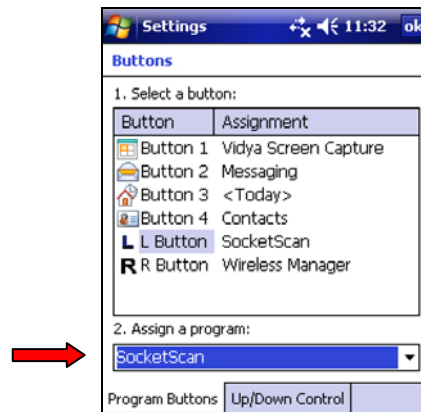


Windows Mobile 5 or 6 (prior to Windows Mobile 6 Service Pack 4)

1. Tap **Start | Settings | Buttons**.



2. Select a button to trigger the CF Scan Card. In the drop-down menu, select **SocketScan**. When done, tap **ok**.



IMPORTANT! Be sure to select SocketScan. Do not select the programs Socket Read RFID, Socket Read Barcode or Socket Trigger Select, which are not for the CF Scan Card.

STEP 2: START SOCKETSCAN



1. Tap **Start | Programs | SocketScan folder | SocketScan.**



SocketScan

Note: Alternatively, you can press the trigger button to start the program.

2. When SocketScan is running, a SocketScan icon will appear at the bottom of the Today screen.

| Icon | Meaning |
|---|--|
|  | SD Scan Card detected. SocketScan is ready for barcode scanning. |
|  | No scanner detected. The scanner is either missing or improperly inserted. |

STEP 3: INSERT THE CARD

1. Open the card slot cover on top of the SoMo and insert the SD Scan Card into the SD card slot.



***Be sure to insert the card all the way into the slot.
Do not insert the card backwards.
Do not push the card in too hard, or you can damage the card or the card slot of the SoMo.***

Note: To remove the SD Scan Card, push it completely into the slot. After the card springs back, you can safely remove the card. Do not pull the card out without pushing first, or you can damage the connector the next time you insert a card.

2. Make sure the SocketScan icon changes to indicate that the scanner is detected.

STEP 4: OPEN YOUR APPLICATION

Open the application that you want SocketScan to feed scanned data into (e.g., Excel, Notepad, etc.). Place the cursor where you would like data from the next scan to go.

STEP 5: SCAN DATA INTO YOUR APPLICATION

1. Press the assigned trigger button and scan the barcode. Make sure the aiming beam covers the entire width of the barcode.



When data is read, a beep will sound, and the scanner beam will turn off. If the SD Scan Card fails to read data within a few seconds, the scanner beam will turn off, and you must try again.

Note: For tips on scanning technique, please refer to Appendix E.

Note: If your device enters sleep mode when SocketScan is running, press the ON button to initialize the scanner and resume operation.


2. After a successful scan, data should appear in your document. By default, the cursor will advance to the next line, ready for the next scan.

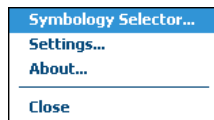
3 | SOCKETSCAN FOR WINDOWS MOBILE

This chapter explains how to install and use the SD Scan Card with any version of the Socket SoMo 650 handheld computer.

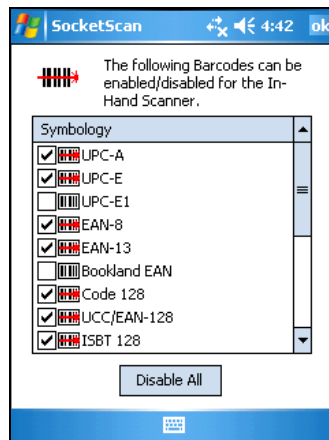
SYMBOLGY SELECTOR

The applet makes it easy to modify which symbologies you want the scanner to recognize.

1. Tap on the scanner icon  at the bottom of the Today screen. In the pop-up menu, select **Symbology Selector...**



2. In the screen that appears, check the symbologies you wish to enable. Uncheck those you wish to disable. Tap **ok**.




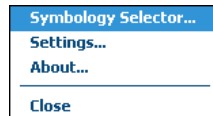
Notes:

- *Socket does not recommend enabling all possible symbologies, because it will slightly lengthen the decode process.*
- *If you want to scan Vehicle Identification Number barcodes, select **VIN**.*
- *If you want to scan UPC-A barcodes but not GS1 Databar barcodes, Socket recommends that you disable GS1 DataBar support to prevent UPC-A barcodes from being misread as GS1 Databar.*

SCANNER SETTINGS

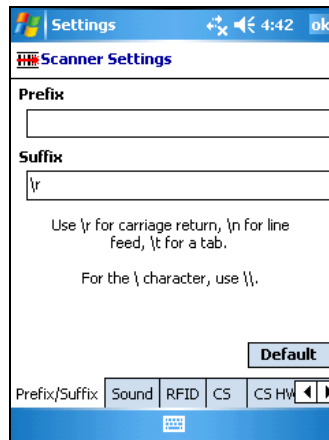
The SocketScan configuration utility lets you specify prefix and/or suffix characters to be added automatically to the data you scan, as well as sounds to indicate a good read.

1. Tap on the SDSC scanner icon  at the bottom of the Today screen. In the pop-up menu, select **Settings...**



Note: You can configure prefix/suffixes and sounds whether or not the SD Scan Card is inserted.

2. In the Prefix/Suffix screen, enter the characters you want to be appended to each scan (128 character maximum).

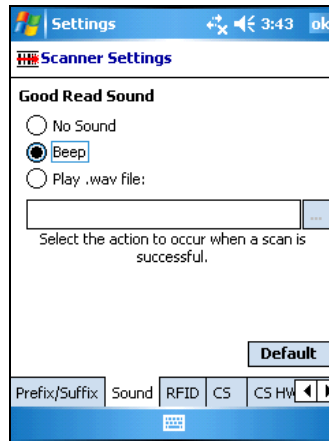


Note: The default suffix is a carriage return. Only printable ASCII characters can be used as prefixes or suffixes.

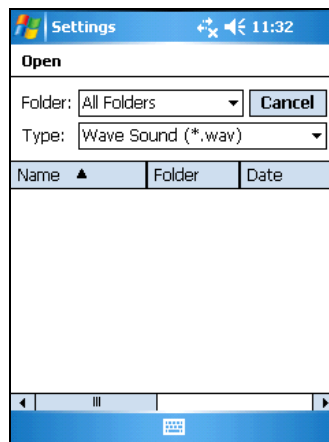
Note: If you scan barcodes into Word Mobile, the first letter of each prefix will be capitalized.

3. Tap on the **Sound** tab.

4. In the screen that appears, select a sound for indicating successful scans.



To you want to play a .WAV file, after selecting **Play .wav file**, you can search through files by tapping the browse box. In the **Open** screen, tap on the file you want:



Note: You can only select a WAV file from the My Documents folder. If needed, copy the file you need to this folder.

5. After making all your scanner setting selections tap **ok**.

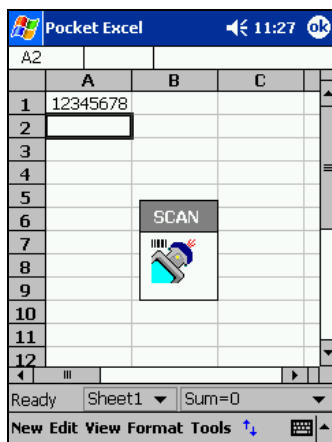
FLOATING TRIGGER

If you find it inconvenient or impossible to assign or use a hardware button to trigger the scanner, you can install this virtual trigger button that “floats” on top of the active application.

1. Make sure to do all of the following before using SocketScan Trigger:
 - If you are not using the SoMo, install SocketScan Trigger from the installation CD. The software must be installed separately from SocketScan.
 - Start SocketScan. Tap **Start | Programs | SocketScan**.
 - Insert the SD Scan Card into your Pocket PC.
 - Open the application that you want to scan data into.



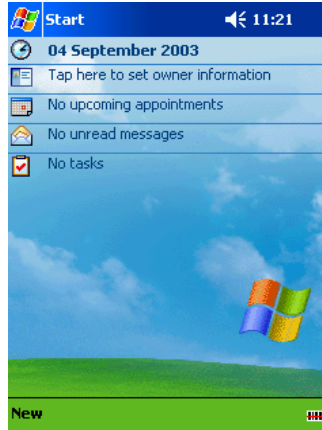
2. Tap **Start | Programs | SocketScan Trigger**.
3. The floating trigger button will appear on your screen on top of the active application.



Drag from the title bar to move the trigger button to a convenient place on the screen.

Tap the trigger button to activate the scanner.

4. A SocketScan Trigger icon will also appear in the menu bar of the Today screen. Tap this icon to open a pop-up menu with the following options:



- Tap **Scan Now** to activate the scanner as if you had tapped the trigger button.
- Tap **Remove Floating Trigger** to remove the trigger button from the screen but keep the icon handy on the task bar. To restore the trigger button, tap on the menu bar icon. In the pop-up menu, tap **Launch Floating Trigger**.
- Tap **About** to view SocketScan Trigger version information.
- Tap **Close SocketScan Trigger** to close the application completely. From this state, the SocketScan trigger can only be launched from the Programs page.

DUAL DEVICE SUPPORT

SocketScan for Windows Mobile versions 7.2.4.0 and later support the simultaneous use of two Socket data collection devices with the same computer.

Note: SocketScan can capture data from only one cordless scanner at a time.

Simply connect or plug in each device you plan to use as you normally would.

The functionality of each device is the same, and no extra configuration is required.

You can configure each device separately. In the SocketScan menu, tap on the appropriate device to configure its settings.



APPENDIX A

PRODUCT SPECIFICATIONS

Physical Characteristics:

| | |
|--------------|-----------------------|
| Dimensions | 66.5 x 29.4 x 20.0 mm |
| Total Weight | 17 g (0.6 oz) |

Environmental Characteristics:

| | |
|-----------------------|---|
| Operating Temperature | +32 to +122°F (0 to +50° C) |
| Storage Temperature | -40 to +158°F (-40 to +70°C) |
| Relative Humidity | 5% to 95% non-condensing |
| Ambient Light | Sunlight: 10,000 ft. candles (107,640 lux) Artificial light: 450 ft. candles (4,844 lux) |

Power Consumption (3.3V supply):

| | |
|----------|----------------|
| Standby | 4 mA (13 mW) |
| Scanning | 90 mA (297 mW) |

Operating System Support:

| | |
|-------------------|--|
| Windows Mobile OS | 6 Classic/Professional 5.0 for Pocket PC/Pocket/PC Phone 2003/2003SE for Pocket PC/Pocket PC Phone with BSQUARE SDIO Now! software in ROM |
| Palm OS | 5.2 or greater |

Compatibility: Windows COM port

Barcode Symbology Support:

| | |
|--------|---|
| 3E2/3P | Bookland EAN, Chinese 2 of 5, Codabar, Code 11, Trioptic Code 39, Code 39 Full ASCII, Code 93, Code 128, Discrete 2 of 5, GS1-128 (UCC-128/EAN-128), GS1 DataBar (RSS), ISBN, ISBT 128, Code 39, Interleaved 2 of 5, MSI Plessey, UPC/EAN (UPC-A, UPC-E, UPC-E1, EAN-13, EAN-8, UCC/EAN-128), VIN |
|--------|---|

Scanner Performance:

| | |
|----------------------|---|
| Scan Repetition Rate | 100 scans/sec (bidirectional) |
| Optical Resolution | 0.004 in. minimum/barcode element width (X Dimension) |
| Print Contrast | Minimum 25% absolute dark/light reflectance (MRD) measured at 650 MRD |
| Scan Angle | Wide (default): 47° ±3°, Narrow: 35° ±3° |
| Decode Distance* | 3E2: 3.8 to 27 cm (1.5 to 10.5 inches) typical |
| | 3P: 3.8 to 114+ cm (1.5 to 45+ inches) typical |

*Depends on symbol density, symbology, W-N Ratio, label media, and scan angle)

LED/Laser Safety:

3E2: IEC60825-1 Class 1 laser

3P: IEC60825-1 Class 2 laser

Interface Standard:

Secure Digital I/O

Certification:

FCC: Part 15, Class B

CE:EN55024:2003

ICES-003 Class B

CISPR 22

AS 3548

C-TICK: s.182

RoHS

21CFR1040.10

21CFR1040.11

Software Included:

Universal Installer

SocketScan keyboard wedge software for Windows Mobile and Palm OS

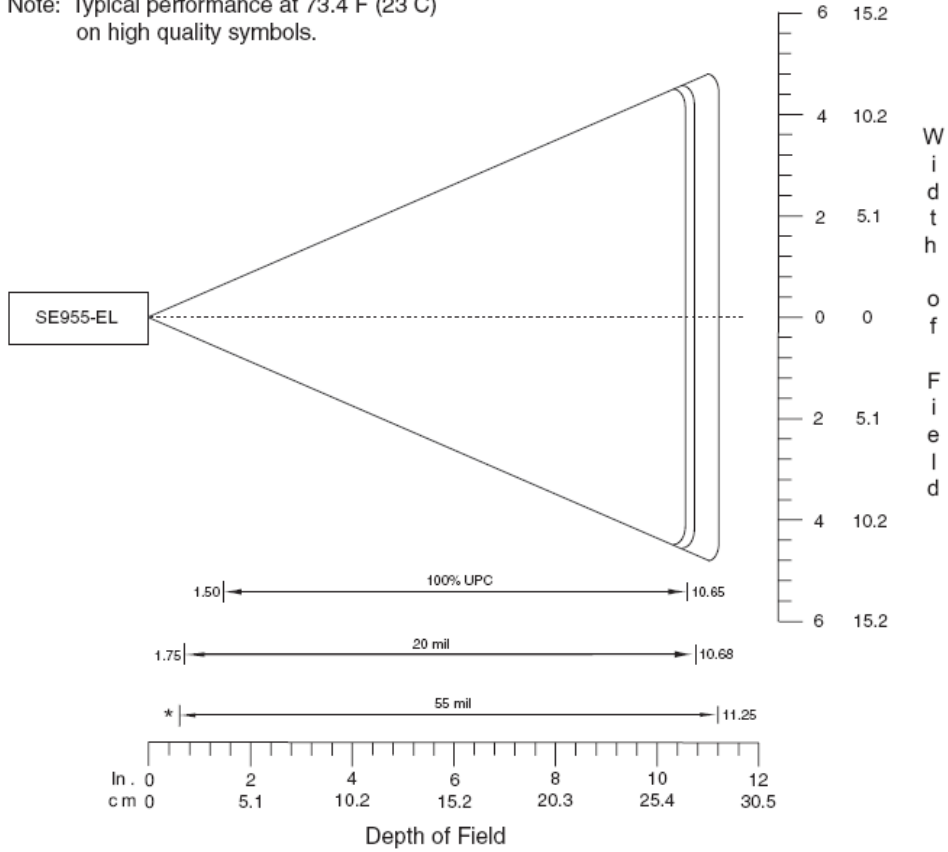
Socket Floating Trigger for Windows Mobile

Decode Zones:

The decode zones for the SD Scan Card are shown in the following pages. The minimum element width ("X Dimension" or barcode "size") is the width in thousandths of an inch (mils) of the narrowest element (bar or space) in the symbol. The figures shown are the typical scanning distances (depths of field) for selected barcode sizes. The maximum usable length of a barcode symbol (Width of Field) at any given range is also shown below.

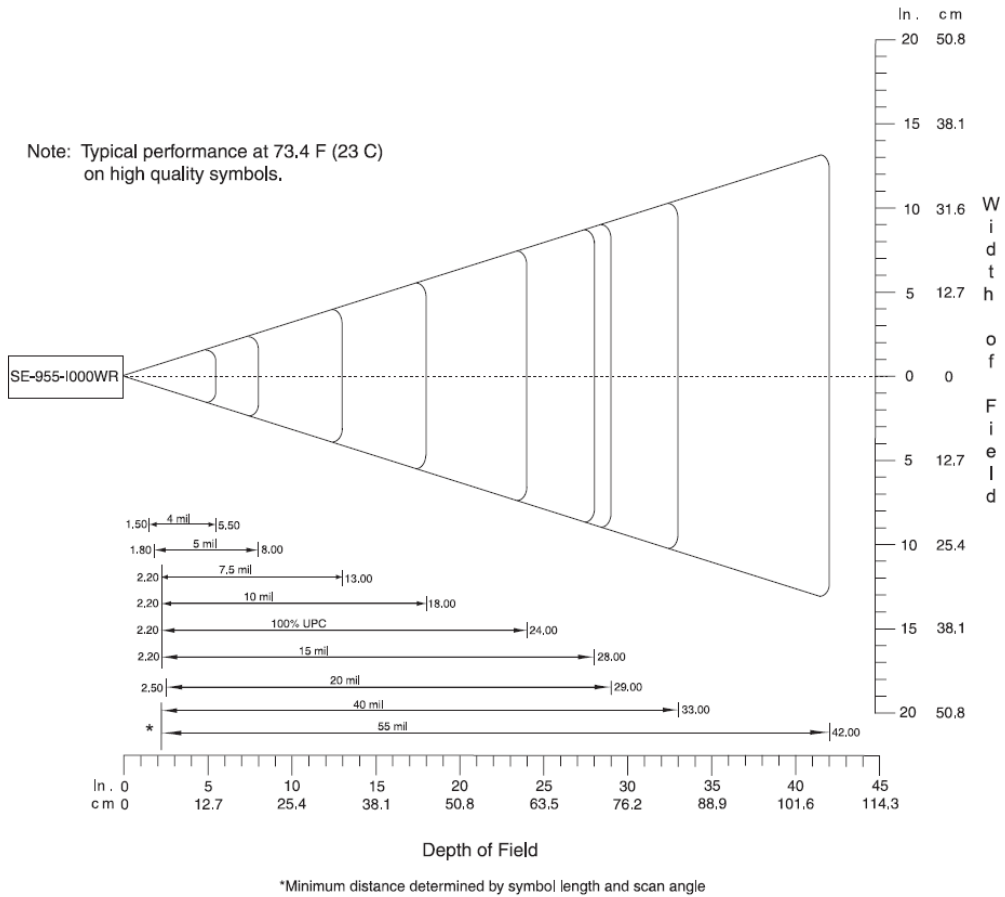
SD Scan Card 3E2: Class 1 Laser (Entry Level) Decode Zone

Note: Typical performance at 73.4 F (23 C)
on high quality symbols.



*Minimum distance determined by symbol length and scan angle

SD Scan Card 3P: Class 2 Laser Decode Zone



APPENDIX B

BARCODE LABEL SPECIFICATIONS

All barcode symbols/labels should satisfy the appropriate AIM Uniform Symbology Specification.

Background Substrate:

The barcode symbol should be printed on material (media) that is reflective and has a matte (not glossy) finish. A background diffuse reflectance of at least 70% to 80% is desirable for optimum contrast. Retro-reflective media should be used to obtain decode distances greater than 36 inches.

Ink Color and Type:

The inked bars should not exceed 25% reflectance at the wavelength that is being used for reading, whether printed with black ink or colored ink. The reflectance value should not vary more than 5% within the same character.

Voids and Specks:

The code should be printed clearly, free of voids, specks, blemishes and lines that could "fool" the scanner. Specks or blemishes in the white spaces, or false or missing bar sections could be interpreted by the reading equipment as part of the code. Generally, the width of such flaws is more serious than the height. Code symbols/ labels should be rejected if these defects are present.

Definition:

The bars in the barcode symbol should be well defined. Their edges should not be rough or fuzzy, so that the bars and spaces have the proper widths intended for the barcode symbology used.

Contrast:

Background reflectance (that of the substrate on which the codes are printed) should always provide a good contrast relative to the ink reflectance (that of the code bars). The difference between the two should be at least 37.5% at the wavelength used for reading.

Tolerance:

The ratio of the widths of bars and spaces in a barcode symbol must conform to the appropriate AIM barcode specifications and can cause problems if not correct throughout the barcode. Problems can occur when bar edges are smeared or rough, or when they exhibit voids.

APPENDIX C

USAGE TIPS

Practice to determine the best scanning angle and distance for your type of bar code.

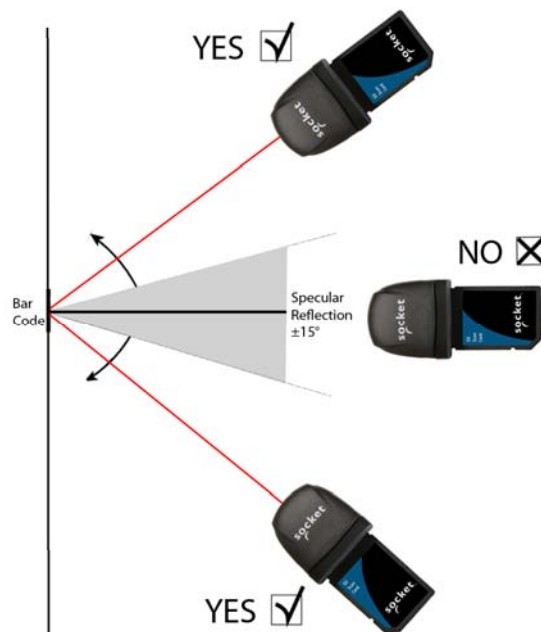
Aiming Beam

Aim the scanner so that the red beam covers the entire width of the bar code.



Scan Angle

For best results with the laser-based SD Scan Card, position the scanner at an angle to the bar code, at least 15° from perpendicular. Otherwise, light can bounce back into the scanner and “blind” the sensing mechanism.



APPENDIX D

SETUP FOR WINDOWS MOBILE

This chapter explains how to install and use the SD Scan Card in a Windows Mobile powered device from a manufacturer other than Socket.

STEP 1: UNINSTALL OTHER SCANNING SOFTWARE

Uninstall any barcode scanning software already on your PDA, including previous versions of SocketScan. You can either uninstall directly from your PDA, or indirectly with synchronization software. Please refer to your PDA manual for instructions.

STEP 2: INSTALL SOCKETSCAN SOFTWARE

ADVANCED USERS: Refer to the README file for CAB installation instructions.

1. Use a serial/USB cable or cradle and the appropriate synchronization software to make an active connection between your device and a host PC.
2. Insert the installation CD into your host PC.
3. Use **My Computer** or **Windows Explorer** to access your CD-ROM drive. In the CD, click on SETUP.EXE.
4. The SocketScan Setup Center will appear in your web browser. Read the first page and click **Installation** in the left margin.
5. In the SocketScan Installation page, in the Windows CE section, click **Install** in the first paragraph.
6. Your web browser will present a series of dialogs.

Internet Explorer:

- In the File Download –Security Warning dialog, click **Run**.
- In the second warning dialog, click **Run**. Internet Explorer will download the file.

Firefox:

- In the file opening dialog, click **Save File**. Firefox will download the file.
 - In the Downloads list, next to SocketScanCE.exe, click **Open**.
 - In the warning dialog, click **OK** to continue.
7. The installation wizard will automatically begin. Follow the wizard to install the software.

- If your device warns that the software comes from an unknown publisher, tap **Yes** to continue installation.
- When installation is complete, remove the device from the cradle. Soft reset the device by pressing the reset button.

IMPORTANT! Soft reset your device, or some icons will not appear properly.

STEP 3: ASSIGN A TRIGGER BUTTON

Refer to your PDA manual for complete instructions.

Note: Alternatively, you can use the SocketScan Trigger software to set up a soft trigger on the screen. See Chapter 3.

- Tap **Start | Settings | Buttons**.
- From the **Button** list, tap to select a button to trigger the SD Scan Card. In the drop-down menu, select **SocketScan**. When done, tap **ok**.

STEP 4: START SOCKETSCAN



- Tap **Start | Programs | SocketScan**.



SocketScan

Note: Alternatively, you can press the trigger button to start the program.

- Make sure the "Scan Card detected" icon appears at the bottom of the Today screen.

| Icon | Meaning |
|---|--|
|  | SD Scan Card detected. SocketScan is ready for barcode scanning. |
|  | No scanner detected. The scanner is either missing or improperly inserted. |

STEP 5: INSERT THE SD SCAN CARD

- Insert the card into your device's SDIO slot. Make sure the card is positioned correctly. Do not insert the card upside-down or force the card in too hard.

Be sure to insert the card all the way into the slot.

**Do not insert the card backwards.
Do not push the card in too hard, or you can damage the card or the card slot of your PDA.**

Note: To remove the SD Scan Card, push the card completely into the slot. After the card springs back, you can safely remove the card. Do not pull the card out without pushing first, or you can damage the connector the next time you insert a card.

2. Make sure the SocketScan icon changes to indicate that the SD Scan Card is detected.

STEP 6: OPEN YOUR APPLICATION

Open the application that you want SocketScan to feed scanned data into (e.g., Excel, Notepad, etc.). Place the cursor where you would like data from the next scan to go.

STEP 7: SCAN DATA INTO YOUR APPLICATION

1. Press the assigned trigger button and scan the barcode. Make sure the aiming beam covers the entire width of the barcode.



When data is read, a beep will sound, and the scanner beam will turn off. If the SD Scan Card fails to read data within a few seconds, the scanner beam will turn off, and you must try again.

Note: For tips on scanning technique, please refer to Appendix E.

Note: If your device enters sleep mode when SocketScan is running, press the ON button to initialize the scanner and resume operation.

2. After a successful scan, data should appear in your document. By default, the cursor will automatically advance to the next line, ready for the next scan.

Note: For information on the application features of SocketScan, please refer to Chapter 3.

APPENDIX E

SETUP FOR PALM OS

Note: The instructions in this chapter were based on a Tungsten T running Palm OS 5.0. The instructions for your device may differ.

STEP 1: UNINSTALL OTHER SCANNING SOFTWARE

Uninstall any barcode scanning software already on your PDA, including previous versions of SocketScan. You can either uninstall directly from your PDA, or indirectly with synchronization software. Please refer to your PDA manual for instructions.

STEP 2: INSTALL THE SOFTWARE

1. Use HotSync and a serial/Ethernet/USB cable or cradle to connect your device to a host PC.
2. Insert the SocketScan installation CD into your host PC.
3. Use **My Computer** or **Windows Explorer** to access your CD-ROM drive. In the CD, click on SETUP.EXE.
4. The SocketScan Setup Center will appear in your web browser. Read the first page and click **Installation** in the left margin.
5. In the SocketScan Installation page, scroll down to the Palm OS section and click on the **Install** link there.
6. Your web browser will present a series of dialogs.

Internet Explorer:

- In the File Download –Security Warning dialog, click **Run**.
- In the second warning dialog, click **Run**. Internet Explorer will download the file.

Firefox:

- In the file opening dialog, click **Save File**. Firefox will download the file.
 - In the Downloads list, next to SocketScanCE.exe, click **Open**.
 - In the warning dialog, click **OK** to continue.
7. The installation wizard will automatically begin. Follow the wizard to install the software.
 8. When software installation is complete, disconnect the device from the host PC. Soft reset the device by pressing the reset button.

9. A Socket icon should appear on the screen of your device. Tap this icon to install the correct version of SocketScan on your Palm device.
10. Soft reset the Palm device again by pressing the reset button.

STEP 3: INSERT THE CARD


Insert the card into your Palm device's SDIO slot. Make sure the card is positioned correctly. Do not force or shove the card in too hard.

Older Palm m100 & m500 series devices: The SDIO slot is reversed, so the scanner must be inserted backwards.

To remove the SD Scan Card, push the card completely into the slot. After the card springs back, gently remove the card. Do not pull the card out without pushing first, or you may damage the connector the next time you insert a card

Make sure you have soft reset your device after software installation before you insert the card. Press the reset button.

STEP 4: START SOCKETSCAN

1. Start SocketScan. Tap on the **Home** icon. 
2. In the menu in the upper right corner, select **All**.
3. Scroll to the **SocketScan** icon. Tap on the icon.



STEP 5: CONFIGURE SCANNER SETTINGS

1. In the main screen of SocketScan, in **Scanner Device** field, make sure **SD Scan Card** is selected. A picture of the SD Scan Card should appear.
2. Tap **Enabled**. Buttons will appear at the bottom of the screen. Tap **Configure**.
3. Use the Configure screen to configure basic options:

- **Scan Trigger Button:** Tap to select the hardware button you would like to use to trigger the scanner. In the screen that appears, select the hardware button and tap **OK**.

Note: At this time, Palm utilities do not allow assignment of the Record or Voice button as a trigger.

Note: Some older versions of the Palm Treo will only allow you to trigger the scanner with Button 1 or Button 2 (Calendar or Email button).

- **Sound on Good Read:** Check if you would like the device to make a sound whenever the scanner successfully reads a barcode. In the drop-down menu, select the sound you want.

- **Sound Volume:** Select the sound volume used to indicate good reads.
- **Insert Special:** Make sure the cursor is in either the **Prefix** or **Suffix** field. Use the **Insert Special** drop-down menu to select a special function or data (e.g., time stamp) to insert before or after each scan.
- **Prefix/Suffix:** Enter any characters or functions you would like to append to each scan. Besides special functions listed in the **Insert Special** menu, only printable ASCII characters can be used as prefixes or suffixes.

Note: A carriage return [CR] is the default Suffix. This suffix advances the cursor to the next data field in your application.

- **Launch App:** Check if you want SocketScan to launch an application when you start to scan. In the drop-down menu, select the application.

Note: Do not choose Blazer as the auto-launch application.

4. Tap **OK** to make the settings take effect.

STEP 6: OPEN YOUR APPLICATION

If you did not assign SocketScan to launch an application, then you need to manually start the application that you want SocketScan to feed scanned data into.

Open the application. Place the cursor where you want information from the next scan to go.

STEP 7: SCAN DATA INTO YOUR APPLICATION

1. Press the assigned trigger button and scan the barcode. Make sure the aiming beam covers the entire width of the barcode. For scanning tips, please refer to Appendix E.



2. When data is read, your device will make a sound if you configured SocketScan to do so, the scanner will turn off, and data will appear in your application. If no data is read within a few seconds, the scanner will turn off, and you must try again.

SYMBOLGY SELECTOR

1. In the main screen of SocketScan, make sure the SDSC scanner is enabled and tap **Symbologies**.
2. Use the checkboxes to select which symbologies you would like the scanner to decode. Tap **OK**.

Note: Enabling all possible symbologies will make the decode process slightly longer.


SCAN TEST

1. In the main screen of SocketScan, make sure the SD Scan Card is enabled and tap **Test**.
2. Tap **Scan** to trigger the scanner and scan a barcode.


*Note: You cannot use the hardware trigger button for the scan test. Use the **Scan** button to trigger the scanner.*

3. SocketScan will report the encoded data, as well as its symbology type and length. To view the data in hexadecimal format, check **View as Hex**.
4. When done, tap **OK** to exit the Test Scan.

HELP FILES

When SocketScan is open, access help files by tapping on the  symbol in the upper right corner.

VERSION INFORMATION


1. In the main screen of SocketScan, tap on the **Options** button  tap on the upper left corner of the screen to access the Options menu.
2. In the Options menu, tap **About SocketScan**.
3. View the software version information, then tap **OK**.

APPENDIX F

TROUBLESHOOTING

For help on SocketScan, tap **Start | Help** on a Pocket PC, or tap on the  icon on a Palm device.

SYMPTOM:

I get the “No Card Detected”  icon in the task tray of my Pocket PC and can’t trigger the scanner or scan barcodes.

| POSSIBLE REASON | SOLUTION |
|--|---|
| Your Pocket PC does not recognize the SD Scan Card 3E. | Make sure the card is inserted properly. If necessary, remove and reinsert. If using battery power, be sure to tap Yes if asked whether you want to use battery power. |

SYMPTOM:

When I try to scan, the scanner activates, but no data appears on my screen, and the scanner eventually deactivates.

| POSSIBLE REASON | SOLUTION |
|---|--|
| The scanner is too close or too far from the barcode. | Practice so you get accustomed the most effective distance and scanning angle. See Appendix E. |
| The barcode is incorrectly formatted or poorly printed. | Try scanning a barcode that is correctly formatted or printed well, such as on a retail package. See Appendix B. |
| The barcode symbology may be disabled. | If you have Palm device, you can perform a scan test to identify the symbology. If needed, use Symbology Selector to enable the symbology. |

SYMPTOM:

When I press the trigger button, nothing happens.

| POSSIBLE REASON | SOLUTION |
|--|--|
| The hardware button is defective. | Test the button by assigning a different program to it and make sure it works properly. If needed, use the SocketScan utility to assign a different button to trigger the scanner. |
| You are using an older Palm Treo and have not assigned the trigger to Button 1 or 2. | Download the latest ROM for your device, or use the SocketScan utility to change the button assignment to Button 1 or 2. |
| SocketScan is configured to automatically launch Blazer. | Use the SocketScan utility to either deselect Auto-launch or to change the Auto-launch application. |

APPENDIX G

TECHNICAL SUPPORT

For help on SocketScan, tap **Start | Help** on a Pocket PC, or tap on the  icon on a Palm device.

If you have trouble installing or using the SD Scan Card, Socket has different support options to help you.

Online Knowledge Base: Search for articles, Frequently Asked Questions or Hot Topics any time, day or night. <http://support.socketmobile.com/faq>

Online Requests: Register your product and submit a question to our Technical Support Team. <http://support.socketmobile.com/>

By Phone: Contact our Tier 1 Technical Support by calling either:

- USA & Canada Toll-Free: 800-279-1390
- Direct: +1- 510-933-3020

Please refrain from disassembling the scanner. Disassembly of this device will void the product warranty.

LIMITED WARRANTY

Socket Mobile, Inc. warrants this product against defects in material and workmanship, under normal use and service, for one (1) year from the date of purchase.

EXCLUDES: Consumables such as batteries, removable cables, cases, straps, chargers, and CF-to-PC Card adapters (90 day coverage only)

Incompatibility is not a defect covered by the Socket Mobile warranty. During the warranty period, Socket Mobile will, at its option, repair or replace the defective product at no charge when furnished with proof of retail purchase, provided that you deliver the product to Socket Mobile or to an authorized Socket Mobile Service Center.

The returned product must be accompanied by a return material authorization (RMA) number issued by Socket or by a Socket Mobile Authorized Service Center. If you ship the product, you must use the original container or equivalent and you must pay the shipping charges to Socket Mobile. Socket Mobile will pay surface shipping charges back to any location in the contiguous United States. This warranty applies only to the original retail purchaser and is not transferable.

Socket Mobile may, at its option, replace or repair the product with new or reconditioned parts and the returned product becomes the property of Socket Mobile. Socket Mobile warrants the repaired or replaced products to be free from defects in material or workmanship for ninety (90) days after the return shipping date, or for the remainder of the original warranty period, whichever is greater.

This warranty does not cover the replacement of products damaged by abuse, accident, misuse or misapplication, nor as a result of service or modification other than by Socket unless specifically described by Socket in product documentation.

SOCKET MOBILE IS NOT RESPONSIBLE FOR INCIDENTAL OR CONSEQUENTIAL DAMAGES RESULTING FROM BREACH OF ANY EXPRESS OR IMPLIED WARRANTY, INCLUDING DAMAGE TO PROPERTY AND, TO THE EXTENT PERMITTED BY LAW, DAMAGES FOR PERSONAL INJURY. THIS WARRANTY IS IN LIEU OF ALL OTHER WARRANTIES INCLUDING IMPLIED WARRANTIES OF MERCHANTABILITY AND FITNESS FOR A PARTICULAR PURPOSE.

Some states do not allow limitation of implied warranties, or the exclusion or limitation of incidental or consequential damages, so that the above limitations or exclusions may not apply to you. This warranty gives you specific legal rights and you may also have other rights which vary from state to state.

This product may contain fully tested, recycled parts, warranted as if new.

For warranty information, please visit: <http://support.socketmobile.com/>

DISCLAIMER

EXCEPT TO THE EXTENT EXPRESSLY WARRANTED BY SOCKET MOBILE, INC, THIS PRODUCT IS PROVIDED "AS IS" WITHOUT WARRANTY OF ANY KIND, EXPRESS OR IMPLIED, INCLUDING WITHOUT LIMITATION, THE IMPLIED WARRANTIES OF MERCHANTABILITY OR FITNESS FOR A PARTICULAR PURPOSE. EXCEPT TO THE EXTENT REQUIRED BY LAW, SOCKET MOBILE DOES NOT ASSUME ANY PRODUCT LIABILITY ARISING OUT OF, OR IN CONNECTION WITH, THE APPLICATION OR USE OF ANY PRODUCT OR APPLICATION DESCRIBED HEREIN.

LIMITED SOFTWARE WARRANTY

LIMITED WARRANTY. Socket Mobile warrants that the original disk or CD ROM is free from defects for 90 days from the date of delivery of the SOFTWARE.

CUSTOMER REMEDIES. The entire liability of Socket Mobile and your exclusive remedy shall be, at the option of Socket Mobile, either (a) return of the price paid or (b) replacement of the SOFTWARE which does not meet the Socket Mobile Limited Warranty and which is returned to Socket Mobile E with a copy of your receipt. Any replacement SOFTWARE will be warranted for the remainder of the original warranty period or 30 days, whichever is longer. THESE REMEDIES ARE NOT AVAILABLE OUTSIDE OF THE UNITED STATES OF AMERICA.

NO OTHER WARRANTIES. Socket Mobile disclaims all other warranties, either express or implied, including but not limited to implied warranties of merchantability and fitness for a particular purpose, with respect to the SOFTWARE and the accompanying written materials. This limited warranty gives you specific legal rights. You may have others which vary from state to state.

NO LIABILITY FOR CONSEQUENTIAL DAMAGES. In no event shall Socket Mobile or its suppliers be liable for any damages whatsoever (including, without limitation, damages for loss of business profits, business interruption, loss of business information, or other pecuniary loss) arising out of the use of or inability to use the SOFTWARE, even if Socket Mobile has been advised of the possibility of such damages. Because some states do not allow the exclusion or limitation of liability for consequential or incidental damages, the above limitation may not apply to you.

EXPORT LAW ASSURANCES. You may not use or otherwise export or reexport the SOFTWARE except as authorized by United States law and laws of the jurisdiction in which the SOFTWARE was obtained. In particular, but without limitation, none of the SOFTWARE may be used or otherwise exported or reexported (a) into (or to a national or resident of) a United States embargoed country or (b) to anyone on the U.S. Treasury Department's list of Specially Designated Nationals or the U.S. Department of Commerce's Table of Denial Orders. By using the SOFTWARE, you represent and warrant that you are not located in, under control of, or a national or resident of any such country or on any such list.

GOVERNMENT END USERS. If the SOFTWARE is supplied to the U. S. Government, the SOFTWARE is classified as "restricted computer software" as defined in clause 52.227-19 of the FAR. The U. S. Government 's rights to the SOFTWARE are as provided in clause 52.227-19 of the FAR.

CONTROLLING LAW AND SEVERABILITY. This License shall be governed by the laws of the United States and the State of California. If for any reason a court of competent jurisdiction finds any provision, or portion thereof, to be unenforceable, the remainder of this License shall continue in full force and effect.

REGULATORY COMPLIANCE

The Socket SD Scan Card is designed to be compliant with the rules and regulations in locations where they are sold and will be labeled as required. This product is type approved users are not required to obtain license or authorization before using.

Radio Frequency Interference Requirements

This device complies with part 15 of the FCC rules. Operation is subject to the following conditions: (1) This device may not cause harmful interference, and (2) this device must accept any interference received, including interference that may cause undesired operation.

This equipment is also EN55024:1998 and C-Tick compliant. These limits are designed to provide reasonable protection against harmful interference when the equipment is operated in a commercial environment.

This equipment generates, uses, and can radiate radio frequency energy and, if not installed and used in accordance with the instruction manual, may cause harmful interference to radio communications. Operation of this equipment in a residential area is likely to cause harmful interference in which case the user will be required to correct the interference at his or her own expense.

If this equipment does cause harmful interference to radio or television reception, which can be determined by turning the equipment off and on, the user may try to correct the interference by one or more of the following measures:

- Reorient or relocate the receiving antenna of the radio or television.
- Increase the distance separating the equipment and the receiver.
- Connect the equipment to an outlet on a different branch circuit than that of the receiver.
- Consult the dealer or an experienced radio/TV technician for help.

The user may find the following booklet helpful: *How to Identify and Resolve Radio-TV Interference Problems*. This booklet is available from the U.S. Government Printing Office, Washington, D.C. 20402.

Product Disposal

This product must not be disposed of with municipal waste. It is your responsibility to dispose of your waste equipment by handing it over to a designated collection point for the recycling of waste electrical and electronic equipment.

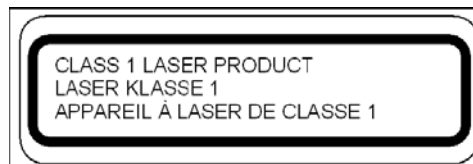


Laser Device — SDSC 3E2

The SD Scan Card 3E2 version of this product described in this User Guide contains a Symbol SE-955 Class 1 laser scan engine, for which the following applies:

- Complies with 21CFR1040.10 and 1040.11 except for deviations pursuant to Laser Notice No. 50, dated July 26, 2001.
- Class 1 Laser devices are not considered to be hazardous when used for their intended purpose. The following statement is required to comply with US and international regulations:

CAUTION: Use of controls, adjustments or performance of procedures other than those specified herein may result in hazardous laser light exposure."



Laser Device — SDSC 3P

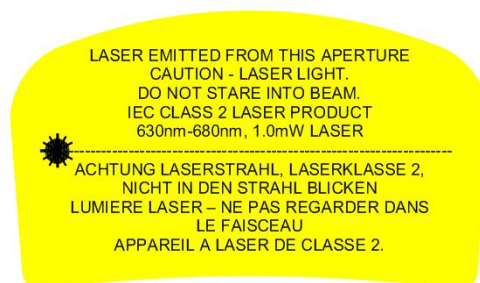
The SD Scan Card 3P version of this product described in this User Guide contains a Symbol SE-955 Class 2 laser scan engine, for which the following applies:

- Complies with 21CFR1040.10 and 1040.11 except for deviations pursuant to Laser Notice No. 50, dated July 26, 2001.

Caution: Use of controls, adjustments or performance of procedures other than those specified herein may result in hazardous laser light exposure.

- Class 2 laser scanners use a low power, visible light diode. As with any very bright light source, such as the sun, the user should avoid staring directly into the light beam. Momentary exposure to a Class 2 laser is not known to be harmful.

A label such as the one below should appear on the end product.



Example of Class 2 Laser Warning Label

11/2009

Printed in U.S.A.



Artisan Technology Group is your source for quality new and certified-used/pre-owned equipment

- FAST SHIPPING AND DELIVERY
- TENS OF THOUSANDS OF IN-STOCK ITEMS
- EQUIPMENT DEMOS
- HUNDREDS OF MANUFACTURERS SUPPORTED
- LEASING/MONTHLY RENTALS
- ITAR CERTIFIED SECURE ASSET SOLUTIONS

SERVICE CENTER REPAIRS

Experienced engineers and technicians on staff at our full-service, in-house repair center

*InstraView*SM REMOTE INSPECTION

Remotely inspect equipment before purchasing with our interactive website at www.instraview.com ↗

WE BUY USED EQUIPMENT

Sell your excess, underutilized, and idle used equipment. We also offer credit for buy-backs and trade-ins. www.artisanng.com/WeBuyEquipment ↗

LOOKING FOR MORE INFORMATION?

Visit us on the web at www.artisanng.com ↗ for more information on price quotations, drivers, technical specifications, manuals, and documentation

Contact us: (888) 88-SOURCE | sales@artisanng.com | www.artisanng.com