



Artisan Technology Group is your source for quality new and certified-used/pre-owned equipment

- FAST SHIPPING AND DELIVERY
- TENS OF THOUSANDS OF IN-STOCK ITEMS
- EQUIPMENT DEMOS
- HUNDREDS OF MANUFACTURERS SUPPORTED
- LEASING/MONTHLY RENTALS
- ITAR CERTIFIED SECURE ASSET SOLUTIONS

SERVICE CENTER REPAIRS

Experienced engineers and technicians on staff at our full-service, in-house repair center

*InstraView*SM REMOTE INSPECTION

Remotely inspect equipment before purchasing with our interactive website at www.instraview.com ↗

WE BUY USED EQUIPMENT

Sell your excess, underutilized, and idle used equipment. We also offer credit for buy-backs and trade-ins. www.artisanng.com/WeBuyEquipment ↗

LOOKING FOR MORE INFORMATION?

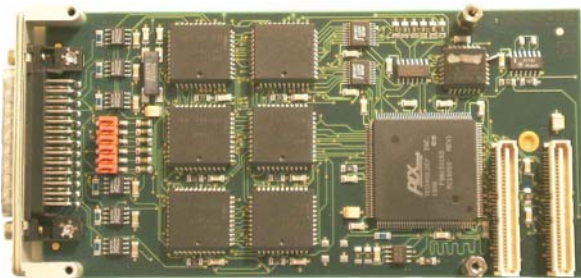
Visit us on the web at www.artisanng.com ↗ for more information on price quotations, drivers, technical specifications, manuals, and documentation

Contact us: (888) 88-SOURCE | sales@artisanng.com | www.artisanng.com

TPMC901 6/4/2 Independent Channels Extended CAN Bus

Application Information

The TPMC901 is a PCI Mezzanine Card (PMC) compatible module. The TPMC901-10 provides six complete CAN bus interfaces using six Intel 82527 CAN controller. Additionally to the standard data and remote frame, all channels support the extended data and remote frame according to the CAN specification 2.0 part A and B (standard 11 bit identifier and extended 29 bit identifier). All channels have the capability to transmit, receive and perform message filtering on extended and standard messages.



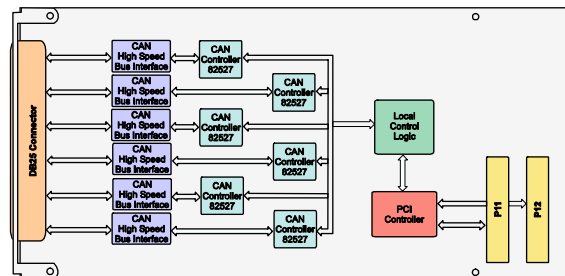
Each channel supports CAN High Speed according to ISO11898 as the physical interface. The bus line termination is selectable by a jumper separate for each bus line pair. The data transfer rates of up to 1 Mbps are supported for a bus line length of 40 m. The TPMC901-11 supports only four CAN bus channels and the TPMC901-12 has two CAN bus channels.

For First Time Users the Engineering Documentation TPMC901-ED is recommended. The Engineering Documentation includes TPMC901-DOC, schematics and data sheets.

Driver support (TPMC901-SW-xx) for different operating systems is available.

Technical Information

- Standard single-width 32 bit PMC module conforming to IEEE P1386.1
- PCI 2.1 compliant interface
- Board size: 149 mm x 74 mm
- CAN bus interface based on Intel 82527 chip
- Support CAN specification 2.0 part A and B (standard and extended data frames)
- Programmable global mask
- 15 message objects of 8 byte data length
- Powerful error handling
- Programmable transfer rates
- Physical interface CAN High Speed (according to ISO 11 898) per channel
- Maximum transfer rate 1 Mbit/s (bus length up to 40 m)



Order Information

TPMC901-10 6 Independent CAN Bus Channels
TPMC901-10R RoHS compliant version of
TPMC901-10

TPMC901-11 4 Independent CAN Bus Channels
TPMC901-11R RoHS compliant version of
TPMC901-11

TPMC901-12 2 Independent CAN Bus Channels
TPMC901-12R RoHS compliant version of
TPMC901-12

TPMC901-DOC User Manual
TPMC901-ED Engineering Documentation, includes
TPMC901-DOC

TA302-10R Cable Kit for modules with DB25 male
connector (RoHS compliant)

TDRV011-SW-42 VxWorks Software Support
TDRV011-SW-65 Windows XP/XPE/2000 Software
Support

TDRV011-SW-72 LynxOS Software Support
TDRV011-SW-82 LiNIX Software Support
TDRV011-SW-95 QNX 6 Software Support F

For other operating systems please contact TEWS.



Artisan Technology Group is your source for quality new and certified-used/pre-owned equipment

- FAST SHIPPING AND DELIVERY
- TENS OF THOUSANDS OF IN-STOCK ITEMS
- EQUIPMENT DEMOS
- HUNDREDS OF MANUFACTURERS SUPPORTED
- LEASING/MONTHLY RENTALS
- ITAR CERTIFIED SECURE ASSET SOLUTIONS

SERVICE CENTER REPAIRS

Experienced engineers and technicians on staff at our full-service, in-house repair center

*InstraView*SM REMOTE INSPECTION

Remotely inspect equipment before purchasing with our interactive website at www.instraview.com ↗

WE BUY USED EQUIPMENT

Sell your excess, underutilized, and idle used equipment. We also offer credit for buy-backs and trade-ins. www.artisanng.com/WeBuyEquipment ↗

LOOKING FOR MORE INFORMATION?

Visit us on the web at www.artisanng.com ↗ for more information on price quotations, drivers, technical specifications, manuals, and documentation

Contact us: (888) 88-SOURCE | sales@artisanng.com | www.artisanng.com