



## Artisan Technology Group is your source for quality new and certified-used/pre-owned equipment

- FAST SHIPPING AND DELIVERY
- TENS OF THOUSANDS OF IN-STOCK ITEMS
- EQUIPMENT DEMOS
- HUNDREDS OF MANUFACTURERS SUPPORTED
- LEASING/MONTHLY RENTALS
- ITAR CERTIFIED SECURE ASSET SOLUTIONS

### SERVICE CENTER REPAIRS

Experienced engineers and technicians on staff at our full-service, in-house repair center

### *InstraView*<sup>SM</sup> REMOTE INSPECTION

Remotely inspect equipment before purchasing with our interactive website at [www.instraview.com](http://www.instraview.com) ↗

### WE BUY USED EQUIPMENT

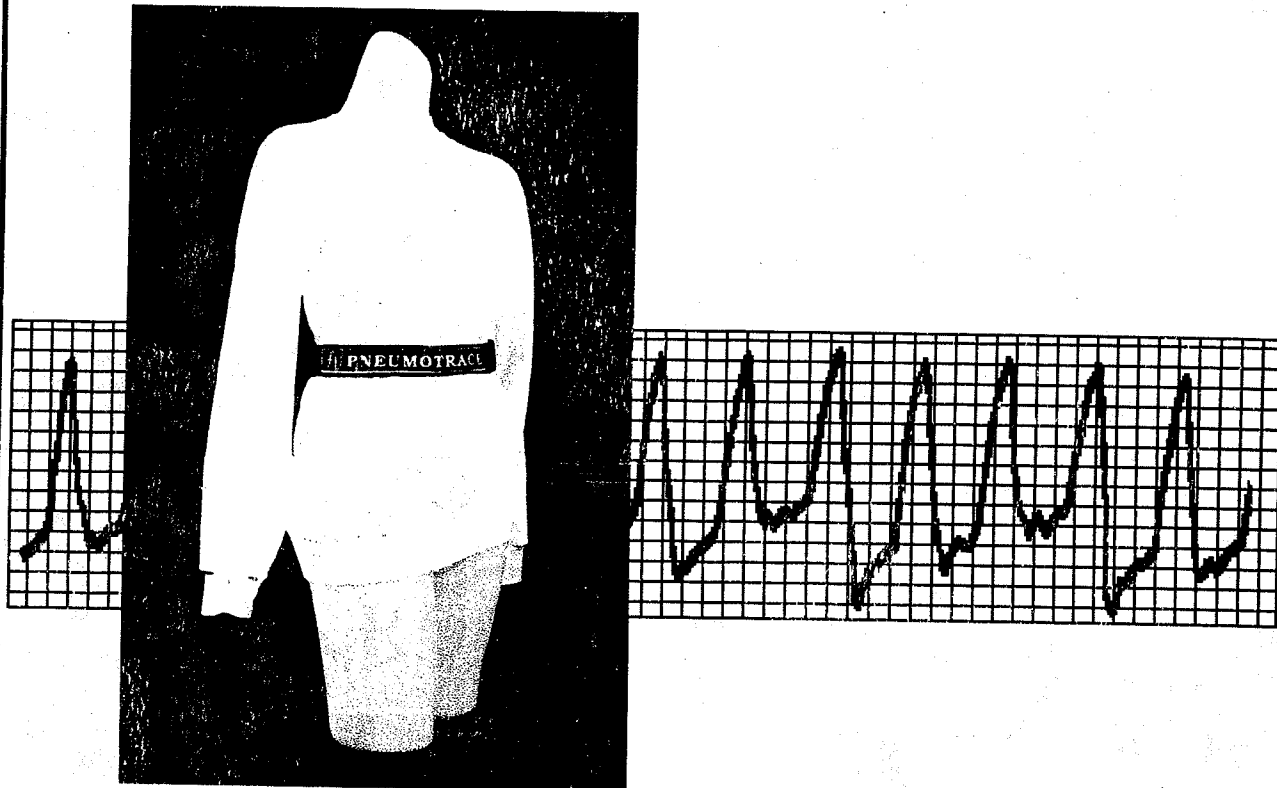
Sell your excess, underutilized, and idle used equipment. We also offer credit for buy-backs and trade-ins. [www.artisanng.com/WeBuyEquipment](http://www.artisanng.com/WeBuyEquipment) ↗

### LOOKING FOR MORE INFORMATION?

Visit us on the web at [www.artisanng.com](http://www.artisanng.com) ↗ for more information on price quotations, drivers, technical specifications, manuals, and documentation

**Contact us:** (888) 88-SOURCE | [sales@artisanng.com](mailto:sales@artisanng.com) | [www.artisanng.com](http://www.artisanng.com)

# INSTRUCTION MANUAL



**model 1132**

**Piezo-Electric  
Respiration Transducer**

**December 1998**

**UFI**



*— serving science with experience —*

545 main st. • morro bay, ca. 93442 • 805-772-1203 • fax 805-772-5056  
home page [www.ufiservingscience.com](http://www.ufiservingscience.com) • email [ufi@ufiservingscience.com](mailto:ufi@ufiservingscience.com)

## WARRANTY

All UFI instruments are warranted against defects in materials and workmanship to the original using purchaser for a period of one year from the date of original purchase. The warranty is void if our inspection shows the equipment has been tampered with, or installed at variance with factory designated procedures or has been subjected to negligence, misuse, accident beyond normal usage, or has had its serial number altered, defaced, or removed.

All questions regarding the warranty stated above should be directed to:

CUSTOMER SERVICE DEPT.  
UFI  
545 Main Street Suite C2  
Morro Bay, CA 93442

NO person, including any dealer or agent is authorized to assume any liability for UFI. When corresponding or communication with UFI concerning your equipment, please include the model number and serial number of the instrument.

UFI instruments and transducers are subject to continuous improvement. We reserve the right to modify any design or specification without notice and without incurring any obligation.

**ALL UFI TRANSDUCERS AND ELECTRODES ARE COVERED BY OUR  
EXCLUSIVE "LIFELINE® WARRANTY" AS OUTLINED BELOW**

### LIFELINE® WARRANTY

If your UFI transducer, electrode, or electrode tester ceases to operate---regardless of the cause---accidental, intentional, or whatever---**RETURN IT TO US.**

We will repair it or replace it with a new one for a minimal handling charge, as listed below:

Model 1010, 1010C, 1020, 1020EC, 1020FC, 1110-----	\$19.50
Model 1030, 1040, 1070-----	\$40.00
Model 1081 & 1081 SNP-----	\$ 8.50
Model 1089 MK II & MK III-----	\$55.00
Model 1130, 1131, 1132-----	\$27.50

# MODEL 1132 PIEZO-ELECTRIC RESPIRATION TRANSDUCER INSTRUCTIONS

## I. INTRODUCTION

The UFI Model 1132 PneumoTrace® is a solid-state transducer which measures respiratory changes in chest or abdominal circumference. It is a piezo-electric device, which responds linearly to changes in elongation, generating a positive voltage as the length increases.

The 1132 PneumoTrace® is SELF EXCITING, i.e., it does NOT require that an "excitation voltage" be supplied. As a result, it may be used as a single-ended input for any polygraph or strip chart recorder. Its nominal output with respiration can be anywhere between 20 and 400 mV. Some attenuation of its output may be necessary. A simple resistor voltage divider will do.

The Model 1132 is designed to work into an input impedance of 1 MΩ.

## SPECIFICATIONS

Size	1.5" wide x 0.125" thick x 9" long
Output	Nominal 20 to 200 mV
Cable length	6' standard, can be up to 50'

**WASHABLE!!!!**

**Covered by UFI's exclusive LIFELINE® Warranty**

## II. ATTACHMENT CONSIDERATIONS

Three fundamental considerations apply to use of the PnuemoTrace® for measuring respiration. These are:

1. Placement on your subject
2. Adjusting the PnuemoTrace® for correct size
3. Adjusting the PnuemoTrace® for correct tension

While none of these techniques are difficult to master, it is wise to practice with the PnuemoTrace® on an experimental subject so that you can achieve a high level of expertise and confidence.

## III. PLACEMENT CONSIDERATIONS

It is best to place the PnuemoTrace® around the body at the level of maximum respiratory expansion. This will vary considerably between erect and supine positions.

The PnuemoTrace® is a sensitive transducer! When the transducer is placed around the chest at the level of the left ventricle, cardiac pulses can be apparent...especially during the pauses between inspiration and expiration.

## IV. SIZE CONSIDERATIONS

The basic PnuemoTrace® is supplied as an elastic belt approximately 9" long. VELCRO™ closures on the ends and VELCRO™ extenders allow adjustment to body circumferences from 12" to over 40"

Using these extenders we have even measured the respiration of a horse! Additional extenders are available for a slight charge, or you can easily purchase sections of VELCRO™ from your local sewing supply store.

## V. TENSION ADJUSTMENT

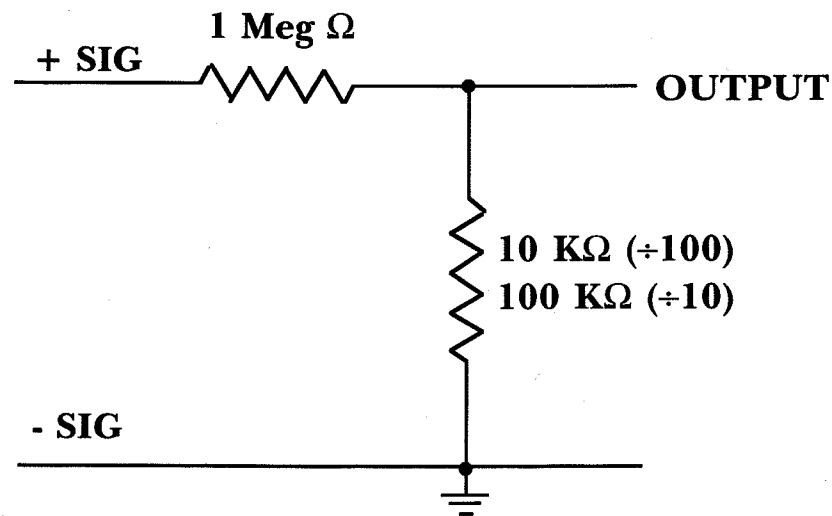
Correct tension adjustment of the PnuemoTrace® is the most critical parameter affecting successful operation. The PnuemoTrace® must initially be snug to maximize sensitivity of the system to respiratory measurement. To achieve proper tension, stretch the belt around the body, and have the subject inspire and hold the breath. At maximum inspiration stretch the belt to nearly maximum extension (so that it is almost taut) and fasten the VELCRO™ closure. The PnuemoTrace® will now record respiratory changes, with maximum sensitivity.

## VI. CONNECTION CONSIDERATIONS

A. The 1132 requires an input impedance of at least 100 K $\Omega$ , but preferably higher and a signal conditioner with a low frequency response extending below 1 Hz.

B. The 1132 can easily produce pulses of several volts or more during handling and placement. If the monitoring equipment cannot handle inputs of this magnitude, the 1132 should be disconnected from the monitoring equipment until after it has been attached to your subject.

C. Some amplifiers will saturate on signals of 4-5 mV. In such a case, a simple resistive voltage attenuator (as shown below) should be inserted between the transducer and the instrument input to reduce the signal to an allowable level.



## VII. MISCELLANEOUS CONSIDERATIONS

DISTANCE----- The PnuemoTrace® has been used at distances of up to 60 feet from the signal conditioning/recording instruments with absolutely no degradation of signal quality. We expect that this distance could be extended to several hundred feet without problems.

RECORDING SMALL ANIMAL RESPIRATION--- UFI has developed a smaller version of the PnuemoTrace® which has been successfully used to record small animal respiration.







## Artisan Technology Group is your source for quality new and certified-used/pre-owned equipment

- FAST SHIPPING AND DELIVERY
- TENS OF THOUSANDS OF IN-STOCK ITEMS
- EQUIPMENT DEMOS
- HUNDREDS OF MANUFACTURERS SUPPORTED
- LEASING/MONTHLY RENTALS
- ITAR CERTIFIED SECURE ASSET SOLUTIONS

### SERVICE CENTER REPAIRS

Experienced engineers and technicians on staff at our full-service, in-house repair center

### *InstraView*<sup>SM</sup> REMOTE INSPECTION

Remotely inspect equipment before purchasing with our interactive website at [www.instraview.com](http://www.instraview.com) ↗

### WE BUY USED EQUIPMENT

Sell your excess, underutilized, and idle used equipment. We also offer credit for buy-backs and trade-ins. [www.artisanng.com/WeBuyEquipment](http://www.artisanng.com/WeBuyEquipment) ↗

### LOOKING FOR MORE INFORMATION?

Visit us on the web at [www.artisanng.com](http://www.artisanng.com) ↗ for more information on price quotations, drivers, technical specifications, manuals, and documentation

**Contact us:** (888) 88-SOURCE | [sales@artisanng.com](mailto:sales@artisanng.com) | [www.artisanng.com](http://www.artisanng.com)