



Artisan Technology Group is your source for quality new and certified-used/pre-owned equipment

- FAST SHIPPING AND DELIVERY
- TENS OF THOUSANDS OF IN-STOCK ITEMS
- EQUIPMENT DEMOS
- HUNDREDS OF MANUFACTURERS SUPPORTED
- LEASING/MONTHLY RENTALS
- ITAR CERTIFIED SECURE ASSET SOLUTIONS

SERVICE CENTER REPAIRS

Experienced engineers and technicians on staff at our full-service, in-house repair center

*InstraView*SM REMOTE INSPECTION

Remotely inspect equipment before purchasing with our interactive website at www.instraview.com ↗

WE BUY USED EQUIPMENT

Sell your excess, underutilized, and idle used equipment. We also offer credit for buy-backs and trade-ins. www.artisanng.com/WeBuyEquipment ↗

LOOKING FOR MORE INFORMATION?

Visit us on the web at www.artisanng.com ↗ for more information on price quotations, drivers, technical specifications, manuals, and documentation

Contact us: (888) 88-SOURCE | sales@artisanng.com | www.artisanng.com

Eingangsgrößen/Input data/Caractéristiques d'entrée

| | | | | |
|--|--|-------------|-------------|-------------|
| Eingangswechselspannung/Frequenz: Input voltage/Frequency: Tension nominale/Fréquence: | Umschaltbar Switchable 110 V AC / 220–240 V AC $\pm 10\%$ 47–400 Hz Commutable | | | |
| Wirkungsgrad (bei Vollast): Efficiency (under full load): Rendement (en charge): | $\geq 75\%$ | $\geq 75\%$ | $\geq 75\%$ | $\geq 80\%$ |

Ausgangsgrößen/Output data/Caractéristiques de sortie

| | V ₁ | V ₁ | V ₁ | V ₁ |
|---|----------------------------|----------------------------|----------------------------|----------------------------|
| Ausgangsgleichspannung, einstellbar: D.C. Output voltage adjustable: Tension nominale de sortie, ajustable: | 5V \pm 0,5V | 12V \pm 1V | 15V \pm 1V | 24V \pm 2V |
| Ausgangsgleichstrom: D.C. Output current: Courant de sortie: | 12 A | 5 A | 4 A | 2,5 A |
| Ripple (bei Vollast): Ripple (at full load): Ondulation: | ≤ 40 mV _{SS} | ≤ 40 mV _{SS} | ≤ 40 mV _{SS} | ≤ 40 mV _{SS} |

Regelgrößen/Regulation data/Régulation

| | | | | |
|---|--------------|--------------|--------------|--------------|
| Netzregelung (V _{IN} $\pm 10\%$ 100% I _{OUT}): Mains regulation: Entrée: | $\leq 0,3\%$ | $\leq 0,2\%$ | $\leq 0,2\%$ | $\leq 0,2\%$ |
| Lastregelung (10...90% I _{OUT} , statisch): Load regulation: En charge: | $\leq 0,2\%$ | $\leq 0,2\%$ | $\leq 0,2\%$ | $\leq 0,2\%$ |
| Regelzeit (10...90% I _{OUT}): Regulation time: Temps de réponse: | 0,8 ms | 0,5 ms | 0,5 ms | 0,5 ms |
| Spannungsausregelung mit Sense-Leitungen: Voltage stabilisation with sense wires: Régulation de sortie avec Sensor: | 0,5 V | 0,5 V | 0,5 V | 0,5 V |

Schutz- und Kontrolleinrichtungen/Protective control devices/Protection et contrôle

| | | | | |
|---|--|--------------------------------------|--------------|--------------|
| Begrenzung Ausgangsstrom: Output current limitation: Limitation de courant de sortie: | >12,5 A | >5,3 A | >4,3 A | >2,7 A |
| Begrenzung Ausgangsspannung (OVP): Over voltage protection (OVP): Limitation tension de sortie (OVP): | 5,5–6,0 V | 13,2–15 V | 16,5–18 V | 26,4–30 V |
| Begrenzung Einschaltstrom: Input surge current limitation: Protection contre les courants de crête: | ja/yes/oui | ja/yes/oui | ja/yes/oui | ja/yes/oui |
| Begrenzung Eingangsspannung: Input voltage limitation: Protection contre les tensions de crête: | ja/yes/oui | ja/yes/oui | ja/yes/oui | ja/yes/oui |
| Netzausfallüberbrückung (220V AC, 100% I _{OUT}): Hold up time: Temps de maintien: | ≥ 20 ms | ≥ 20 ms | ≥ 20 ms | ≥ 20 ms |
| Powerfail-Signal (bei Vollast): Power fail signal (at full load): Signal powerfail (en charge): | ≥ 6 ms bevor prior avant que | V _{OUT} = 4,8 V = 11,5 V | = 14,4 V | = 23 V |

Sicherheit/Safety/Sécurité

| | | | |
|---|--|---|---|
| Isolationsspannungsfestigkeit nach VDE 0804: Dielectric strength to VDE 0804: Isolation renforcée - norme VDE 0804: | Primär/Primary/Primaire Primär/Primary/Primaire Sekundär/Secondary/Secondaire | - Sekundär/Secondary/Secondaire - Erde/Earth/Terre - Erde/Earth/Terre | 2,5 kV _{eff} 1,5 kV _{eff} 0,5 kV _{eff} |
| Schutzklasse I nach VDE 0100: Class of Protection I to VDE 0100: Protection normes VDE 0100: | Steckverbinder mit voreilemendem Kontakt Male connector with projecting earth contact Connecteur avec pin de masse prioritaire | | |

Funkentstörung/Interference suppression/Protection aux parasites

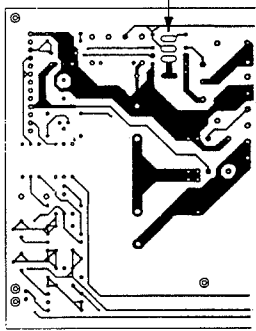
| | |
|--|---------------|
| Funkentstört nach VDE 0871, Kurve B: Suppressed to VDE 0871 curve B: Protection aux normes VDE 0871, Courbe B: | 10 kHz–30 MHz |
|--|---------------|

Betriebsgrößen/Operational data/Caractéristiques de fonctionnement

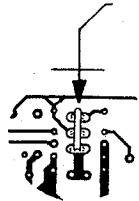
| | |
|--|--|
| Max. Umgebungstemperatur: Maximum ambient temp.: Température ambiante maxi: | (siehe Derating-Kurve) 70°C (see derating curve) (vuie muto de vadallon) |
| Leistungsderating nach Diagramm: Output derating to diagramm: Maintien de la puissance nominale: | 1,6 W/K ab 45°C / 1,6 W/K above 45°C / 1,6 W/K à partir de 45°C |
| Lagertemperatur: Storage temp.: Température de stockage: | -25°... +85°C |

| | |
|--------------------|---|
| OVP _{adj} | Einstellung Begrenzung Ausgangsspannung (OVP) Over voltage protection (OVP) Limitation tension de sortie (OVP) |
| V _{adj} | Ausgangsspannung einstellbar Output voltage adjustable Tension de sortie ajustable |

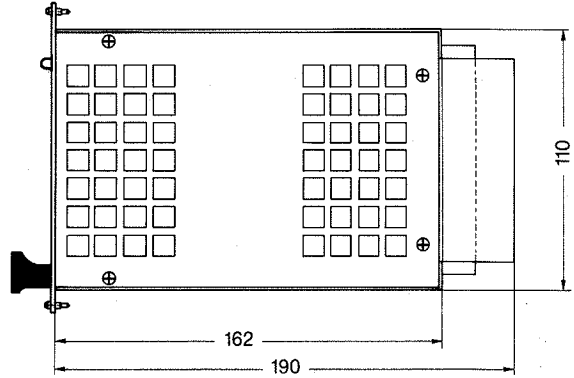
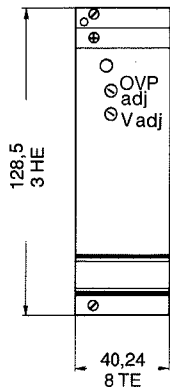
Umschalt-Löt pads
Select Solder-pads
Selecteur de Tension



Für 110 VAC Brücke einlöten
For 110 VAC Jumper sold
Pour 110 VAC Strap soudé

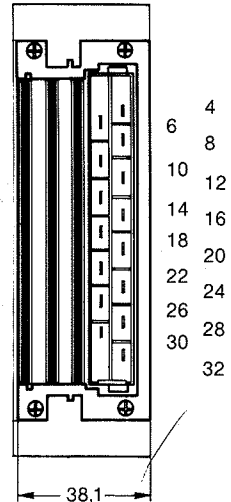
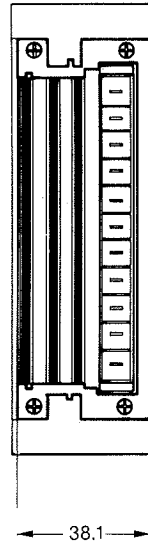


Kupferdraht/wire min. 0,5 mm Ø
Soudé 1 fil de diamètre 0,5 mm minimum



Kontaktbelegung/
Contact allocation/connexions

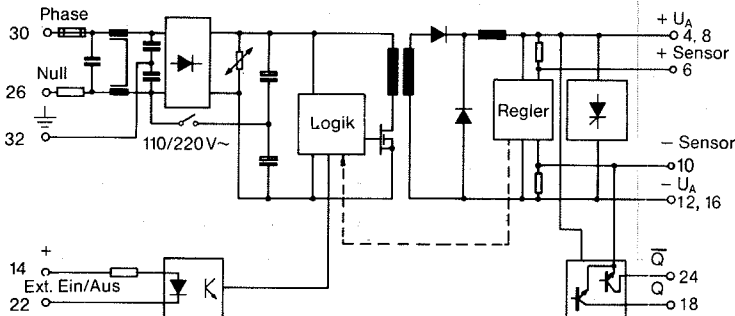
| | H 11 | H 15 |
|---|------|--------|
| + U _{A1} + Output, + Sortie | 2 | 4,8 |
| + Sensor | 5 | 6 |
| - Sensor | 8 | 10 |
| - U _{A1} , - Output, - Sortie | 11 | 12, 16 |
| Ext. Ein/Aus +, Ext. on/off +, Marche/Arrêt + | 14 | 14 |
| Ext. Ein/Aus -, Ext. on/off -, Marche/Arrêt - | 20 | 22 |
| Powerfail-Signal Q | 17 | 18 |
| Powerfail-Signal Q̄ | 23 | 24 |
| Null/Neutral/Neutre, 110/220 V ~ | 26 | 26 |
| Phase 110/220 V ~ | 29 | 30 |
| ⏚ Schutzleiter | 32 | 32 |



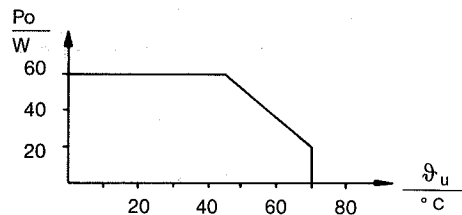
* Sensor muß angeschlossen sein
* Sense lines must be connected
* Les lignes du sensor doivent être connectées

Prinzipschaltbild/Schematic circuit diagram/Schéma de principe

mit Steckverbinder Bauform H 15
with H 15 connector
avec connecteur type H 15



Derating-Kurve/Derating curve/ Courbe de variation





Artisan Technology Group is your source for quality new and certified-used/pre-owned equipment

- FAST SHIPPING AND DELIVERY
- TENS OF THOUSANDS OF IN-STOCK ITEMS
- EQUIPMENT DEMOS
- HUNDREDS OF MANUFACTURERS SUPPORTED
- LEASING/MONTHLY RENTALS
- ITAR CERTIFIED SECURE ASSET SOLUTIONS

SERVICE CENTER REPAIRS

Experienced engineers and technicians on staff at our full-service, in-house repair center

*InstraView*SM REMOTE INSPECTION

Remotely inspect equipment before purchasing with our interactive website at www.instraview.com ↗

WE BUY USED EQUIPMENT

Sell your excess, underutilized, and idle used equipment. We also offer credit for buy-backs and trade-ins. www.artisanng.com/WeBuyEquipment ↗

LOOKING FOR MORE INFORMATION?

Visit us on the web at www.artisanng.com ↗ for more information on price quotations, drivers, technical specifications, manuals, and documentation

Contact us: (888) 88-SOURCE | sales@artisanng.com | www.artisanng.com