



Artisan Technology Group is your source for quality new and certified-used/pre-owned equipment

- FAST SHIPPING AND DELIVERY
- TENS OF THOUSANDS OF IN-STOCK ITEMS
- EQUIPMENT DEMOS
- HUNDREDS OF MANUFACTURERS SUPPORTED
- LEASING/MONTHLY RENTALS
- ITAR CERTIFIED SECURE ASSET SOLUTIONS

SERVICE CENTER REPAIRS

Experienced engineers and technicians on staff at our full-service, in-house repair center

*InstraView*SM REMOTE INSPECTION

Remotely inspect equipment before purchasing with our interactive website at www.instraview.com ↗

WE BUY USED EQUIPMENT

Sell your excess, underutilized, and idle used equipment. We also offer credit for buy-backs and trade-ins. www.artisanng.com/WeBuyEquipment ↗

LOOKING FOR MORE INFORMATION?

Visit us on the web at www.artisanng.com ↗ for more information on price quotations, drivers, technical specifications, manuals, and documentation

Contact us: (888) 88-SOURCE | sales@artisanng.com | www.artisanng.com



applicom® Profibus interface cards allow you to connect your computer to Profibus DP, MPI/S7, FDL Networks.

applicom® is the easiest and trouble free solution to quickly connect your PC-Based application to the industrial world.

07 Jan. 05

Profibus Network Interface Cards

Best choice for SCADA/HMI applications

Features

- Complete and user-friendly package
 - ▶ All components in the box
 - ▶ 2 years of hardware warranty
 - ▶ Local technical support with worldwide representation
 - ▶ 1 driver / 1 configuration tool for all protocols
 - ▶ Graphical User Interface
 - ▶ Network diagnostic and test tools
- COMBO protocol: Run all Profibus protocols simultaneously (DP, S7, MPI, FDL, etc)
- COMBO offer =
 - PFB Full 12Mb + PFB S7/MPI 187.5 Kbps
 - OR
 - PFB Full 12Mb + Serial 38.4Kbps
- On-board processor eliminates data bottle necks, ensuring delivery of time critical information
- Speed: 9.6 Kbps up to 12 Mbps
- Each card onboard an internal Data Base (32 Kwords + 32 Kbits)
- Compatible with:
 - ▶ Simatic® S5 Series (95U, 115U, 135U, 155U)
 - ▶ Simatic® S7 Series (S7-300, S7-400)
- Certified with more 50 major SCADA/HMI packages

Supported OS

Standard package

- Windows 32-bit (XP / 2003 Server / 2000 SP3 / NT SP6)

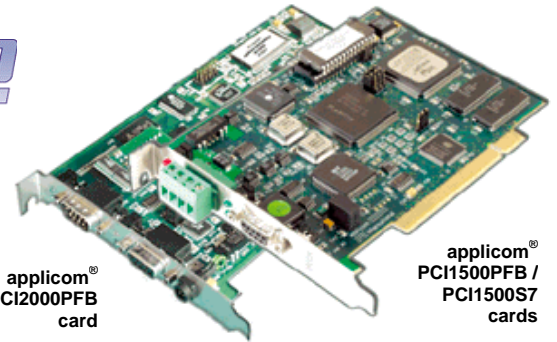
Free Web Download

- Windows XP Embedded, VenturCom RTX, VxWorks, QNX, Linux, Dos

Woodhead is a member of PTO (PROFIBUS Trade Organization), PNO (PROFIBUS Nutzerorganisation e. V.) and France Profibus.



applicom®
PCI2000PFB
card



applicom®
PCI1500PFB /
PCI1500S7
cards



Overview

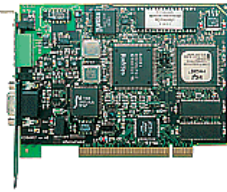

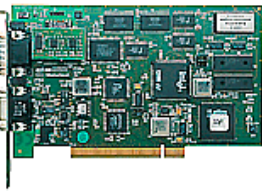
Based on a unique industrial communications concept, applicom® network interface cards are the **fastest, open, trouble-free** solution for interfacing PC-based applications (HMI, SCADA, MES, RDBM, spreadsheets, custom applications) and devices (PLCs, I/O modules, etc.) connected to industrial networks.

Thanks to smart technology, all applicom® cards (on-board processor) are able to execute all management and the processing of communications protocols (polling, frame management, etc.), resulting in **extremely fast, reliable, efficient application performance.**

For your convenient, the standard package includes:

- Console software for configuration and initialization
- Powerful test and diagnostic tools
- Data servers
 - OPC DA 1.0a, 2.05 and 3.0 (including OPC client with VC++ code source)
 - ActiveX control + VBA code source generator for VB6
 - Wonderware I/O server (DAServer, FastDDE, SuiteLink)
- Development libraries for programming languages (DLL):
 - Visual Studio (C, C#, VC++, VB), Delphi, Borland, Windev
 - National Instruments (LabWindows CVI, VI for LabVIEW)

Technical data

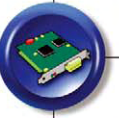
	applicom® PCI1500PFB	applicom® PCI1500S7	applicom® PCI2000PFB
			
Key Benefits	<ul style="list-style-type: none"> • Run all Profibus protocols simultaneously • On-board processor 	<ul style="list-style-type: none"> • Economic solution - Dedicated to Siemens Simatic® S7 • FDL & S7 simultaneously • On-board processor 	<ul style="list-style-type: none"> • COMBO - 2 Profibus ports • Speed up to 12 Mbps • DP-V0 Master / Slave simultaneously • On-board processor
Hardware			
Unit	PCI 2.2, short card, single slot, 5V	PCI 2.2, short card, single slot, 5V	PCI 2.2, short card, single slot, 5V
Processor	Intel 80486DX4	Intel 80486DX4	AMD SC520 - 133 MHz
ASIC	–	–	ASPC2
Memory	4 Mbytes SDRAM	4 Mbytes SDRAM	8 Mbytes SDRAM
Flash Memory	–	–	512 Mbytes
Interruption	Hardware Plug&Play	Hardware Plug&Play	Hardware Plug&Play
DPRAM Address	Hardware Plug&Play (2 Kbytes)	Hardware Plug&Play (2 Kbytes)	Hardware Plug&Play (32 Kbytes)
Discrete Input	Opto-coupled discrete input, Voltage -> +10 to +30 DC or 24 V AC (50-60 Hz)	Opto-coupled discrete input, Voltage -> +10 to +30 DC or 24 V AC (50-60 Hz)	Opto-coupled discrete input with LED -> DC +10 to 30 or AC 24 V (50 to 60 Hz)
Discrete Output	« Watchdog » output contact free from potential, (floating) (24V DC, 0.25A)	« Watchdog » output contact free from potential, (floating) (24V DC, 0.25A)	«WatchDog» output contact free form potential (floating) (24 V DC, 0.25 A) with LED
Dimensions (LxW)	145mm x 106mm (5.70" x 4.17")	145mm x 106mm (5.70" x 4.17")	175mm x 107mm (6.89" x 4.21")
Consumption	6 W	6 W	5.5 W
Operating T°	0° C (32° F) ↔ +70° C (149° F)	0° C (32° F) ↔ +70° C (149° F)	0° C (32° F) ↔ +65° C (149° F)
Storage T°	-40° C (-40° F) ↔ +80° C (176°)	-40° C (-40° F) ↔ +80° C (176°)	-40° C (-40° F) ↔ +80° C (176°)
EMC Compliance⁽¹⁾	EN55022 Class B, EN61000-6-2, EN61000-3-2, EN61000-3-3	EN55022 Class B, EN61000-6-2, EN61000-3-2, EN61000-3-3	EN55022 Class B, EN61000-6-2, EN61000-3-2, EN61000-3-3
Communication port			
Port type	1 Profibus port (EN 50170)	1 Profibus port (EN 50170)	2 Profibus ports⁽²⁾ (EN 50170)
Connector	Profibus D-Sub, 9 pin, female	Profibus D-Sub, 9 pin, female	Profibus D-Sub 9 pin, female
LED Indicator	2 leds: TX / RX	2 leds: TX / RX	2 bicolor leds: TX/RX, Bus fault, Status
Electrical Interface	RS485 optical insulation (500 V)	RS485 optical insulation (500 V)	RS485 optical insulation (500 V)
Baud Rate	9.6 kbps ↔ 1.5 Mbps	9.6 kbps ↔ 1.5 Mbps	Port1: 9.6 kbps ↔ 12 Mbps Port2: 9.6 kbps ↔ 187,5 Kbps
Supported Protocols			
Protocol	<ul style="list-style-type: none"> • Profibus DP-V0 (Master) • S7 / MPI (Master) • PPI/PPI+ (Master) • Send/Receive on FDL • FDL S5 (Master) • Profibus-FMS (on request) 	<ul style="list-style-type: none"> • S7 / MPI (Master) • PPI/PPI+ (Master) • Send/Rec on FDL 	<ul style="list-style-type: none"> • Profibus DP-V0 (Master/Slave) • S7 / MPI (Master) • Send/Receive on FDL • PPI/PPI+⁽³⁾ (Master) • FDL S5⁽³⁾ (Master) • Profibus-FMS⁽³⁾ (on request)

(1): EN55022 Class B, EN61000-6-2, EN61000-3-2, EN61000-3-3




(2): You can replace the Profibus Port2 by a Serial port (RS232 or RS485, speed up to 38.4 Kbps) that is able to run any Serial protocols of the applicom® offer (Modbus RTU / ASCII, AS511, 3964/3964R, TI-Dir , Uni-Telway, DF1, SNPX, etc).

(3): Port2 of the card

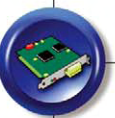
Profibus Network Interface Cards



Technical data

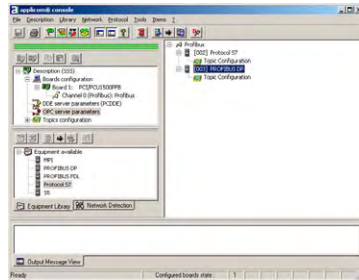
	applicom® PCU1500PFB	applicom® PCU1500S7	applicom® CPCI1000PFB
			
Key Benefits	<ul style="list-style-type: none"> • Run all Profibus protocols simultaneously • Universal PCI 3.3 V / 5V (PCI-X compatible) • On-board processor 	<ul style="list-style-type: none"> • Universal PCI 3.3 V / 5V (PCI-X compatible) • Economic solution - Dedicated to Siemens Simatic® S7 • Run FDL & S7 simultaneously • On-board processor 	<ul style="list-style-type: none"> • Economic solution - Dedicated to Siemens Simatic® S7 • Run FDL & S7 simultaneously • CompactPCI form factor
Hardware			
Unit	PCI 2.2, short card, single slot, 3,3V/5V	PCI 2.2, short card, single slot, 3,3V/5V	CompactPCI board, 5V
Processor	AMD SC520 - 133 MHz	AMD SC520 - 133 MHz	AMD SC520 – 133 MHz
ASIC	–	–	ASPC2
Memory	8 Mbytes SDRAM	8 Mbytes SDRAM	8 Mbyte dynamic RAM
Flash Memory	1 Mbytes	1 Mbytes	512 kbytes
Interrupt	Hardware Plug&Play	Hardware Plug&Play	Hardware Plug&Play
DPRAM Address	Hardware Plug&Play (32 Kbytes)	Hardware Plug&Play (32 Kbytes)	Hardware Plug&Play (32 Kbytes)
Discrete Input	Opto-coupled discrete input, Voltage -> +10 to +30 DC or 24 V AC (50-60 Hz)	Opto-coupled discrete input, Voltage -> +10 to +30 DC or 24 V AC (50-60 Hz)	ns
Discrete Output	« Watchdog » output contact free from potential, (floating) (24V DC, 0.25A)	« Watchdog » output contact free from potential, (floating) (24V DC, 0.25A)	ns
Dimensions (LxW)	175mm x 107mm (6.89" x 4.21")	175mm x 107mm (6.89" x 4.21")	100mm x 160mm (3.93" x 6.29") - 3U
Consumption	5.5 W	5.5 W	5 W (max. 0.8A)
Operating T°	0° C (32° F) up to +65° C (149° F)	0° C (32° F) up to +65° C (149° F)	0° C (32° F) ↔ +65° C (149° F)
Storage T°	-40° C (-40° F) up to +85° C (185° F)	-40° C (-40° F) up to +85° C (185° F)	-40° C (-92° F) up to +80° C (176° F)
EMC Compliance⁽¹⁾	EN55022 Class B, EN61000-6-2, EN61000-3-2, EN61000-3-3	EN55022 Class B, EN61000-6-2, EN61000-3-2, EN61000-3-3	EN55022 Class B, EN61000-6-2, EN61000-3-2, EN61000-3-3
Communication port			
Port type	1 Profibus port (EN 50170)	1 Profibus port (EN 50170)	1 Profibus port (EN 50170)
Connector	Profibus D-Sub, 9 pin, female	Profibus D-Sub, 9 pin, female	Profibus D-Sub, 9 pin, female
LED Indicator	2 leds: TX / RX	2 leds: TX / RX	1 Status LED / 1 Bus Fault LED
Electrical Interface	RS485 optical insulation (500 V) (optional: Profibus D-Sub 9-pin attach vertical connector with diagnostics)	RS485 optical insulation (500 V) (optional: Profibus D-Sub 9-pin attach vertical connector with diagnostics)	RS485 with galvanic insulation (500 volts)
Speed	from 9600 bps to 1,5 Mbps	from 9600 bps to 1,5 Mbps	9600 kbps ↔ 12 Mbps
Supported Protocols			
Protocol	<ul style="list-style-type: none"> • Profibus DP-V0 (Master) • S7 / MPI (Master) • PPI/PPI+ (Master) • Send/Receive on FDL • FDL S5 (Master) • Profibus-FMS (on request) 	<ul style="list-style-type: none"> • S7 / MPI (Master) • PPI/PPI+ (Master) • Send/Rec on FDL 	<ul style="list-style-type: none"> • Profibus DP-V0 (Master & Slave) • S7 / MPI (Master) • PPI/PPI+ (Master) • Send/Rec on FDL

Profibus Network Interface Cards

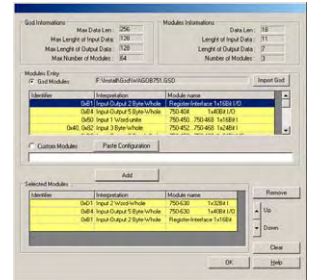


Software tools

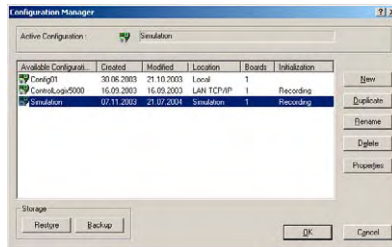
The core of applicom[®] solutions lies in effective software tools enabling fast integration of industrial communication into your applications.



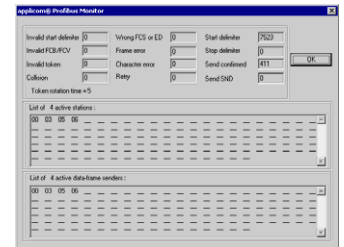
- Configuration Software -



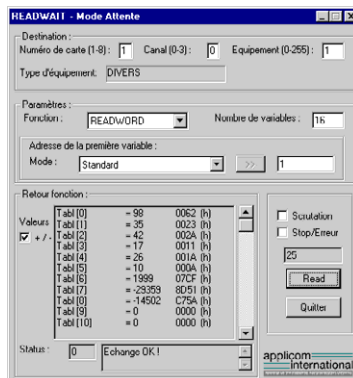
- GSD Editor -



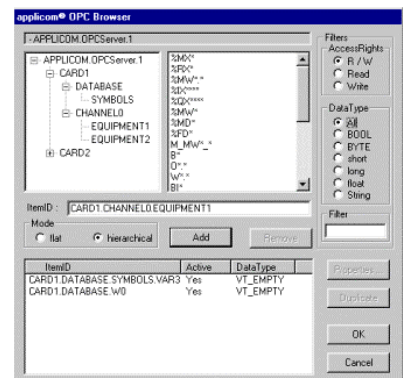
- User's configuration manager -



- Profibus Troubleshooting Tool -



- Testing tools -



- OPC Browser -

Ordering Information

Part Number	Description
APP-PS7-PCI	applicom [®] PCI1500S7 Profibus S7/MPI 1.5Mb PCI card (5V)
APP-PFB-PCI	applicom [®] PCI1500PFB Full Profibus 1.5Mb PCI card (5V)
APP-PF2-PCI	applicom [®] PCI2000PFB combo Full Profibus 12Mb + Profibus MPI 187.5 PCI card (5V)
APP-PFB-PCU	applicom [®] PCU1500PFB Full Profibus 1.5Mb card, Universal PCI 3.3V / 5V (PCI-X compatible)
APP-PS7-PCU	applicom [®] PCU1500S7 Profibus dedicated Simatic S7 1.5Mb card, Universal PCI 3.3V / 5V (PCI-X compatible)
APP-PFB-CPCI	applicom [®] CPCI1000PFB Full Profibus 12Mb card, Compact PCI
PA9D01-42	Profibus D-Sub 9-pin attach vertical connector with Diagnostics

Other related products: Combo Ethernet+Profibus (PCI2000ETH card). Form factors available (ISA, CompactPCI, PC/104). Profibus-DP M/S only (PCI-DPIO card). Low range S7/MPI solution (DRL-MPI-PCU card).

To contact us: www.woodhead.com

Europe: France, +33 2 32 96 04 20 – Germany, +49 711 782 3740 – Italy, +39 010 59 30 77 – United Kingdom, +44 1495 356300

North America: Canada, +1 519 725 5136 – USA, +1 800 225 7724

Asia: China, +86 21 50328080 – Singapore, +65 6261 6533 – Japan, +81 3 5791 4621

This document is for informational purposes only and is not contractual. We reserve the right to change or discontinue a product or service without notice. All rights reserved. © 2004 Woodhead International. All rights reserved.





Artisan Technology Group is your source for quality new and certified-used/pre-owned equipment

- FAST SHIPPING AND DELIVERY
- TENS OF THOUSANDS OF IN-STOCK ITEMS
- EQUIPMENT DEMOS
- HUNDREDS OF MANUFACTURERS SUPPORTED
- LEASING/MONTHLY RENTALS
- ITAR CERTIFIED SECURE ASSET SOLUTIONS

SERVICE CENTER REPAIRS

Experienced engineers and technicians on staff at our full-service, in-house repair center

*InstraView*SM REMOTE INSPECTION

Remotely inspect equipment before purchasing with our interactive website at www.instraview.com ↗

WE BUY USED EQUIPMENT

Sell your excess, underutilized, and idle used equipment. We also offer credit for buy-backs and trade-ins. www.artisanng.com/WeBuyEquipment ↗

LOOKING FOR MORE INFORMATION?

Visit us on the web at www.artisanng.com ↗ for more information on price quotations, drivers, technical specifications, manuals, and documentation

Contact us: (888) 88-SOURCE | sales@artisanng.com | www.artisanng.com