



Artisan Technology Group is your source for quality new and certified-used/pre-owned equipment

- FAST SHIPPING AND DELIVERY
- TENS OF THOUSANDS OF IN-STOCK ITEMS
- EQUIPMENT DEMOS
- HUNDREDS OF MANUFACTURERS SUPPORTED
- LEASING/MONTHLY RENTALS
- ITAR CERTIFIED SECURE ASSET SOLUTIONS

SERVICE CENTER REPAIRS

Experienced engineers and technicians on staff at our full-service, in-house repair center

*InstraView*SM REMOTE INSPECTION

Remotely inspect equipment before purchasing with our interactive website at www.instraview.com ↗

WE BUY USED EQUIPMENT

Sell your excess, underutilized, and idle used equipment. We also offer credit for buy-backs and trade-ins. www.artisanng.com/WeBuyEquipment ↗

LOOKING FOR MORE INFORMATION?

Visit us on the web at www.artisanng.com ↗ for more information on price quotations, drivers, technical specifications, manuals, and documentation

Contact us: (888) 88-SOURCE | sales@artisanng.com | www.artisanng.com



Profibus Solution from Woodhead – dramatically improving communication and the quality of the information you acquire and use.

Empowering you to access real-time information means fast data exchange, helpful diagnostics, full configurable and easy access to I/O data.

Profibus PFB3 Interface Card

Best choice for controlling I/O over Profibus

Features

- Simultaneous execution of Profibus protocols (DP Master, DP Slave and Send/Receive on FDL)
- Manage DP-V1 services
- OPC Data Access Server v3.0
- Easy portability to various operating systems through a dual port RAM interface
- Process-consistent data at the device level
- Internal Flash memory for storage of configuration data
- Fast commissioning through DP Configuration and Network Diagnostic software
- Easy access to DP-V1 and PA variables from FDT frame applications
- MS-Windows 2000/NT/XP drivers
- 24/7 Global technical support

Protocols

- Profibus-DP Master V0 Class1 & 2
- Profibus-DP Master V1 Class1 & 2
- Profibus DP Slave V0
- Profibus FDL (Layer 2)

Typical applications

- PC-Based Control, robot control
- Operator Interface, HMI / SCADA
- Network Configuration, Troubleshooting and Diagnostics
- Device Development

Woodhead is a member of:

- PTO, PNO & France Profibus Trade organizations
- FDT Joint Interest Group



Overview

The SST™ Profibus Generation III (PFB3) PCI interface card can connect your PCI bus computer to Profibus DP-V0, DP-V1 and FDL networks. It provides high-speed deterministic communication between automation systems and their decentralized peripherals.

The PFB3 interface card has been developed for designers of automation and control systems looking for reliable and high performance communication solutions. Our products will enable you to shorten the design and startup times for your installations.

Configuration & Diagnostic tools

The *Profibus Console* is an optional Windows 32-bits application (P/N: SST-PB3- CNF), which allows easy commissioning of Profibus DP-V0 and DP-V1 networks. It offers a real productivity gain to the system integrators by reducing times of engineering and installation to obtain a short return of investment.

Very intuitive, the Console graphic interface makes possible to set up the Profibus devices thanks to the use of DP-V0 and DP-V1 GSD files supplied by the manufacturer. The Console also includes a device library (including a large number of GSD for frequently used devices) at which the user can easily add new ones. Thanks to this library, the devices are automatically detected during bus scanning then the user just has to Drag & Drop the device in its active configuration.

The Console offers comprehensive diagnostic helps. When this mode is selected, all the status of the devices are cyclically refreshed and presented under animated icons informing of the right execution of data exchanges. For devices in error, the cause is directly accessible through plaintext. Additional functions are including as: data flow control, statistic counters, read/write to process variable, access to DP-V1 services, etc.



Configuration console



DP-V1 parameters



Diagnostic and Test tools

Profibus PFB3 Interface Card



Software interfaces

API Library (DLL)

The standard package includes an open documented memory map interface with C source code example of Windows 32-bit DLLs and drivers. This library enables you to develop powerful control application for Windows environment or any other operating system.

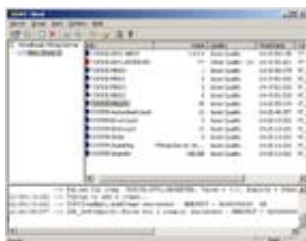
OPC Server DA 3.0

The OPC server is an optional component (S/N: SST-PB3-OPC) that allows direct connection to all Windows applications supporting OPC Client.

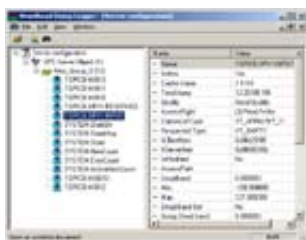
OPC Server is compliant with v3.0 and v2.05a Data Access specifications.

OPC Server features includes:

- OPC Tag Browsing
- Automatic optimization of Data Exchange
- Easy access to DP-V1 Class1 & Class2 variables
- Diagnostic tools
- OPC Client for testing purpose



OPC Tag Browser



OPC Diagnostic Tool

FDT CommDTM

Woodhead supplies a communication DTM in accordance with FDT (Field Device Tool) 1.2 specifications.

SST CommDTM allows setting up Profibus DP-V1 and PA networks using existing FDT engineering tools such as: Pactware, FieldCare, MM Container, etc.

Technical Data

| | |
|---------------------------|--|
| Bus interface | 32-bit short PCI compatible (operates on PCI 2.2 and 2.3 compliant systems and PCI 2.1 compliant systems that have implemented the optional 3.3V supply voltage) |
| Interruption | Supports standard PCI interrupts |
| DPRAM Address | Shared RAM with Host interface |
| Flash Memory | 1Mbytes SDRAM; Store network parameters |
| Profibus ASIC | Siemens ASPC2 LAN controller for Profibus functions |
| Dimensions (L x W) | 175mm x 107mm (6.89" x 4.21") |
| Consumption | 300mA at 5V typical, 450mA at 3V typical |
| Operating T° | 0 to +60° C (32 to 140° F) |
| Storage T° | -40 to +85° C (-40 to 185° F) |
| Hardware Watchdog | Detect control application freezing |
| CE Compliance | EN 61326:1998 including amendments A1 and A2 |

1 Profibus port

| | |
|-----------------------|--|
| Port Type | RS485, optically isolated (EN 50170) |
| Connector type | Standard Profibus 9-pin Sub-D connector |
| LED indicators | Diagnostic LED for instantaneous status of network error |
| Speed | 9.6 kbit/s to 12 Mbit/s (Auto baud rate detection) |

Protocol specifications

Master or Master/Slave DPV0 Class 1 & Class 2

- | | |
|--|---|
| <ul style="list-style-type: none"> • Active station, • Direct access to Data Exchange buffer • Data Word or Device consistency • Automatic or Manual I/O Mapping • Max. Slave number=126 • DP master cycle time configurable | <ul style="list-style-type: none"> • Max. Mapped data => In=16 Kb, Out=16 Kb • Network, Slave and Master Events • Slave Diag and Extended Slave Diag • Max. Local Slave Size => In=244 bytes, Out=244 bytes |
|--|---|

Slave DPV0 only

- | | |
|---|---|
| <ul style="list-style-type: none"> • Passive station | <ul style="list-style-type: none"> • Max. Local Slave Size => In=244 bytes, Out=244 bytes |
|---|---|

Master DPV1 Class 1 & Class 2

- | | |
|---|--|
| <ul style="list-style-type: none"> • MSAC1_Read • MSAC1_Write • MSAC2_Initiate | <ul style="list-style-type: none"> • MSAC2_Read • MSAC2_Write • MSAC2_Abort |
|---|--|

DPV0 and DPV1 samples in C source code; Full documented DPRAM and DLL library.

Ordering information

| Part Number | Description |
|-----------------|--|
| SST-PB3-PCU | Profibus PFB3 interface card (DPM/DLL only), Universal PCI bus |
| SST-PB3-PCU-B25 | Profibus PFB3 interface card (DPM/DLL only), Universal PCI bus, Bulk of 25 |
| SST-PB3-OPC | OPC Server for Profibus PFB3 interface card (link to a card "serial number") |
| SST-PB3-CNF-U | Development platform & Stand alone Console (USB key) |
| SST-PB3-CNF-P | Development platform & Stand alone Console (Paralell key) |

Related products

| Part Number | Description |
|-------------|---|
| PA9D01-42 | Profibus metal connector sub-D 9 with integrated Diagnostic, vertical |
| PA9S01-42 | Profibus metal connector sub-D 9 without Diagnostic, vertical |

For more information or to order, contact your local Authorized Woodhead Software & Electronics Distributor or Woodhead representative.



Artisan Technology Group is your source for quality new and certified-used/pre-owned equipment

- FAST SHIPPING AND DELIVERY
- TENS OF THOUSANDS OF IN-STOCK ITEMS
- EQUIPMENT DEMOS
- HUNDREDS OF MANUFACTURERS SUPPORTED
- LEASING/MONTHLY RENTALS
- ITAR CERTIFIED SECURE ASSET SOLUTIONS

SERVICE CENTER REPAIRS

Experienced engineers and technicians on staff at our full-service, in-house repair center

*InstraView*SM REMOTE INSPECTION

Remotely inspect equipment before purchasing with our interactive website at www.instraview.com ↗

WE BUY USED EQUIPMENT

Sell your excess, underutilized, and idle used equipment. We also offer credit for buy-backs and trade-ins. www.artisanng.com/WeBuyEquipment ↗

LOOKING FOR MORE INFORMATION?

Visit us on the web at www.artisanng.com ↗ for more information on price quotations, drivers, technical specifications, manuals, and documentation

Contact us: (888) 88-SOURCE | sales@artisanng.com | www.artisanng.com