



## Artisan Technology Group is your source for quality new and certified-used/pre-owned equipment

- FAST SHIPPING AND DELIVERY
- TENS OF THOUSANDS OF IN-STOCK ITEMS
- EQUIPMENT DEMOS
- HUNDREDS OF MANUFACTURERS SUPPORTED
- LEASING/MONTHLY RENTALS
- ITAR CERTIFIED SECURE ASSET SOLUTIONS

### SERVICE CENTER REPAIRS

Experienced engineers and technicians on staff at our full-service, in-house repair center

### *InstraView*<sup>SM</sup> REMOTE INSPECTION

Remotely inspect equipment before purchasing with our interactive website at [www.instraview.com](http://www.instraview.com) ↗

### WE BUY USED EQUIPMENT

Sell your excess, underutilized, and idle used equipment. We also offer credit for buy-backs and trade-ins. [www.artisanng.com/WeBuyEquipment](http://www.artisanng.com/WeBuyEquipment) ↗

### LOOKING FOR MORE INFORMATION?

Visit us on the web at [www.artisanng.com](http://www.artisanng.com) ↗ for more information on price quotations, drivers, technical specifications, manuals, and documentation

**Contact us:** (888) 88-SOURCE | [sales@artisanng.com](mailto:sales@artisanng.com) | [www.artisanng.com](http://www.artisanng.com)

# 3400 Series Flat Panel Industrial PCs



Xycom Automation's open solutions connect to other automation standards with industrial PCs that are tough enough for plant floor use. (Our standard

PC configurations meet the strict specifications for use in hazardous locations and Europe's CE mark.) Based on CPU boards designed specifically for industrial automation, these systems provide the capabilities required by demanding applications. With an installed base of 180,000 systems, our industrial PC products are successfully applied in manufacturing and continuous process environments.

## **Easy-to-Read, Sharp Displays**

We offer a range of displays from 5.9"  $\frac{1}{4}$  VGA

to 12.1" XGA displays. An optional analog resistive touchscreen provides a flexible, easy-to-use interface for operator input. Keypad options provide legend and keycode flexibility while maximizing display space.

## **Meets High Standards**

To survive on the plant floor, our PCs meet NEMA 4/4X/12 front panel, FCC, UL, and European CE mark requirements. Xycom Automation also leads the industry in reliability, service, and support with an optional five year warranty unmatched in the industry.

## **Open Platform**

Built-in Ethernet allows you to connect these units to networks at startup with little effort. With a preloaded Windows operating system, you can communicate with locally or Ethernet connected products and databases through Microsoft and other enabling technologies—including ActiveX, OPC, and standard DDE. Exchange plant floor data with office applications and see what's happening from the plant floor to corporate headquarters.

## **Fits Your Needs**

You can configure and reconfigure Xycom Automation's industrial PCs to fit nearly any application through a wide variety of standard technologies. Our industrial PCs make it easy for end users and vendors to use cost-effective industry-standard components, storage options, PC/104 expansion, and programmable keypads for application specific requirements.

## **FEATURES**

- Preloaded with MS-DOS, Windows® 95, or Windows NT® operating system
- Built-in 10/100 BaseT Ethernet port
- PC/104 expansion
- 5.9" to 12.1" flat panel color displays
- Reprogrammable keypad, analog resistive touchscreen, or both for operator input
- AMD™ 5X86 processor
- Up to 64 MB DRAM
- Floppy drive option
- 2.1 GB hard drive
- Flash drive option
- Parallel, RS-232 and RS-485, PS/2 mouse and keyboard, and VGA ports
- IrDA-compatible infrared port
- NEMA 4/4X/12 front panel
- UL listed for hazardous locations: Class I, Division 2, Groups A, B, C, D; Class II, Division 2, Groups F and G

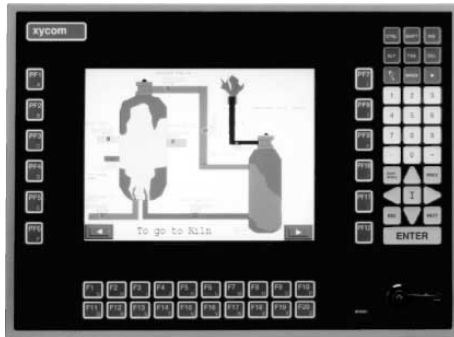
DS-340002(D)

**XYCOM**  
AUTOMATION  
Open the Possibilities™

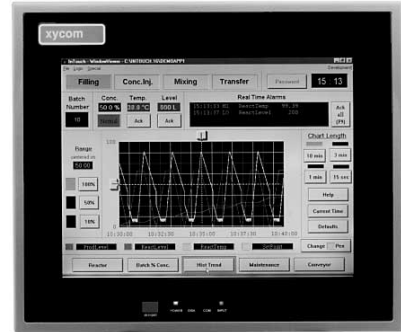
# PRODUCT CONFIGURATIONS



Model	3408KP	3408T
Display	7.7" flat panel color display, 640 x 480 (VGA)	7.7" flat panel color display, 640 x 480 (VGA)
Operator Input	51-position keypad	Analog resistive touchscreen
Preloaded OS	Windows NT or 95	Windows NT or 95
Ethernet	Built-in 10/100 BaseT	Built-in 10/100 BaseT
Expansion	PC/104 expansion (up to two cards)	PC/104 expansion (up to two cards)



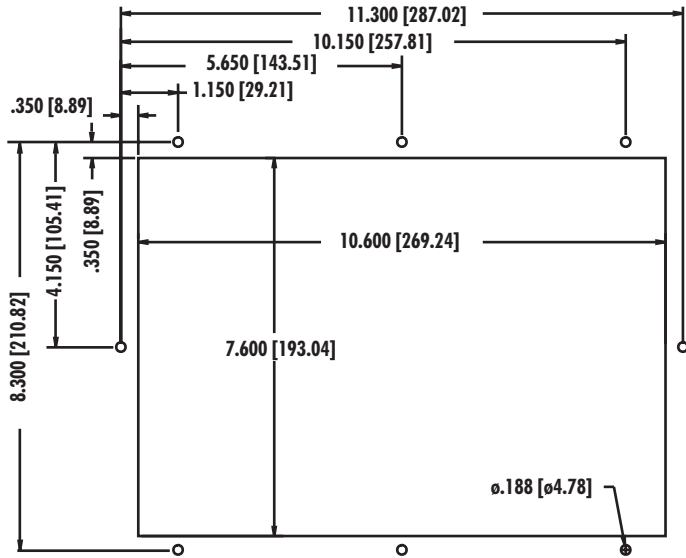
Model	3410KP(T)	3410T
Display	10.4" flat panel color display, 640 x 480 (VGA)	10.4" flat panel color display, 640 x 480 (VGA)
Operator Input	63-position keypad (touchscreen option)	Analog resistive touchscreen
Preloaded OS	Windows NT or 95	Windows NT or 95
Ethernet	Built-in 10/100 BaseT	Built-in 10/100 BaseT
Expansion	PC/104 expansion (up to two cards)	PC/104 expansion (up to two cards)



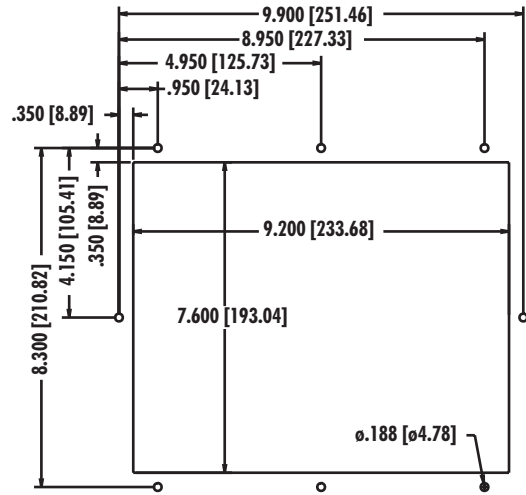
<b>Model</b>	<b>3412KP(T)</b>	<b>3412T</b>
<b>Display</b>	12.1" flat panel color display, 800 x 600 (SVGA)	12.1" flat panel color display, 800 x 600 (SVGA)
<b>Operator Input</b>	63-position keypad (touchscreen option)	Analog resistive touchscreen
<b>Floppy Drive</b>	Option	Option
<b>Preloaded OS</b>	Windows NT or 95	Windows NT or 95
<b>Ethernet</b>	Built-in 10/100 BaseT	Built-in 10/100 BaseT
<b>Expansion</b>	PC/104 expansion (up to two cards)	PC/104 expansion (up to two cards)

# PRODUCT AND MOUNTING DIMENSIONS

## 3408KP Mounting



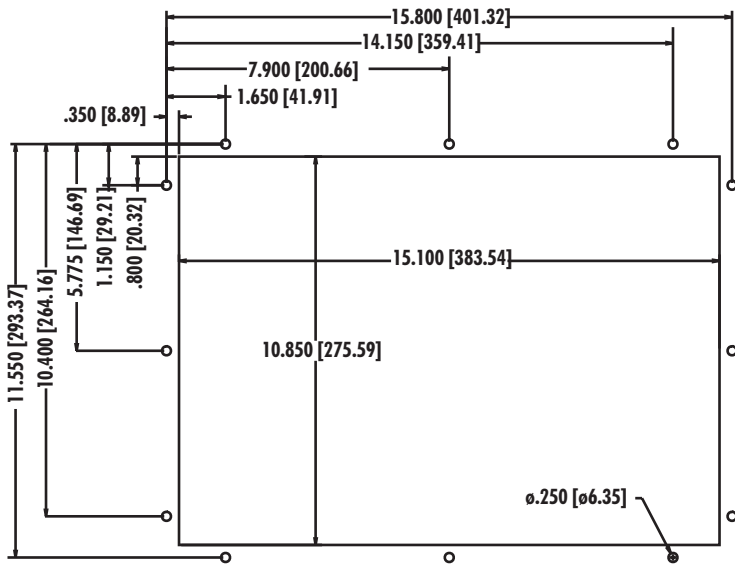
## 3408T Mounting



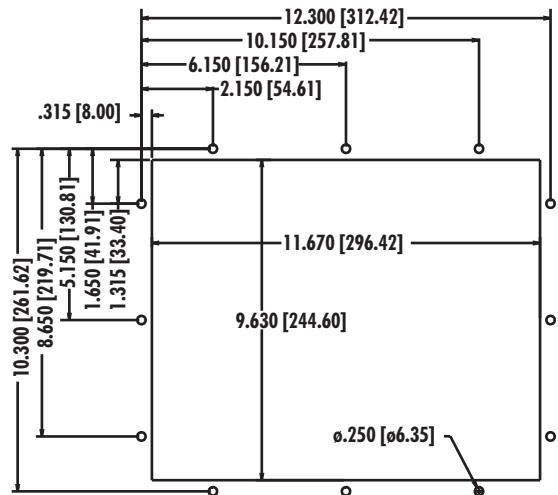
## 3408 Unit Dimensions

Model	3408KP	3408T
Height	9.00" (228.6 mm)	9.00" (228.6 mm)
Width	12.00" (304.8 mm)	10.60" (269.2 mm)
Depth	4.30" (109.2 mm)	4.20" (106.7 mm)
Mounting Depth	3.30" (83.8 mm)	3.20" (81.3 mm)
Weight	9 lbs (4.1 kg)	9 lbs (4.1 kg)

## 3410KP(T) Mounting



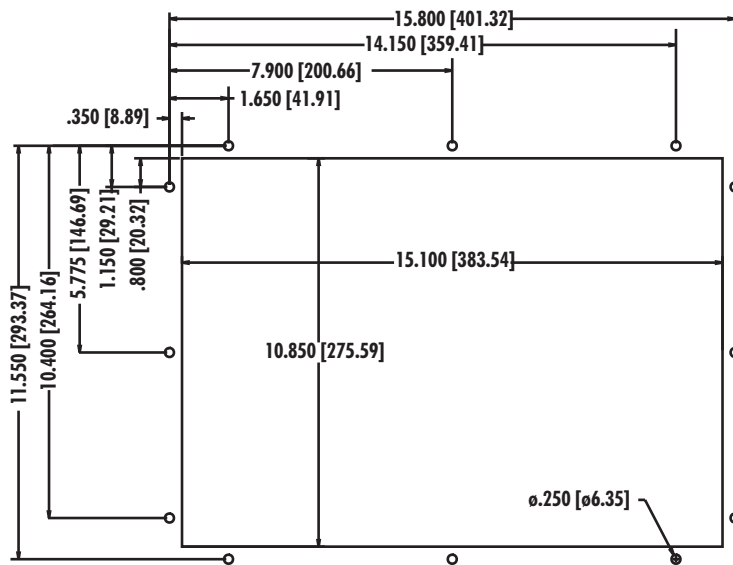
## 3410T Mounting



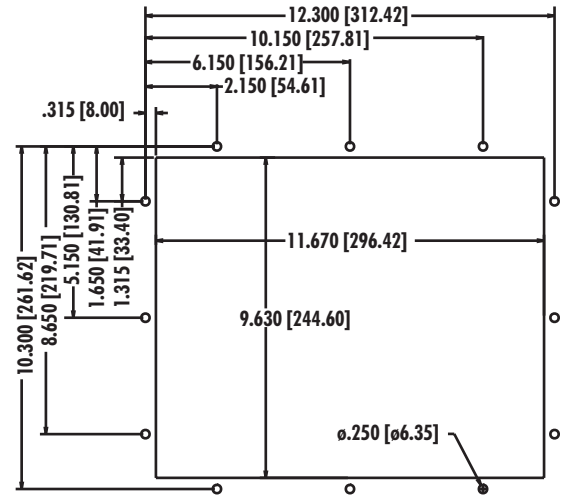
## 3410 Unit Dimensions

Model	3410KP(T)	3410T
Height	12.25" (311.5 mm)	11.00" (279.4 mm)
Width	16.50" (419.1 mm)	13.00" (330.2 mm)
Depth	4.50" (114.3 mm)	4.50" (114.3 mm)
Mounting Depth	3.50" (88.9 mm)	3.50" (88.9 mm)
Weight	12 lbs (5.5 kg)	11 lbs (5.0 kg)

### 3412KP(T) Mounting



### 3412T Mounting



### 3412 Unit Dimensions

Model	3412KP(T)	3412T
Height	12.25" (311.5 mm)	11.00" (279.4 mm)
Width	16.50" (419.1 mm)	13.00" (330.2 mm)
Depth	4.50" (114.3 mm)	4.50" (114.3 mm)
Mounting Depth	3.50" (88.9 mm)	3.50" (88.9 mm)
Weight	12 lbs (5.5 kg)	11 lbs (5.0 kg)

# PRODUCT SPECIFICATIONS AND RATINGS

## Environmental

	Operating	Nonoperating
<b>Thermal</b>	0C to 50C	-20C to 60C
<b>Humidity</b>	20% to 80% RH, noncondensing	20% to 80% RH, noncondensing
<b>Shock<sup>a</sup></b>	15g peak acceleration, 11 msec duration	30g peak acceleration, 11 msec duration
<b>Vibration 5-2000 Hz<sup>a</sup></b>	.006" peak to peak displacement 1.0g maximum acceleration	.015" peak to peak displacement 2.5g maximum acceleration
<b>Altitude</b>	Sea level to 10,000 ft.	Sea level to 40,000 ft.

<sup>a</sup>These values are with solid state hard drives and not rotating media drives.

## Electrical

<b>Power supply</b>	40 Watt power
<b>AC power</b>	90 to 250V AC, autoranging, 50-60 Hz, 1A (maximum)
<b>DC power (option)</b>	18 to 36V DC, 24V nominal, 2.5A (maximum)
<b>Available power<sup>b</sup></b>	+5V@.8A +12V@.25A -12V@.25A

<sup>b</sup>Total not to exceed 6 watts

## Front Panel

- NEMA 4/4X/12 IP65

## Regulatory Compliance

### CE

- EN 55022
- EN 50082-2
- EN 60950

### FCC

- 47 CFR, Part 15, Class A

## Safety Agency Approvals

### UL

- UL 1950 ITE
- UL 1604

### CUL

- CSA-C22.2, #950 ITE
- CSA-C22.2, #213

# ORDERING INFORMATION

To create an order number, follow the conventions defined by the example order numbers and product configurations.

## Example Order Number

Order Number	Description
3408T-513332-A	3400 series workstation with 7.7" color display, analog resistive touchscreen, 32 MB RAM, Windows 95 OS preloaded
3410KP-513364-B	3400 series workstation with 10.4" color display, reprogrammable keypad, 64 MB RAM, Windows NT OS preloaded

## Product Configurations

34 -5133

### Color Flat Panel Display and Operator Input

- 08KP 7.7" display with keypad
- 08T 7.7" display with touchscreen
- 10KP 10.4" display with keypad
- 10T 10.4" display with touchscreen
- 10KPT 10.4" display with keypad and touchscreen
- 12KP 12.1" display with keypad
- 12T 12.1" display with touchscreen
- 12KPT 12.1" display with keypad and touchscreen

### DRAM

- 16 16 MB DRAM
- 32 32 MB DRAM
- 64 64 MB DRAM

### Power Supply

- blank AC power supply
- 24V 24V DC power supply

### Floppy Drive

- blank No floppy
- F External floppy drive intalled

### Internal Hard Drive

- blank 2.1 GB hard drive
- 16M 16 MB compact flash drive
- 24M 24 MB compact flash drive
- 48M 48 MB compact flash drive

### Operating System

- blank MS-DOS
- A Windows 95<sup>a</sup>
- B Windows NT<sup>a</sup>

<sup>a</sup>Requires 2.1 GB hard drive, 32 MB DRAM



---

Xycom Automation, Inc.  
734-429-4971 • Fax: 734-429-1010  
<http://www.xycom.com>

Canada Sales: 905-607-3400  
Northern Europe Sales: +44-1604-790-767  
Southern Europe Sales: +39-011-770-53-11



© 1999-2000 Xycom Automation, Inc. Specifications may change without notice. Xycom Automation and OpenHMI are trademarks of Xycom Automation. Other brand or product names are the property of their respective owners.



## Artisan Technology Group is your source for quality new and certified-used/pre-owned equipment

- FAST SHIPPING AND DELIVERY
- TENS OF THOUSANDS OF IN-STOCK ITEMS
- EQUIPMENT DEMOS
- HUNDREDS OF MANUFACTURERS SUPPORTED
- LEASING/MONTHLY RENTALS
- ITAR CERTIFIED SECURE ASSET SOLUTIONS

### SERVICE CENTER REPAIRS

Experienced engineers and technicians on staff at our full-service, in-house repair center

### *InstraView*<sup>SM</sup> REMOTE INSPECTION

Remotely inspect equipment before purchasing with our interactive website at [www.instraview.com](http://www.instraview.com) ↗

### WE BUY USED EQUIPMENT

Sell your excess, underutilized, and idle used equipment. We also offer credit for buy-backs and trade-ins. [www.artisanng.com/WeBuyEquipment](http://www.artisanng.com/WeBuyEquipment) ↗

### LOOKING FOR MORE INFORMATION?

Visit us on the web at [www.artisanng.com](http://www.artisanng.com) ↗ for more information on price quotations, drivers, technical specifications, manuals, and documentation

**Contact us:** (888) 88-SOURCE | [sales@artisanng.com](mailto:sales@artisanng.com) | [www.artisanng.com](http://www.artisanng.com)