



Artisan Technology Group is your source for quality new and certified-used/pre-owned equipment

- FAST SHIPPING AND DELIVERY
- TENS OF THOUSANDS OF IN-STOCK ITEMS
- EQUIPMENT DEMOS
- HUNDREDS OF MANUFACTURERS SUPPORTED
- LEASING/MONTHLY RENTALS
- ITAR CERTIFIED SECURE ASSET SOLUTIONS

SERVICE CENTER REPAIRS

Experienced engineers and technicians on staff at our full-service, in-house repair center

*InstraView*SM REMOTE INSPECTION

Remotely inspect equipment before purchasing with our interactive website at www.instraview.com ↗

WE BUY USED EQUIPMENT

Sell your excess, underutilized, and idle used equipment. We also offer credit for buy-backs and trade-ins. www.artisanng.com/WeBuyEquipment ↗

LOOKING FOR MORE INFORMATION?

Visit us on the web at www.artisanng.com ↗ for more information on price quotations, drivers, technical specifications, manuals, and documentation

Contact us: (888) 88-SOURCE | sales@artisanng.com | www.artisanng.com

3500 Series Flat Panel Industrial PCs



Xycom Automation's open solutions connect to other automation standards with industrial PCs that are tough enough for plant floor use. (Our standard PC configurations meet the strict specifications for

FEATURES

- Preloaded with MS-DOS, Windows® 95, or Windows NT® operating system
- Optional 10/100 BaseT Ethernet port
- Three or six ISA/PCI expansion slots
- 10.4" to 15" flat panel color displays
- Reprogrammable keypad, analog resistive touchscreen, or both for operator input
- AMD™ AM5X86, Intel® Celeron® and Pentium® III processors (up to 700 MHz)
- Up to 256 MB DRAM
- CD-ROM and floppy drive options
- 6.4 GB hard drive
- Flash drive option
- Two USB ports (with Intel processor)
- Parallel, RS-232 and RS-485, PS/2 keyboard, and VGA ports
- IrDA-compatible infrared port
- NEMA 4/4X/12 front panel
- UL listed for hazardous locations: Class I, Division 2, Groups A, B, C, D; Class II, Division 2, Groups F and G

use in hazardous locations and Europe's CE mark.) Based on CPU boards designed specifically for industrial automation, these systems provide the capabilities required by demanding applications. With an installed base of 180,000 systems, our industrial PC products are successfully applied in manufacturing and continuous process environments.

Easy-to-Read, Sharp Displays

Bright TFT screens can display complex operations with clarity. We offer a wide range of displays from 10.4" VGA to 15" XGA displays for low-end

Higher Performance

Up to 700 MHz Pentium III processors available to drive the fastest and most demanding applications. An Ethernet option allows you to connect these units networks at startup with little effort.

Meets High Standards

To survive on the plant floor, our PCs meet NEMA 4/4X/12, FCC, UL, and European CE mark requirements. Xycom Automation also leads the industry in reliability, service, and support with an optional five year warranty unmatched in the industry.

Open Platform

With a preloaded Windows operating system, you can communicate with locally or Ethernet connected products and databases through Microsoft and other enabling technologies—including ActiveX, OPC, and standard DDE. Exchange plant floor data with office applications and see what's happening from the plant floor to corporate headquarters.

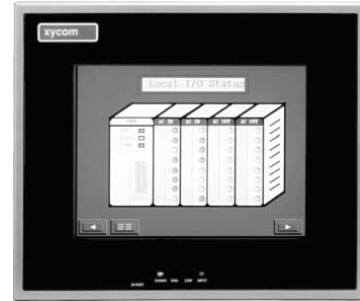
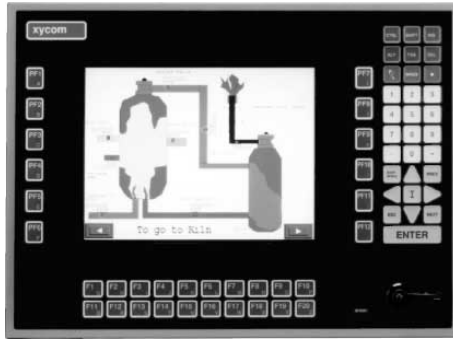
Fits Your Needs

You can configure and reconfigure Xycom Automation's industrial PCs for nearly any application through a wide variety of standard technologies. Our industrial PCs make it easy for end users and vendors to use cost-effective industry-standard components, storage options, ISA/PCI expansion, and programmable keypads for application specific requirements.

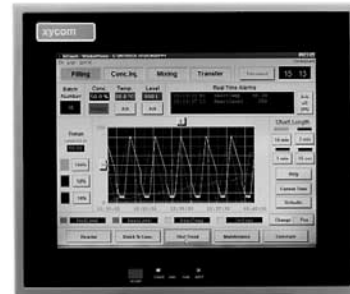
XYCOM
AUTOMATION
Open the Possibilities™

DS-350003(F)

PRODUCT CONFIGURATIONS



Model	3510KP(T)	3510T
Display	10.4" flat panel color display, 640 x 480 (VGA)	10.4" flat panel color display, 640 x 480 (VGA)
Operator Input	63-position keypad (touchscreen option)	Analog resistive touchscreen
Processor	Intel Celeron, Pentium III; AMD AM5x86	Intel Celeron, Pentium III; AMD AM5x86
Preloaded OS	MS-DOS, Windows NT or 95	MS-DOS, Windows NT or 95
Ethernet	Option	Option
Expansion	One ISA, one PCI, one shared	One ISA, one PCI, one shared



Model	3512KP(T)	3512T
Display	12.1" flat panel color display, 800 x 600 (SVGA)	12.1" flat panel color display, 800 x 600 (SVGA)
Operator Input	63-position keypad (touchscreen option)	Analog resistive touchscreen
Processor	Intel Celeron, Pentium III	Intel Celeron, Pentium III
Preloaded OS	MS-DOS, Windows NT or 95	MS-DOS, Windows NT or 95
Ethernet	Option	Option
Expansion	One ISA, one PCI, one shared	One ISA, one PCI, one shared



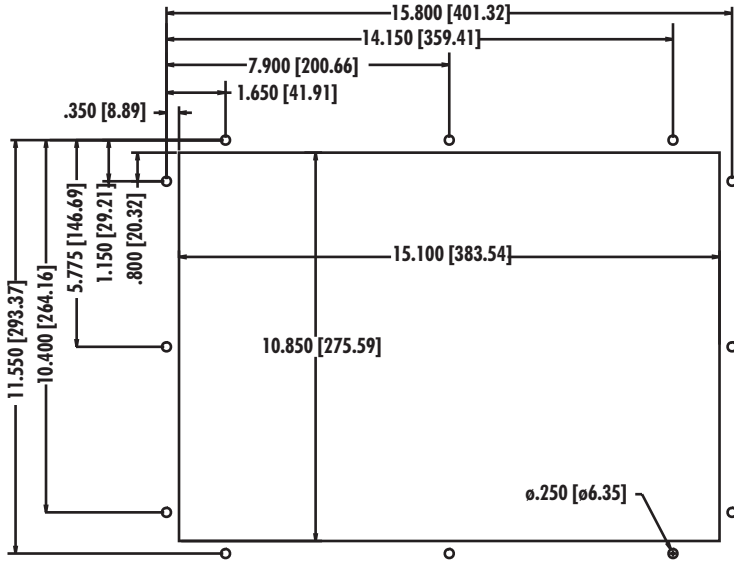
Model	3512KPM(T)	3515KPM(T)
Display	12.1" flat panel color display, 800 x 600 (SVGA)	15" flat panel color display, 1024 x 768 (XGA)
Operator Input	71-position keypad and industrial mouse (touchscreen option)	74-position keypad and industrial mouse (touchscreen option)
Processor	Intel Celeron, Pentium III	Intel Celeron, Pentium III
Preloaded OS	MS-DOS, Windows NT or 95	MS-DOS, Windows NT or 95
Ethernet	Option	Option
Expansion	Four ISA and two PCI or five ISA and one PCI slots	Four ISA and two PCI or five ISA and one PCI slots



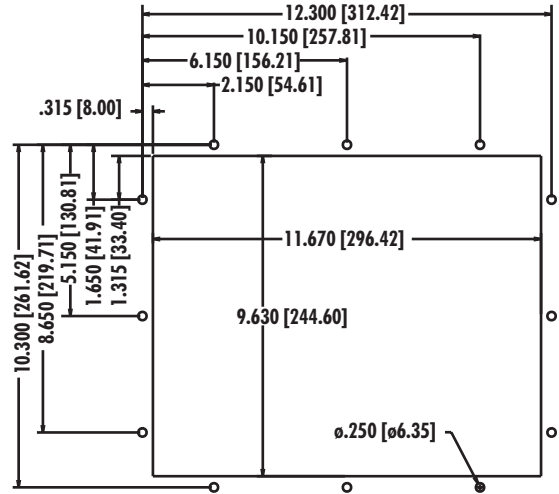
Model	3515T
Display	15" flat panel color display, 1024 x 768 (XGA)
Operator Input	Analog resistive touchscreen
Processor	Intel Celeron, Pentium III
Preloaded OS	MS-DOS, Windows NT or 95
Ethernet	Option
Expansion	Four ISA and two PCI or five ISA and one PCI slots

PRODUCT AND MOUNTING DIMENSIONS

3510KP(T) Mounting



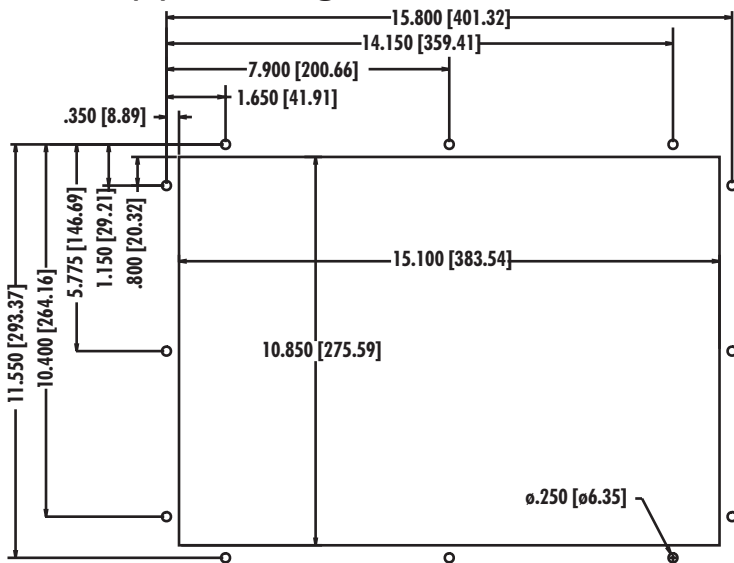
3510T Mounting



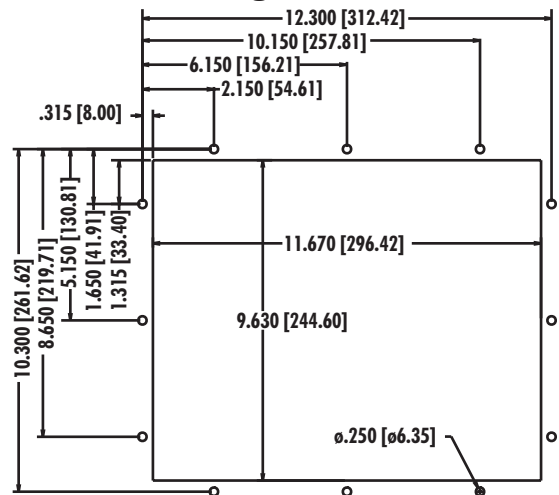
3510 Unit Dimensions

Model	3510KP(T)	3510T
Height	12.25" (311.5 mm)	11.00" (279.4 mm)
Width	16.50" (419.1 mm)	13.00" (330.2 mm)
Depth	6.65" (168.9 mm)	6.50" (165.1 mm)
Mounting Depth	5.65" (143.5 mm)	5.75" (146.0 mm)
Weight	16 lbs (7.2 kg)	16 lbs (7.2 kg)

3512KP(T) Mounting



3512T Mounting

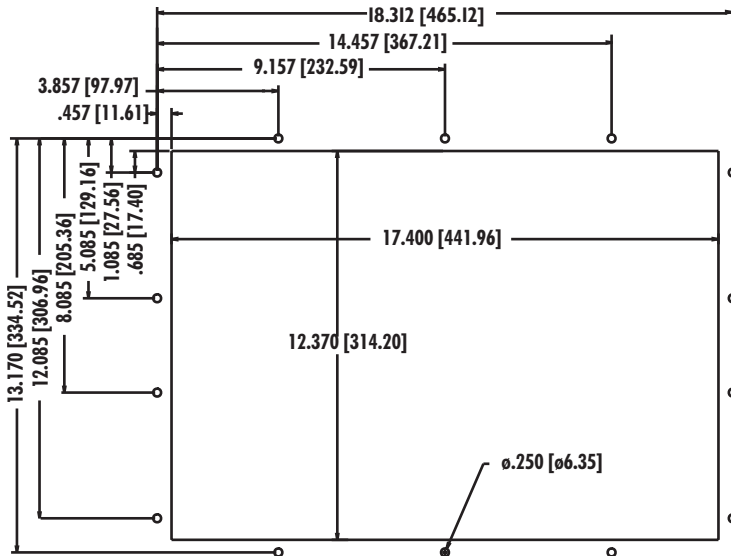


3512 Unit Dimensions

Model	3512KP(T)	3512T
Height	12.25" (311.5 mm)	11.00" (279.4 mm)
Width	16.50" (419.1 mm)	13.00" (330.2 mm)
Depth	6.65" (168.9 mm)	6.50" (165.1 mm)
Mounting Depth	5.65" (143.5 mm)	5.75" (146.0 mm)
Weight	16 lbs (7.2 kg)	16 lbs (7.2 kg)

***The 6-slot 3500 units can also be mounted in an EIA standard 19" rack.**

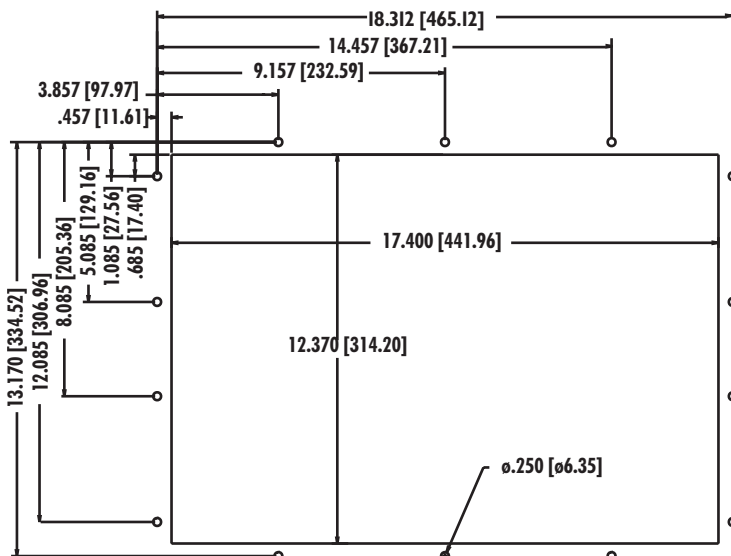
3512KPM(T), 3515KPM(T) Mounting*



3512KPM(T), 3515KPM(T) Unit Dimensions

Model	3512KPM(T), 3515KPM(T)
Height	14.20" (360.7 mm)
Width	19.00" (482.6 mm)
Depth	9.75" (247.7 mm)
Mounting Depth	9.00" (228.6 mm)
Weight	42 lbs (18.9 kg)

3515T Mounting*



3515 Unit Dimensions

Model	3515T
Height	14.20" (360.7 mm)
Width	19.00" (482.6 mm)
Depth	9.75" (247.7 mm)
Mounting Depth	9.00" (228.6 mm)
Weight	42 lbs (18.9 kg)

PRODUCT SPECIFICATIONS AND RATINGS

Environmental

	Operating	Nonoperating
Thermal	0C to 50C	-20C to 60C
Humidity	20% to 80% RH, noncondensing	20% to 80% RH, noncondensing
Shock^a	15g peak acceleration, 11 msec duration	30g peak acceleration, 11 msec duration
Vibration	.006" peak to peak displacement	.015" peak to peak displacement
5-2000 Hz^a	1.0g maximum acceleration	2.5g maximum acceleration
Altitude	Sea level to 10,000 ft.	Sea level to 40,000 ft.

^aThese values are with solid state hard drives and not rotating media drives.

Electrical

	Units with 3-slot backplane and AM5x86 processor	Units with 3-slot backplane and Intel processors	Units with 6-slot backplane
Power supply	80 Watt power	80 Watt power	200 Watt power
AC power	115 to 230V AC, autoranging, 50-60 Hz, 3.0A (maximum)	115 to 230V AC, autoranging, 50-60 Hz, 3.0A (maximum)	115 to 230V AC, autoranging, 50-60 Hz, 6.3A (maximum)
DC power (option)	20 to 36V DC, 24V nominal, 10A (maximum)	19 to 30V DC, 24V nominal, 16.0A (maximum)	19 to 30V DC, 24V nominal, 16.0A (maximum)
Available power^{bcd}	+5V@6.17A +12V@1.88A -12V@.71A	+5V@1.54A +12V@1.82A -12V@.72A	+5V@10.6A +12V@4.88A -5V@.76A -12V@.46A

^bTotal not to exceed 46 watts for units with 3-slot backplane and AM5x86 processor

^cTotal not to exceed 36 watts for units with 3-slot backplane and Intel processors

^dTotal not to exceed 100 watts for units with 6-slot backplane

Front Panel

- NEMA 4/4X/12 IP65

Regulatory Compliance

CE

- EN 55022: Class A
- EN 50082-2
- EN 60950

FCC

- 47 CFR, Part 15, Class A

Safety Agency Approvals

UL

- UL 1950
- UL 1604

CUL

- CSA-C22.2, #950
- CSA-C22.2, #213

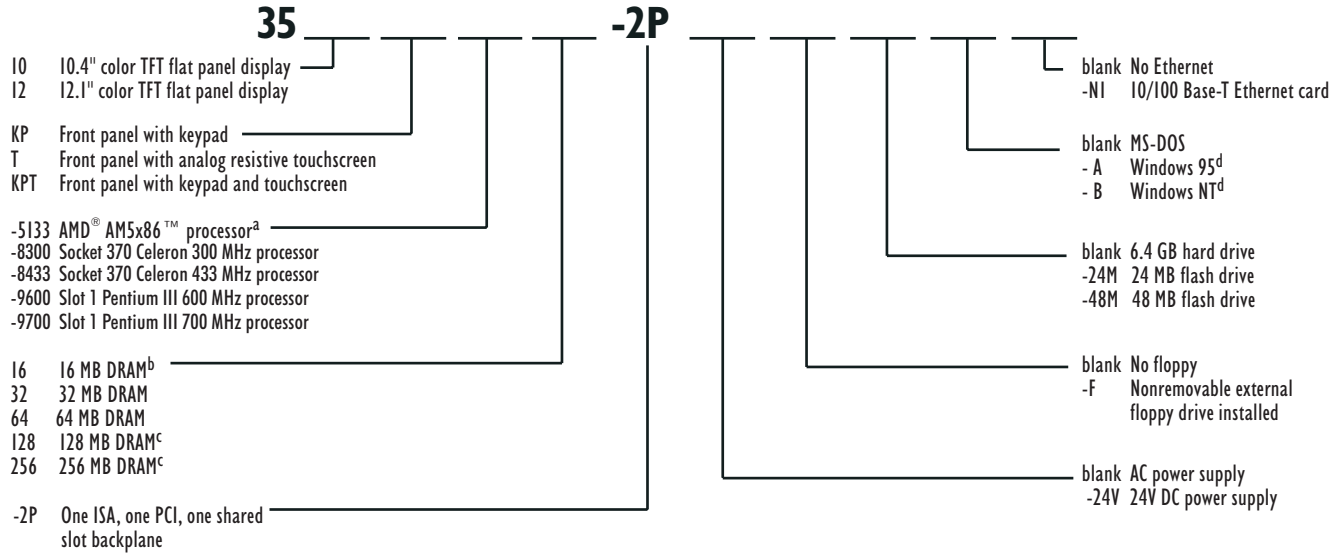
ORDERING INFORMATION

To create an order number, follow the conventions defined by the example order numbers and product configurations.

Example Order Number

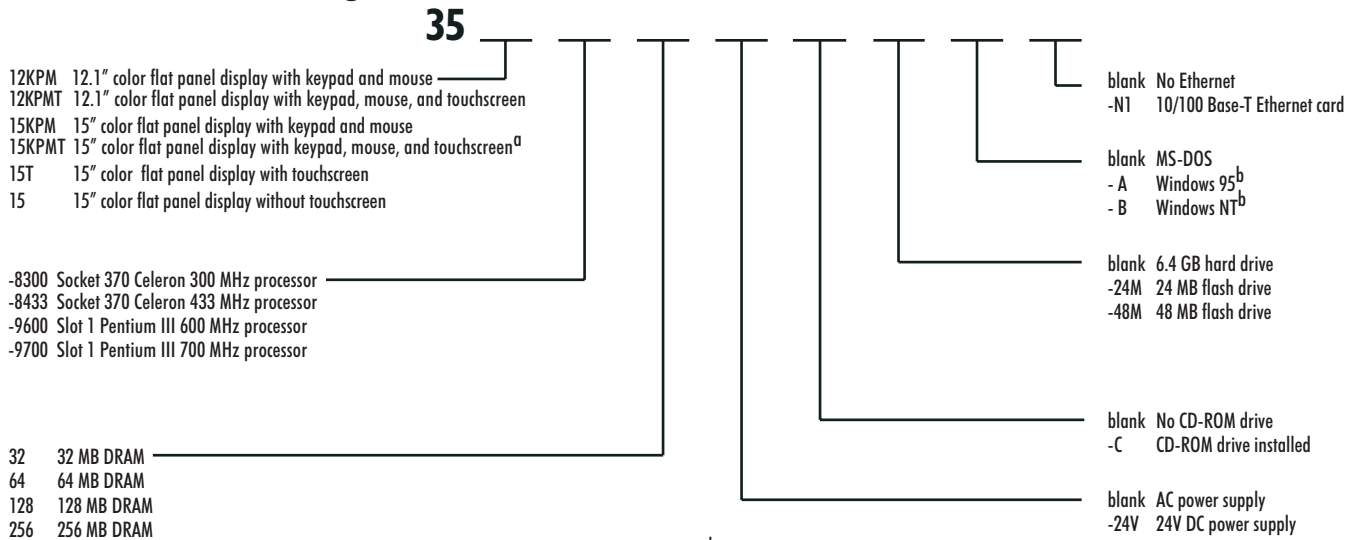
Order Number	Description
3512KPM-960064-B	3500 series industrial PC with 6-slot ISA/PCI backplane, 12.1" TFT color display, reprogrammable keypad, industrial mouse, 64 MB RAM, preloaded with Windows NT operating system

3-slot ISA/PCI Product Configurations



^a3510 only • ^bOnly with AM5x86 CPU • ^cNot with AM5x86 CPU • ^dRequires 6.4 GB hard drive, 32 MB DRAM

6-slot ISA/PCI Product Configurations



^aContact factory for availability • ^bRequires 6.4 GB hard drive

Xycom Automation, Inc.
734-429-4971 • Fax: 734-429-1010
<http://www.xycom.com>

Canada Sales: 905-607-3400
Northern Europe Sales: +44-1604-790-767
Southern Europe Sales: +39-011-770-53-11



© 1999-2000 Xycom Automation, Inc. Specifications may change without notice. Xycom Automation and OpenHMI are trademarks of Xycom Automation. Other brand or product names are the property of their respective owners.



Artisan Technology Group is your source for quality new and certified-used/pre-owned equipment

- FAST SHIPPING AND DELIVERY
- TENS OF THOUSANDS OF IN-STOCK ITEMS
- EQUIPMENT DEMOS
- HUNDREDS OF MANUFACTURERS SUPPORTED
- LEASING/MONTHLY RENTALS
- ITAR CERTIFIED SECURE ASSET SOLUTIONS

SERVICE CENTER REPAIRS

Experienced engineers and technicians on staff at our full-service, in-house repair center

*InstraView*SM REMOTE INSPECTION

Remotely inspect equipment before purchasing with our interactive website at www.instraview.com ↗

WE BUY USED EQUIPMENT

Sell your excess, underutilized, and idle used equipment. We also offer credit for buy-backs and trade-ins. www.artisanng.com/WeBuyEquipment ↗

LOOKING FOR MORE INFORMATION?

Visit us on the web at www.artisanng.com ↗ for more information on price quotations, drivers, technical specifications, manuals, and documentation

Contact us: (888) 88-SOURCE | sales@artisanng.com | www.artisanng.com