



Artisan Technology Group is your source for quality new and certified-used/pre-owned equipment

- FAST SHIPPING AND DELIVERY
- TENS OF THOUSANDS OF IN-STOCK ITEMS
- EQUIPMENT DEMOS
- HUNDREDS OF MANUFACTURERS SUPPORTED
- LEASING/MONTHLY RENTALS
- ITAR CERTIFIED SECURE ASSET SOLUTIONS

SERVICE CENTER REPAIRS

Experienced engineers and technicians on staff at our full-service, in-house repair center

*InstraView*SM REMOTE INSPECTION

Remotely inspect equipment before purchasing with our interactive website at www.instraview.com ↗

WE BUY USED EQUIPMENT

Sell your excess, underutilized, and idle used equipment. We also offer credit for buy-backs and trade-ins. www.artisanng.com/WeBuyEquipment ↗

LOOKING FOR MORE INFORMATION?

Visit us on the web at www.artisanng.com ↗ for more information on price quotations, drivers, technical specifications, manuals, and documentation

Contact us: (888) 88-SOURCE | sales@artisanng.com | www.artisanng.com



Product Information

The BenchMate Workstation automates sample preparation for instrument analysis. The BenchMate will make dilutions, filter, add reagents and internal standards, mix solutions, determine densities, and weigh samples. Manual sample cleanup techniques such as membrane filtration and solid phase extraction are easily automated using standard disposable filters and cartridges. Prepared samples can be automatically injected into HPLC systems, sent to UV/Vis spectrophotometers, or collected in the EasyFill Sample Collection Module.

Accessories

Consumables

Upgrades

Training and Support

Pharm and Biotech Applications

An internal balance monitors and verifies all transfers and additions by weight with four place accuracy. The data on each sample is automatically tracked by the system and stored on disk, creating an audit trail. The BenchMate can also use the balance to automatically determine the density of samples for more accurate, precise dilutions.

Zymark Main

Dilutions - Rapid dilutions with dilution factors ranging from 1:1.1, to 1:10,000 are easily achieved with the BenchMate. It's unique internal balance design minimizes reagent use and provides uncompromised precision and accuracy even for small volume dilutions. The BenchMate can add reagents in fixed amounts or in proportion to the amount of sample. Solutions of equivalent concentration can be automatically prepared from a series of samples of varying weights.

Filtration - Disposable 25mm filter units in a variety of membrane and filter types are automatically loaded into the filtration mechanism. Solutions are filtered according to user specified parameters for preconditioning, volume and flow rate.

Solid Phase Extraction - Manual SPE methods can be directly transferred to the BenchMate using standard, commercially available 1mL or 3mL syringe barrel SPE columns. The BenchMate provides complete control over the SPE method by allowing the user to

Eliminate time consuming manual sample preparation by automating pipetting, dilution, filtration, mixing, and other tasks. Analysts will have more time to spend on methods development, data interpretation and reporting.

Increase sample throughput by using BenchMate Workstation for extended hours of unattended operation. Sample backlog can be eliminated even during peak workload periods.

Reduce labor costs by reducing the amount of analyst time required for sample preparation. Unattended operation allows you to run a second shift without increasing your staff's work hours.

Save money by reducing the amount of solvent used and the cost of its disposal.

Make your lab a safer place to work by minimizing contact with unknown samples or hazardous reagents. The possibility of spills, leaks, breakage, or other accidents and mistakes is reduced when you use the BenchMate Workstation.

Improve overall assay precision through unmatched sample preparation accuracy and reproducibility. The BenchMate's internal analytical balance and precisely controlled liquid management system assure high quality results.

Document what is done using the complete audit trail generated for every step in the sample preparation process. Data is stored for display on a computer or may be printed.

choose adjustable flow rates for the conditioning, loading, rinsing, and elution steps.

HPLC Auto-Injection - The BenchMate Workstation interfaces to all standard HPLC systems. Prepared samples are automatically injected into the HPLC through a reliable, fixed-loop injector. In addition, the BenchMate can provide an automated procedure for external standard calibration. Up to six external standards may be injected at predetermined intervals (between 1 and 99 samples). The number of injections per standard may be specified using the LC Calibration Menu Screen. The LC calibration function allows maximum flexibility in designing injection patterns for use with chromatography data systems and system suitability software.

UV/Vis Autosampling - The BenchMate is compatible with either an HP 8452A Diode Array Spectrophotometer or single wavelength spectrophotometers with analog outputs. Prepared samples are automatically loaded into a flowthrough cuvette for UV/Vis analysis. Calibrations and reference or blank readings can be obtained at pre-set intervals to compensate for drift.



Product Information

Accessories

Accessories

Zymark offers the following BenchMate Workstation accessories.

Consumables

Sample Storage | Racks | Sample Identification | PC

Upgrades

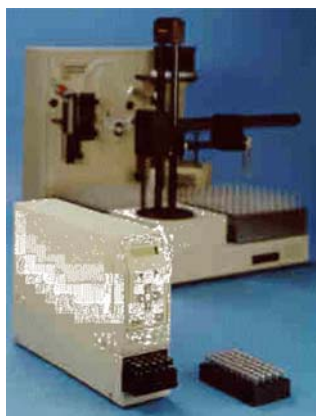
Communication | Balance | SPE | UV/Vis | Documentation | Miscellaneous Accessories

Training and Support

Pharm and Biotech Applications

EasyFill Sample Collection Module

Zymark Main

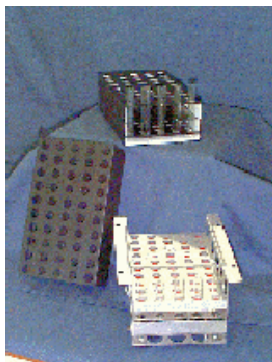


The EasyFill Sample Collection Module automatically collects processed sample from the BenchMate and stores them in septum-capped vials or deep-well microplates. As samples are prepared on the BenchMate, they are automatically transferred to the EasyFill Module. A side port (non-coring) needle with a separate vent needle pierces the septa of the vial and transfers the desired amount of sample into the vial.

Description	Part Number
EasyFill Sample Collection Module with Needle Wash - includes one rack - requires software version 3.1 (select size and part number below)	48106
EasyFill Rack for 1 mL WISP™ vials	50140
EasyFill Rack for 4 mL WISP™ vials	48403
EasyFill Rack for 11 mm vials	48404

EasyFill Rack for 96 position deep-well microplate	48405
EasyFill Rack for 96 position micro-tube microplate	49083

BenchMate Racks



Description	Part Number
Rack, 16 x 100 Test Tube, 50 position	43444
Additional BenchMate rack for 50 samples	
BenchMate/TurboVap LV Rack	44283
Rack allowing 16 x 100 mm test tubes to be moved from the BenchMate to the TurboVap LV. Test Tubes are locked in place in the LV and allowed to fall free in the BenchMate by a sliding bar.	
Temperature Controllable Rack (100 positions)	43505
Insulated racks to be used in Rack position 1 and 2 or 3 and 4 of the BenchMate. Temperature is controlled by a circulating water bath (not included). A temperature probe reads and sends the temperature to the BenchMate Worksheet. Temperature range is 4 - 40 °C.	
Temperature Controllable Rack (additional 100 positions)	44514
A second temperature control accessory to be used with the 43505 allowing all four BenchMate rack positions to be temperature controlled. Temperature is read and recorded in the BenchMate Worksheet by the first Temperature Control Accessory. A high capacity circulating water bath is necessary if both accessories are to be controlled from one bath.	

Cap Plugs for Temp. Control Rack (100 ea)	46214
to cover unused positions	

Sample Identification



Description	Part Number
Bar Code Reader and External Balance Interface	47179
A bar code wand reader and PC interface allowing bar code information to be directly read into the BenchMate Worksheet. Also includes a port for connecting an external balance allowing weights to be directly read into the BenchMate Worksheet.	

PC Communication

Description	Part Number
PC Access IBM PC/AT or true compatible	44928
BenchMate drive seen as add'l PC drive, allows disk access during operation	

Balance



Description	Part Number
-------------	-------------

Balance Calibration Weight	44320
A custom-shaped 50 g weight (16 x 100mm) allowing automatic calibration of the BenchMate balance. The weight is a NIST (National Institute of Standards and Technology) Class S1 weight optimized for use in the BenchMate.	

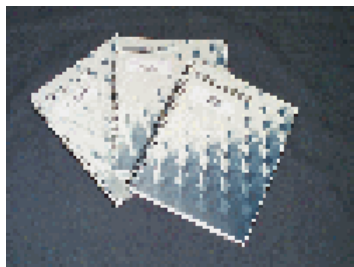
SPE

Description	Part Number
Adapter for 1 mL SPE Columns	44223
An adapter to the BenchMate 3 mL SPE option allowing use of 1 mL SPE Columns.	
Sleeves, 1 mL SPE, (50 ea)	44576
SPE column sleeves which allow 1 mL columns to be held in place on BenchMate test tube caps and placed into the 1 mL SPE column adapter (44223).	
Sleeves, 1 mL SPE (5 ea)	44575
Allows 1 mL columns to be held on cap & placed in 1 mL column adapter (44223).	
Adapter, 3 mL Immunoaffinity Gel SPE Column	45896
Plunger adapter for 3 mL Gel SPE columns	
Adapter, 1 mL Immunoaffinity Gel SPE Column	45894
Plunger adapter for 1 ml Gel SPE columns	
Adapter, 1 mL Immunoaffinity Column O-Rings (Qty. 2)	45895
Replacement O-Rings for 45894	

UV/Vis

Description	Part Number
Milton Roy 601 Spectrophotometer	41338
PCB Analog Interface for Milton Roy 601 to BM	46394

Documentation



Description	Part Number
Operator's Manual, BenchMate I	45810
BenchMate II Getting Started Guide	46901
BenchMate II Operator's Guide	46902
BenchMate II Service Guide	46903
BenchMate II, Slipcase box for guides	46900
Addendum to BenchMate II Document set for Acid Compatible Workstations	48454
EasyFill Menu - Reference Card	49038

Miscellaneous Accessories

Description	Part Number
Vortex Adapter Kit <i>for using polypro. tubes</i>	48378
Uninterruptible Power Supply	46984
1 Liter Polyethylene Bottle	44272

©Zymark Corporation
 Last revised: April 22, 1999

For more information contact: pharm@zymark.com



Product Information

Consumables

Accessories

Zymark offers the following BenchMate Workstation consumables.

Consumables

Upgrades

Training and Support

Pharm and Biotech Applications

Zymark Main

Description - Available from Zymark	Quantity	Part Number
16 x 100 mm uncapped Test Tubes	1000/case	40708
20 x 150 mm uncapped Test Tubes	500/case	40709
16 x 100 mm Sunscreen Test Tubes	1000/case	49213
16 x 100 mm Polystyrene Test Tubes	1000/case	49211
16 x 100 mm Polypropylene Test Tubes	1000/case	49328
16 x 100 mm Polypropylene Test Tubes	100 ea.	48998
16 x 100 mm Test Tube Caps	100 ea.	43506
11 mm GC Vials	144 ea.	40706
Caps, 11 mm GC Vials	1000/case	40718
GPC Cleanup Caps	100 ea.	46200
Black Caps for Polypropylene or Polystyrene tubes	100 ea.	48890
Suggested Filters: Zymark/Millipore Automation Certified Filters - Available from your nearest Millipore Representative		

©Zymark Corporation
Last revised: April 22, 1999

For more information contact: pharm@zymark.com



Artisan Technology Group is your source for quality new and certified-used/pre-owned equipment

- FAST SHIPPING AND DELIVERY
- TENS OF THOUSANDS OF IN-STOCK ITEMS
- EQUIPMENT DEMOS
- HUNDREDS OF MANUFACTURERS SUPPORTED
- LEASING/MONTHLY RENTALS
- ITAR CERTIFIED SECURE ASSET SOLUTIONS

SERVICE CENTER REPAIRS

Experienced engineers and technicians on staff at our full-service, in-house repair center

*InstraView*SM REMOTE INSPECTION

Remotely inspect equipment before purchasing with our interactive website at www.instraview.com ↗

WE BUY USED EQUIPMENT

Sell your excess, underutilized, and idle used equipment. We also offer credit for buy-backs and trade-ins. www.artisanng.com/WeBuyEquipment ↗

LOOKING FOR MORE INFORMATION?

Visit us on the web at www.artisanng.com ↗ for more information on price quotations, drivers, technical specifications, manuals, and documentation

Contact us: (888) 88-SOURCE | sales@artisanng.com | www.artisanng.com